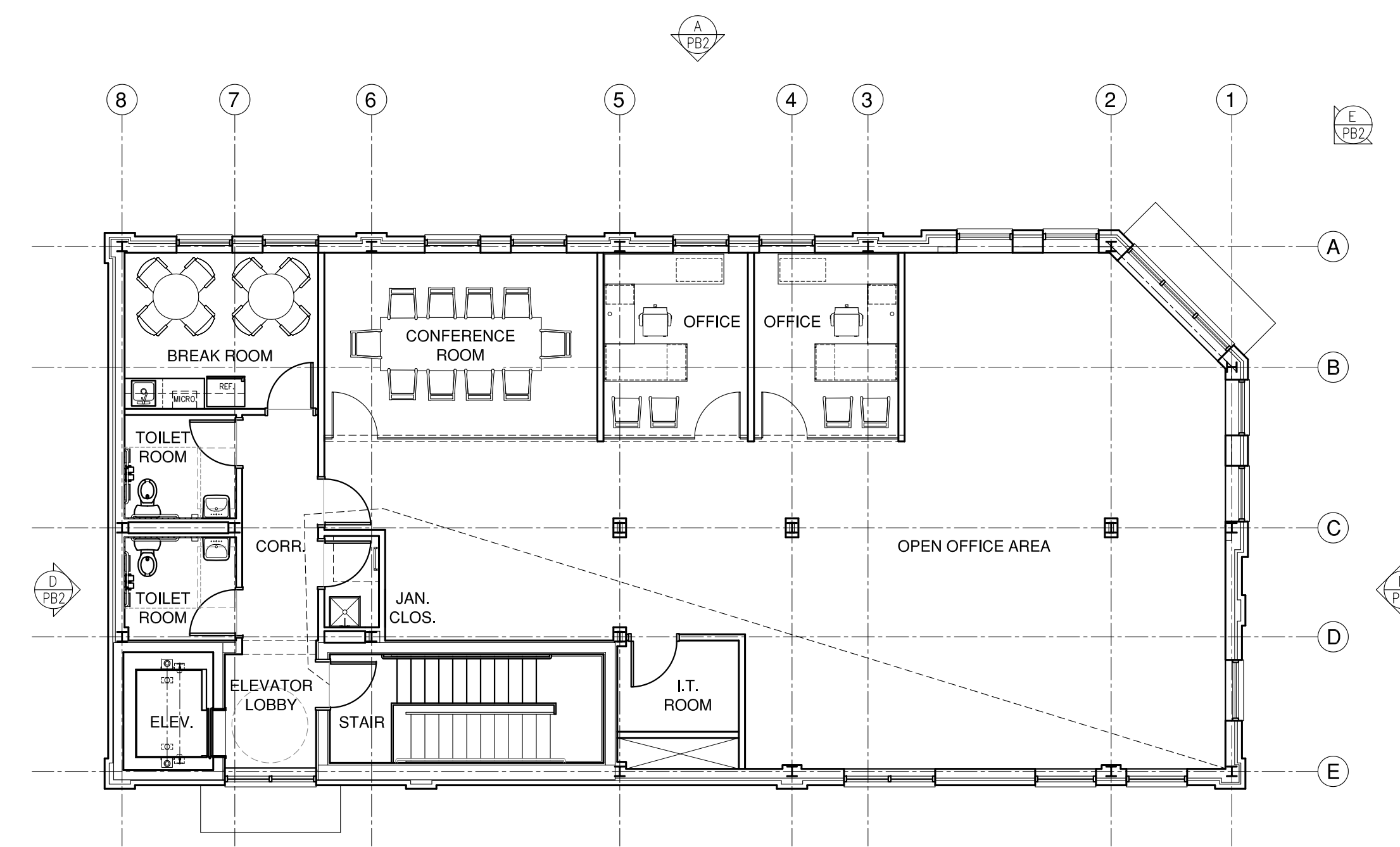


FIRST FLOOR PLAN - PARTIAL SITE PLAN
SCALE: 1/8"=1'-0"



SECOND FLOOR PLAN
SCALE: 1/8"=1'-0"

REVISION	DATE	DESCRIPTION	BY

MANASQUAN BANK <small>est. 1874</small> NEW BRANCH BANK BUILDING 429 MAIN STREET METUCHEN, NEW JERSEY	LONGO ARCHITECTS & ASSOCIATES LLC <small>0600354910</small> WILLIAM R. RYAN JR. AIA A1-09943 VINCENT F. WOLK AIA A1-11675	38 SOUTH STREET NEW PROVIDENCE, N.J. 07974 TELEPHONE (908) 464-8900 FAX (908) 464-3123	
			FIRST FLOOR PLAN / PARTIAL SITE PLAN AND SECOND FLOOR PLAN
ARCHITECT <i>Vincent F. Wolk</i>	DRAWN BY MCB	CHECKED BY VFW	PB-1
CERTIFICATE NUMBER AI-11675	PROJECT NUMBER 18108	DATE 2/24/21	