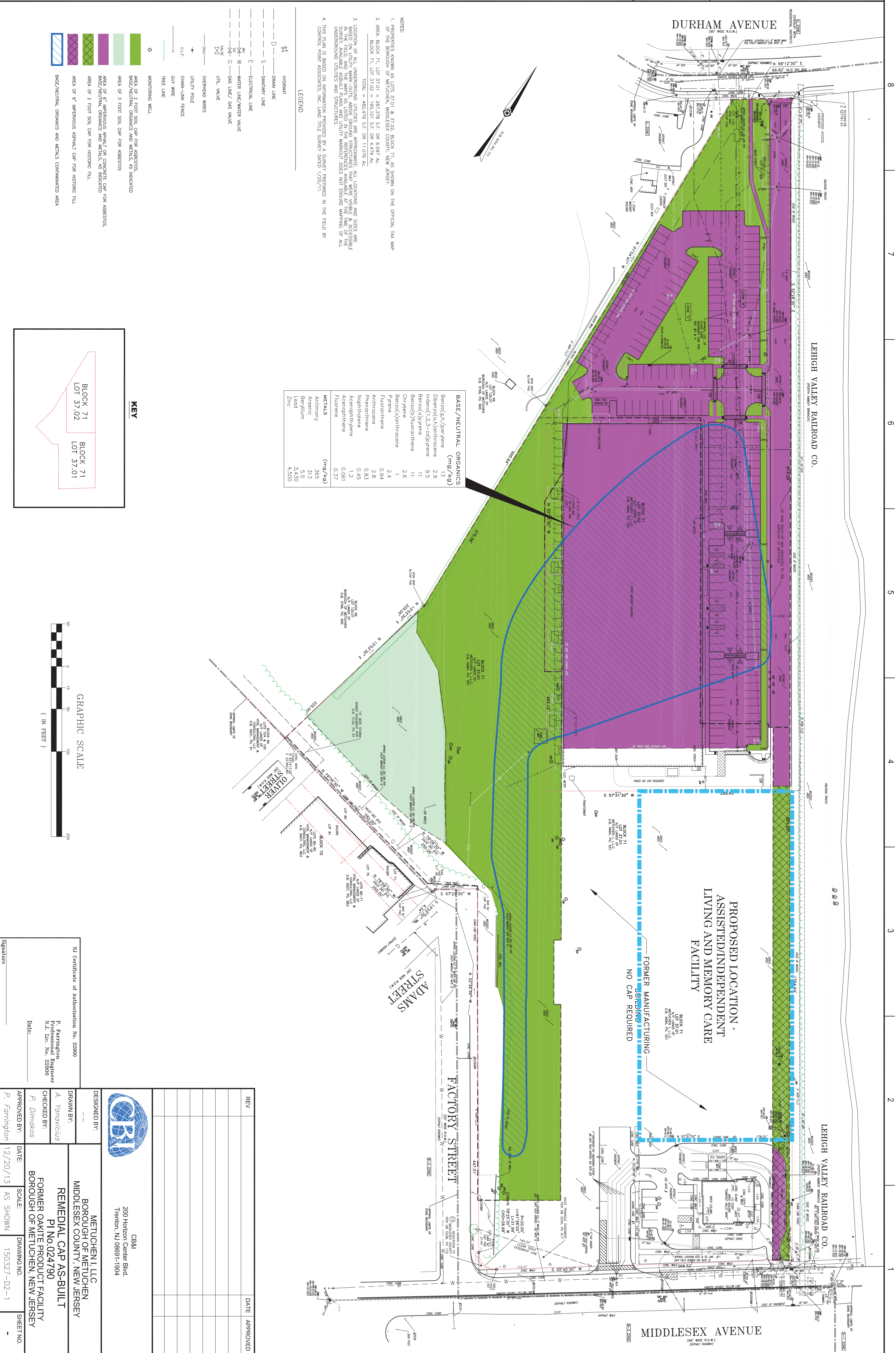


ATTACHMENT B

Xref: .
Image: WMAP



- NOTES:
1. PROPERTIES KNOWN AS LOTS 37.01 & 37.02, BLOCK 71, AS SHOWN ON THE OFFICIAL TAX MAP.
 2. AREA, BLOCK 71, LOT 37.01 = 387,178 S.F. OR 8,807 AC.
 3. AREA, BLOCK 71, LOT 37.02 = 195,101 S.F. OR 4,479 AC.
 4. TOTAL = 482,279 S.F. OR 11,076 AC.
3. LOCATION OF ALL UNDERGROUND UTILITIES ARE APPROXIMATE. ALL LOCATIONS AND SIZES ARE BASED ON UTILITY MARK-OFFS, ABOVE-GROUND STRUCTURES THAT WERE VISIBLE & ACCESSIBLE SURFACE AVAILABLE ASBESTOS PLANS AND UTILITY MARK-OFF DOES NOT ENSURE MAPPING OF ALL UNDERGROUND UTILITIES AND STRUCTURES.
4. THIS PLAN IS BASED ON INFORMATION PROVIDED BY A SURVEY PREPARED IN THE FIELD BY CONTROL POINT ASSOCIATES, INC. LAND TITLE SURVEY DATED 1/25/11.

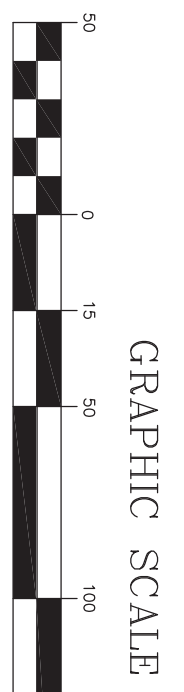
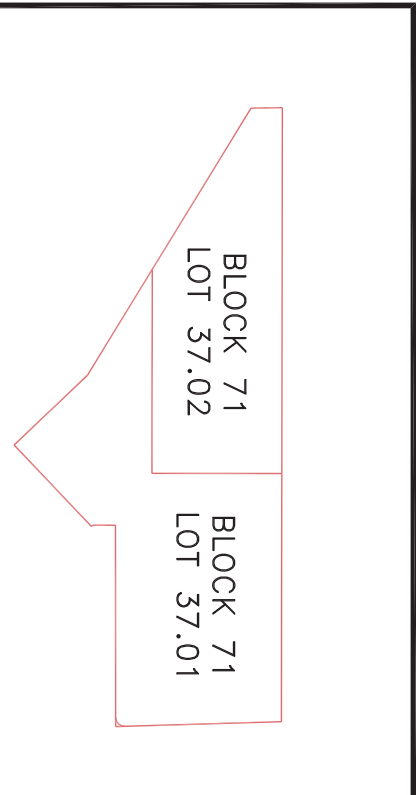
BASE/NEUTRAL ORGANICS (mg/kg)

Benz(a,h)perylene	1.3
Dibenz(a,h)anthracene	2.9
Indeno(1,2,3-cd)pyrene	9.5
Benzo(a)pyrene	11
Benzo(b)fluoranthene	11
Chrysene	2.6
Benzo(k)fluoranthene	1
Pyrene	2.4
Fluoranthene	0.94
Anthracene	2.8
Naphthalene	0.83
Acenaphthylene	1.2
Acenaphthene	0.061
Fluorene	0.37

METALS (mg/kg)

Antimony	365
Arsenic	313
Beryllium	5.5
Lead	3,430
Zinc	4,300

- LEGEND**
- INHOUSANT
 - DOWN LINE
 - SAWTOOTH LINE
 - ELECTRICAL LINE
 - WATER LINE/WATER VALVE
 - GAS LINE / GAS VALVE
 - UTIL. VALVE
 - OVERHEAD WIRES
 - UTILITY POLE
 - CHAIN-LINK FENCE
 - GYR WIRE
 - TRAIL LINE
 - MONITORING WELL
 - AREA OF 2 FOOT SOIL CAP FOR ASBESTOS
 - BASE/NEUTRAL ORGANICS AND METALS, AS INDICATED
 - AREA OF 3 FOOT SOIL CAP FOR ASBESTOS
 - AREA OF 6" IMPERVIOUS ASPHALT OR CONCRETE CAP FOR ASBESTOS
 - AREA OF 2 FOOT SOIL CAP FOR HISTORIC FILL
 - AREA OF 6" IMPERVIOUS ASPHALT CAP FOR HISTORIC FILL
 - BASE/NEUTRAL ORGANICS AND METALS CONTAMINATED AREA



NI Certificate of Authorization No. 22900
P. Ruzicki
Professional Engineer
N.J. Lic. No. 22900
Date: _____

DESIGNED BY:	—
DRAWN BY:	A. Yonovicius
CHECKED BY:	P. Dimakos
APPROVED BY:	P. Farnington
DATE:	12/20/13
SCALE:	AS SHOWN
DRAWING NO.:	150327-D2-1
SHEET NO.:	—

CBRI
200 Horizon Center Blvd.
Trenton, NJ 08691-1904

METCHEN I, LLC
BOROUGH OF METCHEN
MIDDLESEX COUNTY, NEW JERSEY

REMEDIAL CAP AS-BUILT
PI No. 024790
FORMER OKAKITE PRODUCT FACILITY
BOROUGH OF METCHEN, NEW JERSEY