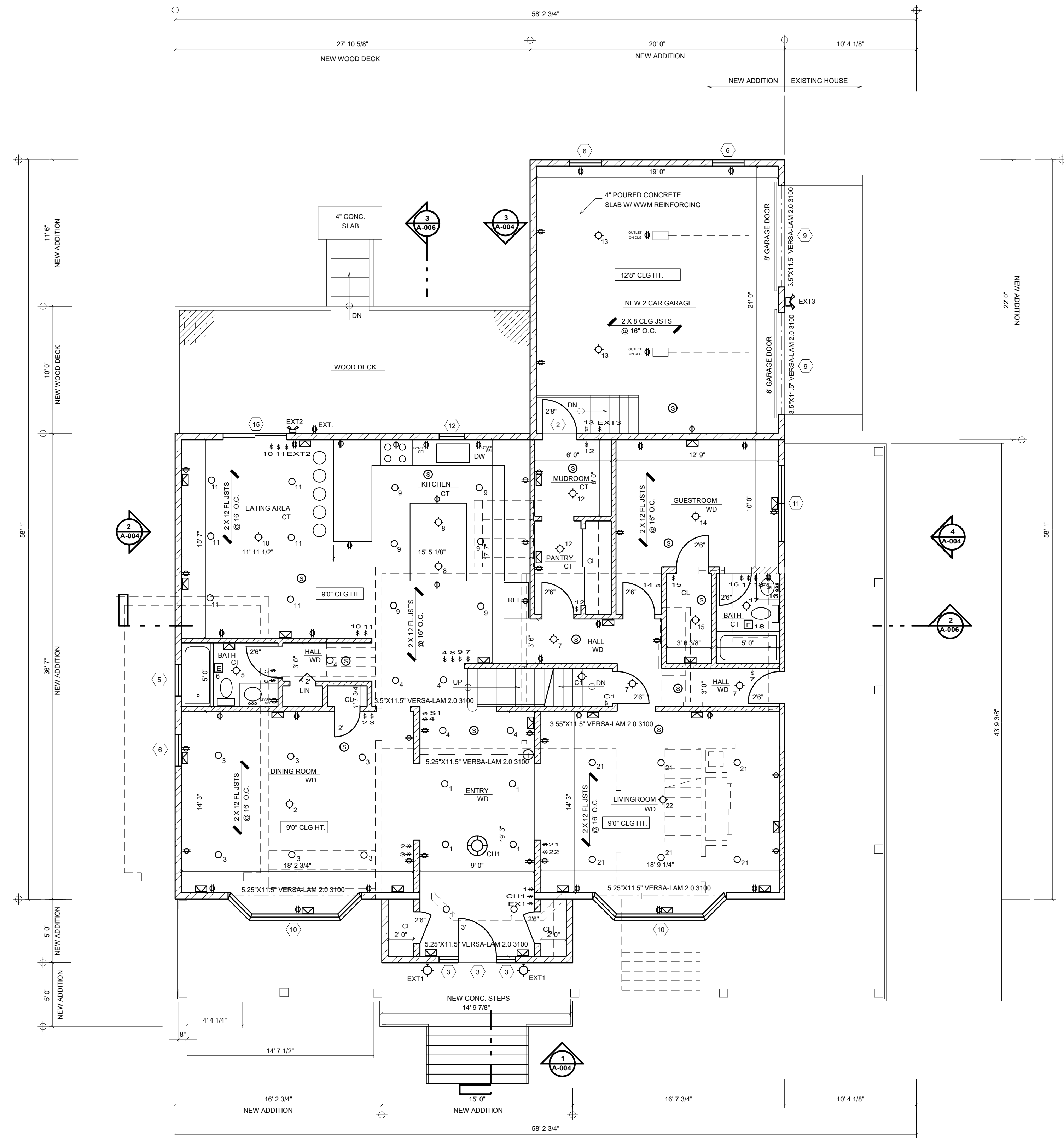


1 CELLAR FLOOR PLAN
SCALE: 3/16" = 1'-0"



2 FIRST FLOOR PLAN
SCALE: 3/16" = 1'-0"

SYMBOL LEGEND

	SURFACE MOUNTED LIGHT FIXTURE MAX 100W BULBS		EXTERIOR LIGHT FIXTURE (2) MAX 100W BULBS
	RECESSED MOUNTED LIGHT FIXTURE MAX 100W BULBS		WALL JACK, FOR TELEPHONE, DATA, CABLE, SEE LETTER THERMOSTAT CONTROL
	CEILING HUNG LIGHT FIXTURE MAX 100W BULBS		RECESSED EXHAUST FAN MINIMUM 80 CFM
	SURFACE MOUNTED INCANDESCENT VANITY LIGHT FIXTURE (3) MAXIMUM 100W BULBS		DOOR BELL
	ELECTRICAL WALL OUTLET, GFI IF INDICATED		FLUSH MOUNTED RETURN AIR VENT
	ELECTRICAL WALL SWITCH, NUMBER INDICATES DEVICE		FLUSH MOUNTED SUPPLY AIR DIFFUSER
	SMOKE AND CARBON MONOXIDE DETECTOR HARD WIRED		

WALL LEGEND

	POURED CONCRETE WALL		2 X 4 WOOD STUD WALL @ 16" O.C. W/ 5/8" FIRE RESISTIVE GYPSUM BD. ON EACH SIDE AND 3 1/2" BATT INSULATION 1 HR RATED WALL. GA WP3605, UL U305, ULC W301
	2 X 4 WOOD STUD WALL @ 16" O.C. W/ 1/2" GYPSUM BD. ON EACH SIDE.		2 X 4 WOOD STUD WALL @ 16" O.C. W/ 1/2" WATER RESISTIVE BD. ON WET SIDE AND 1/2" GYPSUM BD. ON DRY SIDE.
	2 X 4 WOOD STUD WALL SPACED @ 16" O.C. W/ 5/8" GYP BD. ON INT. AND 5/8" CDX PLY ON EXT. WITH 1/2" RIGID INSULATION BOARD AND 3 1/2" BATT MIN. INSULATION AND VAPOR BARRIER ON INT. SIDE 1 HR RATED WALL WP3605, OR UL #R1319-4		EXISTING WALL
	WALL TO BE REMOVED		

CONSTRUCTION NOTES:

1. REMOVE EXISTING FOUNDATION AND WALLS ON HOUSE FOR NEW ADDITIONS.
2. REMOVE EXISTING WALL PARTITIONS AS SHOWN ON FLOOR PLAN.
3. INSTALL NEW WINDOWS AND HEADERS AS REQUIRED
4. INSTALL NEW PLUMBING FIXTURES AND REMOVE AND REPLACE EXISTING FIXTURES AS SHOWN.
5. MODIFY HVAC SYSTEM THROUGHOUT HOUSE
6. INSTALL NEW SMOKE AND CARBON MONOXIDE DETECTORS.

JOHN RIGGIO, RA ARCHITECT

172 MAIN STREET, SUITE 33 METUCHEN, NJ 08840 TEL/FAX: (732) 902-2882		PROJECT NO. 202167
DRAWN BY J.R., D.N.		SCALE 3/16"=1'-0"
DATE 9-27-2022		DRAWING A-001.00
DRAWING 2 OF 7		