

# Borough of Metuchen Emergency Services Center



**Richard B. Schommer, Jr., PE, PP & Meghan Burnham, RA**

*H2M architects + engineers  
March 21 2024*

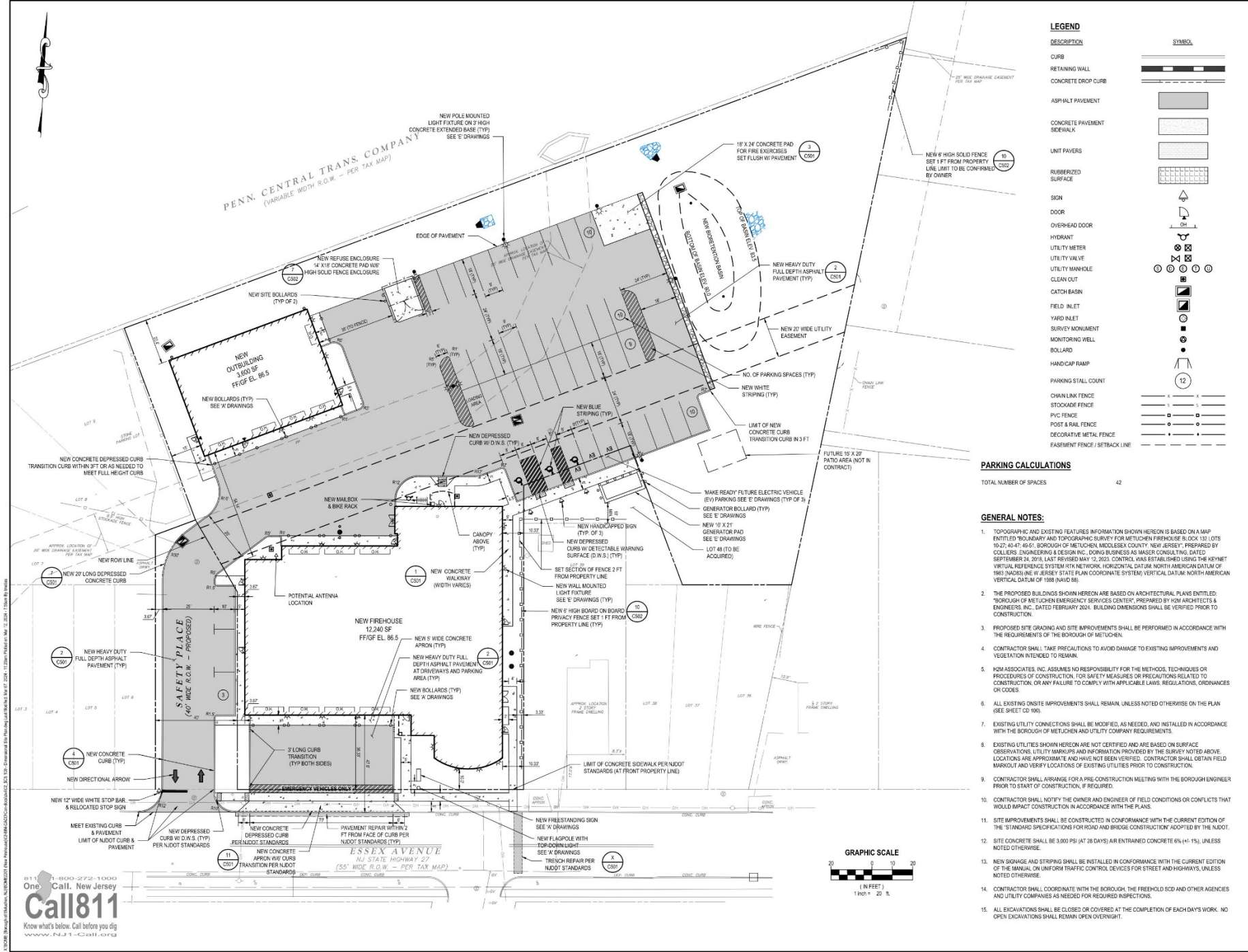


# Existing / Proposed Site

1 Safety Place, Metuchen, NJ







**LEGEND**

DESCRIPTION	SYMBOL
CURB	[Symbol]
RETAINING WALL	[Symbol]
CONCRETE DROP CURB	[Symbol]
ASPHALT PAVEMENT	[Symbol]
CONCRETE PAVEMENT SIDEWALK	[Symbol]
UNIT PAVERS	[Symbol]
RUBBERIZED SURFACE	[Symbol]
SIGN	[Symbol]
DOOR	[Symbol]
OVER-HEAD DOOR	[Symbol]
FYDANT	[Symbol]
UTILITY METER	[Symbol]
UTILITY VALVE	[Symbol]
UTILITY MANHOLE	[Symbol]
CLEAN OUT	[Symbol]
CATCH BASIN	[Symbol]
FIELD INLET	[Symbol]
YARD INLET	[Symbol]
SURVEY MONUMENT	[Symbol]
MONITORING WELL	[Symbol]
BOLLARD	[Symbol]
HANDICAP RAMP	[Symbol]
PARKING STALL COUNT	[Symbol]
CHAIN LINK FENCE	[Symbol]
STOCKADE FENCE	[Symbol]
PVC FENCE	[Symbol]
POST & RAIL FENCE	[Symbol]
DECORATIVE METAL FENCE	[Symbol]
EASEMENT FENCE / SETBACK LINE	[Symbol]

**PARKING CALCULATIONS**  
TOTAL NUMBER OF SPACES 42

- GENERAL NOTES:**
- TOPOGRAPHIC AND EXISTING FEATURES INFORMATION SHOWN HEREON IS BASED ON A MAP ENTITLED "BOUNDARY AND TOPOGRAPHIC SURVEY FOR METUCHEN FIREHOUSE & LOT 132 (LOTS 10-27, 40-47, 49-51, BOROUGH OF METUCHEN, MIDDLESEX COUNTY, NEW JERSEY), PREPARED BY COLLIER ENGINEERING & DESIGN INC. DOING BUSINESS AS MASS CONSULTING DATED SEPTEMBER 24, 2018. LAST REVISED MAY 12, 2023. CONTROL WAS ESTABLISHED USING THE KEYNET VIRTUAL REFERENCE SYSTEM RTK NETWORK. HORIZONTAL DATUM: NORTH AMERICAN DATUM OF 1983 (NAD83); VERTICAL DATUM: STATE PLANE COORDINATE SYSTEM; VERTICAL DATUM: NORTH AMERICAN VERTICAL DATUM OF 1988 (NAVD 88).
  - THE PROPOSED BUILDINGS SHOWN HEREON ARE BASED ON ARCHITECTURAL PLANS ENTITLED "BOROUGH OF METUCHEN EMERGENCY SERVICES CENTER", PREPARED BY H2M ARCHITECTS & ENGINEERS, INC. DATED FEBRUARY 2024. BUILDING DIMENSIONS SHALL BE VERIFIED PRIOR TO CONSTRUCTION.
  - PROPOSED SITE GRADING AND SITE IMPROVEMENTS SHALL BE PERFORMED IN ACCORDANCE WITH THE REQUIREMENTS OF THE BOROUGH OF METUCHEN.
  - CONTRACTOR SHALL TAKE PRECAUTIONS TO AVOID DAMAGE TO EXISTING IMPROVEMENTS AND VEGETATION INTENDED TO REMAIN.
  - H2M ASSOCIATES, INC. ASSUMES NO RESPONSIBILITY FOR THE METHODS, TECHNIQUES OR PROCEDURES OF CONSTRUCTION, FOR SAFETY MEASURES OR PRECAUTIONS RELATED TO CONSTRUCTION, OR ANY FAILURE TO COMPLY WITH APPLICABLE LAWS, REGULATIONS, ORDINANCES OR CODES.
  - ALL EXISTING ON-SITE IMPROVEMENTS SHALL REMAIN, UNLESS NOTED OTHERWISE ON THE PLAN (SEE SHEET CD 100).
  - EXISTING UTILITY CONNECTIONS SHALL BE MODIFIED, AS NEEDED, AND INSTALLED IN ACCORDANCE WITH THE BOROUGH OF METUCHEN AND UTILITY COMPANY REQUIREMENTS.
  - EXISTING UTILITIES SHOWN HEREON ARE NOT CERTIFIED AND ARE BASED ON SURFACE OBSERVATIONS. UTILITY MARKUPS AND INFORMATION PROVIDED BY THE SURVEY NOTED ABOVE LOCATIONS ARE APPROXIMATE AND HAVE NOT BEEN VERIFIED. CONTRACTOR SHALL OBTAIN FIELD MARKOUT AND VERIFY LOCATIONS OF EXISTING UTILITIES PRIOR TO CONSTRUCTION.
  - CONTRACTOR SHALL ARRANGE FOR A PRE-CONSTRUCTION MEETING WITH THE BOROUGH ENGINEER PRIOR TO START OF CONSTRUCTION, IF REQUIRED.
  - CONTRACTOR SHALL NOTIFY THE OWNER AND ENGINEER OF FIELD CONDITIONS OR CONFLICTS THAT WOULD IMPACT CONSTRUCTION IN ACCORDANCE WITH THE PLANS.
  - SITE IMPROVEMENTS SHALL BE CONSTRUCTED IN CONFORMANCE WITH THE CURRENT EDITION OF THE "STANDARD SPECIFICATIONS FOR ROAD AND BRIDGE CONSTRUCTION" ADOPTED BY THE N.J.D.O.T.
  - SITE CONCRETE SHALL BE 3,000 PSI (AT 28 DAYS) AIR ENTRAINED CONCRETE 6% (+/- 1%), UNLESS NOTED OTHERWISE.
  - NEW SIGNAGE AND STRIPING SHALL BE INSTALLED IN CONFORMANCE WITH THE CURRENT EDITION OF THE MANUAL ON UNIFORM TRAFFIC CONTROL DEVICES FOR STREET AND HIGHWAYS, UNLESS NOTED OTHERWISE.
  - CONTRACTOR SHALL COORDINATE WITH THE BOROUGH, THE FREEHOLD SCD AND OTHER AGENCIES AND UTILITY COMPANIES AS NEEDED FOR REQUIRED INSPECTIONS.
  - ALL EXCAVATIONS SHALL BE CLOSED OR COVERED AT THE COMPLETION OF EACH DAY'S WORK. NO OPEN EXCAVATIONS SHALL REMAIN OPEN OVERNIGHT.



**H2M Architects & Engineers, Inc.**  
119 Cherry Hill Road, Suite 110  
Parlin, NJ 07654  
862.267.5900 • www.h2m.com  
NJ Architecture Certificate of Authorization No. 21A020102290  
NJ Engineering Certificate of Authorization No. 26A0202290

**REVISIONS:**

MARK	DATE	DESCRIPTION

**REVISIONS:**

MARK	DATE	DESCRIPTION

**REVISIONS:**

MARK	DATE	DESCRIPTION

**RICHARD B. SCHOMMER, JR. P.E.**  
Professional Engineer License No. 26A0202290  
NJ Professional Engineer License No. 21A020102290  
REGISTERED PROFESSIONAL ENGINEER IN MECHANICAL ENGINEERING  
DESIGNED BY: RBS  
CHECKED BY: TM  
PROJECT NO.: BOME2201  
DATE: MAR 12, 2024  
SCALE: AS SHOWN

**Borough of Metuchen**

**EMERGENCY SERVICES CENTER**



**1 SAFETY PLACE  
METUCHEN NJ 08840  
BOROUGH OF METUCHEN  
COUNTY OF MIDDLESEX  
NEW JERSEY**

**90% - NFC**

**DIMENSIONAL SITE PLAN**

**CS 100.00**

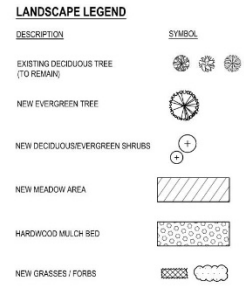
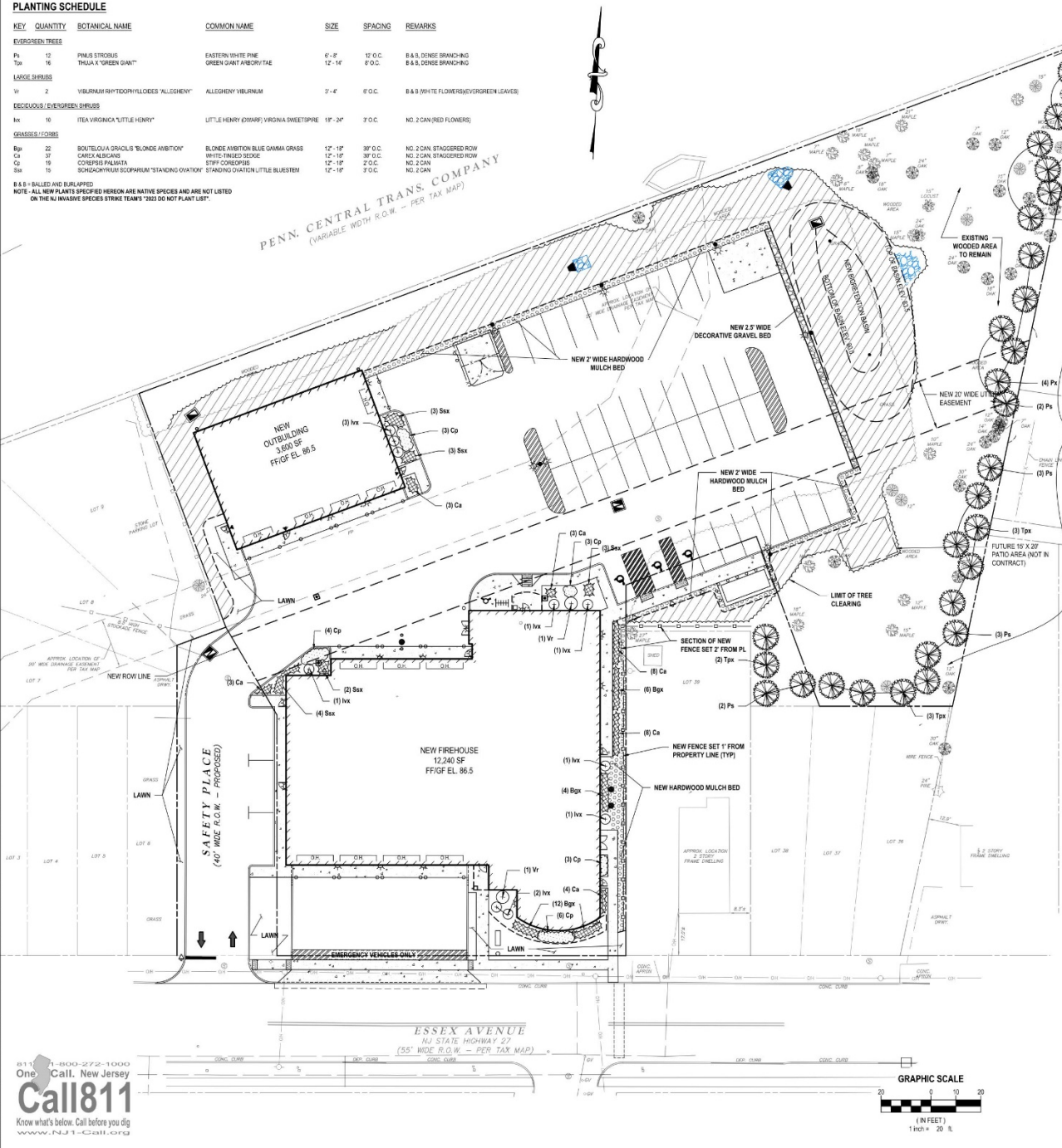


811 1-800-272-1000  
**Call811**  
Know what's below. Call before you dig  
www.NJ-Call811.com

PLANTING SCHEDULE						
KEY	QUANTITY	BOTANICAL NAME	COMMON NAME	SIZE	SPACING	REMARKS
<b>EVERGREEN TREES</b>						
Pt	13	PRINUS STRONGII	EASTERN WHITE PINE	6'-8"	17' O.C.	8 & 8, DENSE BRANCHING
Tp	16	THUJA X 'GREEN GIANT'	GREEN GIANT ARBORVITAE	12'-14'	8' O.C.	8 & 8, DENSE BRANCHING
<b>LARGE SHRUBS</b>						
Vt	2	VIBURNUM RHYTHYDIOIDES 'ALLEGHENY'	ALLEGHENY VIBURNUM	3'-4'	8' O.C.	8 & 8 (WHITE FLOWERS/VERGREEN LEAVES)
<b>DECIDUOUS/EVERGREEN SHRUBS</b>						
Nt	10	IREA VIRGINICA 'LITTLE HENRY'	LITTLE HENRY (ORNAMENTAL) VIRGINIA SWEETPIRE	18"-24"	7' O.C.	NO. 2 CAN BEAD FLOWERS
<b>GRASSES / FORBS</b>						
Bp	27	BOUTELOUA OBLONGA 'BLONDE AMBITION'	BLONDE AMBITION BLUE GRAMA GRASS	12"-18"	39" O.C.	NO. 2 CAN STAGGERED ROW
Cp	33	CAREX ALBICANS	WHITE-TIPPED SEDGE	12"-18"	39" O.C.	NO. 2 CAN STAGGERED ROW
Cs	15	COFFEOUS PALMATA	STIFF COCKSPUR	12"-18"	7' O.C.	NO. 2 CAN
Sb	15	SCHIZACHYRIUM SCOPARIUM 'STANDING OVATION'	STANDING OVATION LITTLE BUESTEN	12"-18"	7' O.C.	NO. 2 CAN

B & B - BALLED AND BURLAPPED  
 NOTE - ALL NEW PLANTS SPECIFIED HEREON ARE NATIVE SPECIES AND ARE NOT LISTED ON THE NJ INVASIVE SPECIES STRIKE TEAM'S "DO NOT PLANT LIST"

PENN. CENTRAL TRANS COMPANY  
 (VARIABLE WIDTH ROW - PER TAX MAP)



- ### LANDSCAPE NOTES
- ALL SUPPLIED AND INSTALLED PLANT MATERIAL SHALL BE NURSERY-GROWN STOCK IN ACCORDANCE WITH THE LATEST EDITION OF THE AMERICAN STANDARDS FOR NURSERY STOCK (ANSI Z60.1). PLANT MATERIAL SHALL BE OF THE APPROVED SPECIES AND GROWN UNDER THE SAME CLIMATIC CONDITIONS AS THE SUBJECT SITE. THEY SHALL BE OF PRIME QUALITY, FREE OF INSECTS, PESTS AND DISEASE. SUBSTITUTIONS MUST BE APPROVED IN WRITING BY THE OWNER.
  - CONFIRM THE LOCATION OF EXISTING SUBSURFACE UTILITIES WITH THE RESPECTIVE UTILITY COMPANIES AND COORDINATE WITH THE GRADING AND DRAINAGE PLAN OR UTILITY PLAN FOR THE LOCATION OF PROPOSED SUBSURFACE UTILITY LINES AND STRUCTURES PRIOR TO ANY EXCAVATION. NOTIFY THE LANDSCAPE ARCHITECT IF ANY CONFLICTS EXIST.
  - NOTIFY THE OWNER IMMEDIATELY AND PRIOR TO THE INSTALLATION OF ANY PLANT MATERIALS IF SUB-GRADE SOIL CONDITIONS ARE DETERMINED TO PLANT GROWTH OR WILL INHIBIT DRAINAGE.
  - IF ANY DISCREPANCY EXISTS BETWEEN THE PLANT COUNT SHOWN IN THE PLANTING SCHEDULE AND THE LANDSCAPE PLAN, THE PLAN SHALL TAKE PRECEDENCE.
  - UNLESS OTHERWISE APPROVED IN WRITING, INSTALL WEEDING DURING THE FOLLOWING PERIODS:
    - DECIDUOUS WOODY PLANTS: SEPTEMBER 15 TO MAY 15 OR WHENEVER TEMPERATURES ARE ABOVE 40 DEGREES F.
    - EVERGREENS: AUGUST 15 TO SEPTEMBER 31 OR DURING MARCH 15 AND MAY 31 BEFORE THE START OF NEW GROWTH.
    - SEEDING: APRIL 15 TO MAY 15 AND AUGUST 15 TO OCTOBER 15.
  - PLANTS SHALL BEAR THE SAME RELATIONSHIP TO FINISHED GRADE AS THEY BORE TO THE EXISTING GRADE IN THE NURSERY.
  - INSTALL A 1/2" LAYER OF SHREDED BARK MULCH IN ALL TREE PLANTING AREAS AND SHRUB BEDS EXCEPT WHERE OTHERWISE NOTED IN PLAN (WINDROW ZONE). DO NOT TRACK MULCH DIRECTLY AGAINST TRUNKS OF TREES. FORM AN EARTH COLLAR AROUND EACH PLANT OR SHRUB BED SO AS TO HOLD WATER AND MULCH. PROVIDE SUFFICIENT IRRIGATION FOR ALL PLANT MATERIALS TO MAINTAIN HEALTHY AND VIGOROUS CONDITION UNTIL THE PROJECT IS ACCEPTED BY THE OWNER.
  - REMOVE TREE STAMBS AND OTHER PLANTING QUOTE MATERIALS, IF SPECIFIED, AFTER ONE YEAR FROM THE DATE OF PLANTING.
  - ALL PLANT MATERIALS SHALL BE QUANTIFIED FOR A PERIOD OF ONE YEAR AFTER PLANTING FOLLOWING ACCEPTANCE BY THE OWNER. UPON COMPLETION OF THE ONE YEAR PLANT QUANTIFICATION PERIOD, SUPPLEMENTAL PLANT MATERIALS, EITHER DEAD OR DISEASED AS DETERMINED BY THE OWNER, REPLACE PLANT WITH THE SAME SPECIES AND SIZE IMMEDIATELY DURING THE CURRENT GROWING SEASON OR AT THE BEGINNING OF THE NEXT GROWING SEASON.
  - UPON COMPLETION OF PLANTING OPERATION CULTIVATE AND NEATLY FINISH ALL PLANTING AREAS.
  - RESTORE ALL DISTURBED LAWN AREAS AND ALL AREAS NOT SPECIFICALLY IDENTIFIED HEREIN FOR OTHER IMPROVEMENTS WITH 4 INCHES OF TOPSOIL AND SEED. PROVIDE SUFFICIENT MULCH AND IRRIGATION TO ESTABLISH AND MAINTAIN HEALTHY TURF GRASS OR LAWN UNTIL ACCEPTED BY THE OWNER.
  - THE MEADOW AREA AND BIODIVERSITY BASIN AREAS SHOWN HEREON SHALL BE COVERED WITH 4" MIN. THICK TOPSOIL LAYER AND PLANTED WITH NATIVE TREES AND SHRUBS IN ACCORDANCE WITH THIS PLAN. THE ENTIRE AREA SHALL BE SEEDED IN ACCORDANCE WITH THE SEEDING SCHEDULE FOR MEADOW AND BIODIVERSITY BASIN AREA. SEE SHEET 05.04 FOR DETAILS.
  - THE LOCATION OF THE NEW EVERGREEN TREES ALONG THE PROPERTY LINE ARE APPROXIMATELY SHOWN. CONTRACTOR SHALL LOCATE TREES WITHIN EXISTING CLEARING AREAS TO MINIMIZE DISTURBANCE OF EXISTING VEGETATION.

### Seeding Schedule For Biorotation Basin and New Meadow Areas

- #### SITE PREPARATION
- IDENTIFY EXISTING INVASIVE SHRUBS AND OTHER VEGETATION WITH APPROVED HERBICIDE.
  - PREPARE AREA: SURFACE SHALL BE REASONABLY COMPACTED AND STUNDED 2 INCHES OF LAMBER, REMOVE ALL DEBRIS, ROOTS, CLUMPS, OR OTHER UNDESIRABLE MATERIALS.
  - APPLY 4" TOPSOIL FREE OF ROCKS TO ALL DISTURBED AREAS.
  - APPLY 1/2" SEED MIXTURE BELOW AT A RATE OF TOTAL PLS 1 LB/AC ACRE OF NATIVE GRASS (COOL AND WARM SEASON) AND FORB COMBINATION TO DISTURBED AREAS.
  - SEED TO BE PROCASTED UNTO PREPARED SEEDBED. AREA TO BE PROCASTED WITH A GULLY WATER (WITH TRACES OF SODA) OR A MULCH (100 LB/AC) TO PROTECT THE SEED WITHIN FOLI COVERED SEEDBED. APPLY A LIGHT LAYER OF 2" SAND (20 LB/AC) MULCH (100 LB/AC) TO PROTECT THE SEED WITHIN FOLI COVERED SEEDBED.
  - CONTRACTOR SHALL BE RESPONSIBLE FOR MAINTAINING THE SITE. IN THE EVENT OF DROUGHT CONDITIONS DURING THE FIRST GROWING SEASON FOLLOWING PLANTING, IT IS THE CONTRACTOR'S RESPONSIBILITY TO REPLACE ANY PLANTS THAT DIE AS A RESULT OF DROUGHT OR INADEQUATE CARE.
- IDEAL PLANTING DATES: APRIL 15 TO SEPTEMBER 15.

#### SEEDING SEASON MAINTENANCE

#### FIRST GROWING SEASON

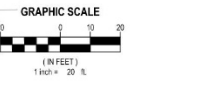
- WHEN NORMAL MEADOW VEGETATION REACHED 17"-24" FROM THE MEADOW GRASS, A 1/2" X 1/2" X 1/2" INCH OR STRONG TRIMMER TO A HEIGHT OF NO LESS THAN 12 INCHES COMPETITION BY FAST-GROWING WEEDS. A LAWN MOWER IS NOT RECOMMENDED TO PREVENT NESTING OF BIRDS FROM BEYOND.
- MOWING OF MEADOW AREA SHOULD BE DONE TWICE IN THE FIRST YEAR, A THIRD MOWING IS PREFERRED. TRIMMING SHOULD CEASE BY MARCH 15 THEREAFTER.

#### SECOND GROWING SEASON AND BEYOND

- A SUMMARY OF ONCE A YEAR MAINTENANCE RECOMMENDATIONS FOLLOWING THE METHODS AND TIMING NOTED ABOVE:

COMMON NAME	BOTANICAL NAME	PERCENTAGE ROLL RATES
FLORAWAIVER PA ECOTYPE	SCORPASTERONIA FLANDRA ECOTYPE	20
CRISONIA VULPINA ECOTYPE	ERUJA VEGESCA ECOTYPE	20
RED TOP PA ECOTYPE	PANICUM RUSTICUM PA ECOTYPE	15
CROWNED LARKSPUR ECOTYPE	PANICUM VIRGATUM ECOTYPE	15
PIPER GRASS ECOTYPE	CHAMEROPHYLLUM LACINIOSUM ECOTYPE	10
BLACKTOP ECOTYPE	CHAMEROPHYLLUM LACINIOSUM ECOTYPE	10
BLACKTOP ECOTYPE	PLEROCLEMA VITIFOLIA	3
LINCEUM ECOTYPE	COFFEOUS PALMATA	2
GREY SUEWORT PA ECOTYPE	HELIOPSIS HELWA THODES PA ECOTYPE	2
WINTER-BURN GRASS ECOTYPE	RUFOPUS REVERENS ECOTYPE	1
VERMONT PRORIVED PA ECOTYPE	VERMONTA NOVOROBENSIS PA ECOTYPE	1

COVER CHECK FOR CLUCK DATE: JUNE 1 TO JULY 31 - 50%  
 WINTER DATE: AUG 1 TO OCT 31 - 25%  
 WINTER DATE: NOV 1 TO DEC 31 - 10%



H2M Architects & Engineers, Inc.  
 119 Cherry Hill Road, Suite 110  
 Parsippany, NJ 07654  
 862.207.5900 • www.h2m.com  
 NJ Architecture Certificate of Authorization No. 21A020102090  
 NJ Engineering Certificate of Authorization No. 25A020202090



#### CONSULTANTS

MARK	DATE	DESCRIPTION

MARK	DATE	DESCRIPTION

RICHARD B. SCHOMMER, JR., P.E.  
 LICENSED PROFESSIONAL ENGINEER IN THE STATE OF NEW JERSEY  
 LICENSE NO. 25A020202090

DESIGNED BY	DATE	CHECKED BY	DATE
RBS	MAR 12, 2024	TM	AS SHOWN

Borough of Metuchen

EMERGENCY SERVICES CENTER



1 SAFETY PLACE  
 METUCHEN NJ 08840  
 BOROUGH OF METUCHEN  
 COUNTY OF MIDDLESEX  
 NEW JERSEY

90% - NFC

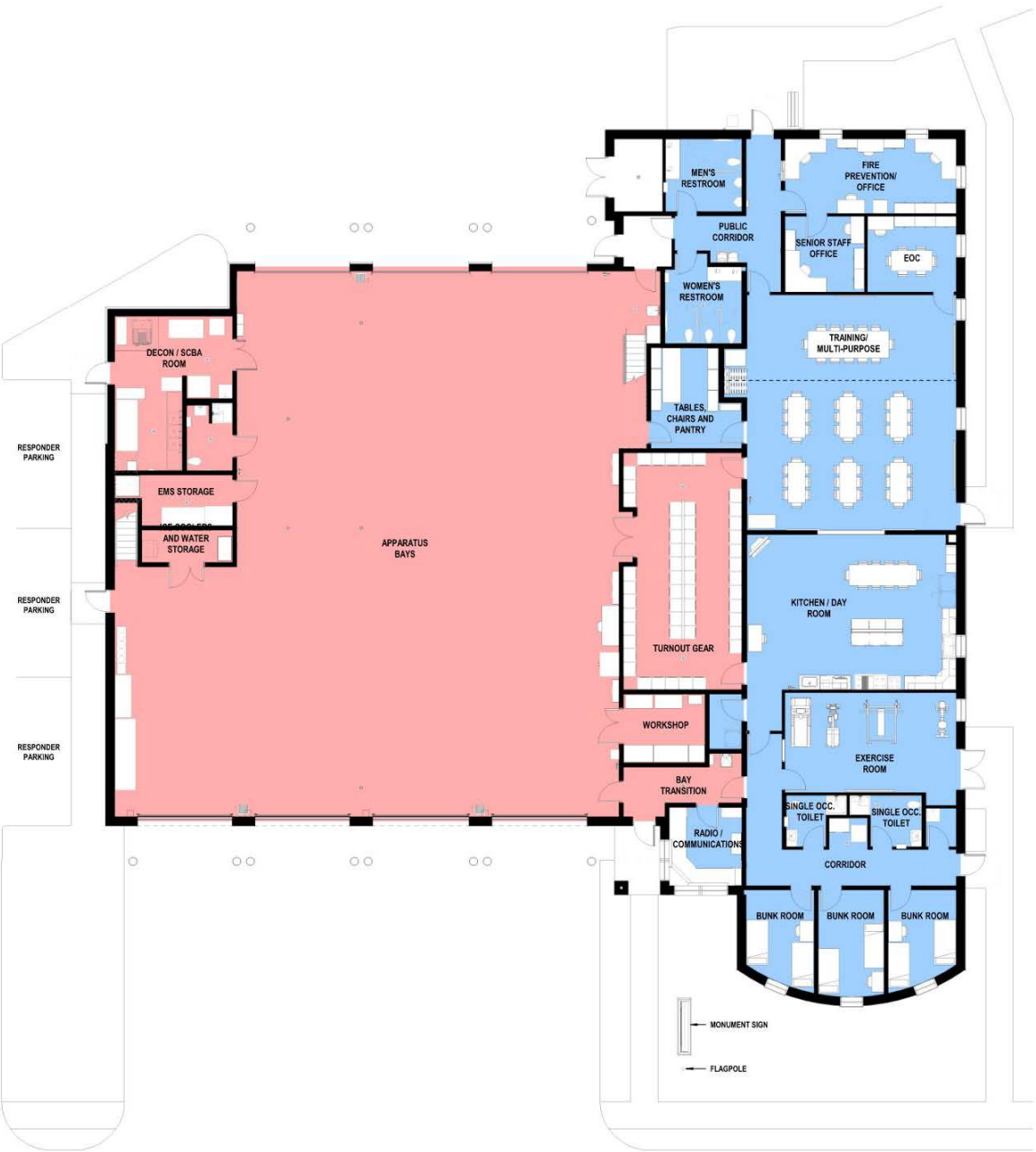
LANDSCAPE PLAN

CL 100.00

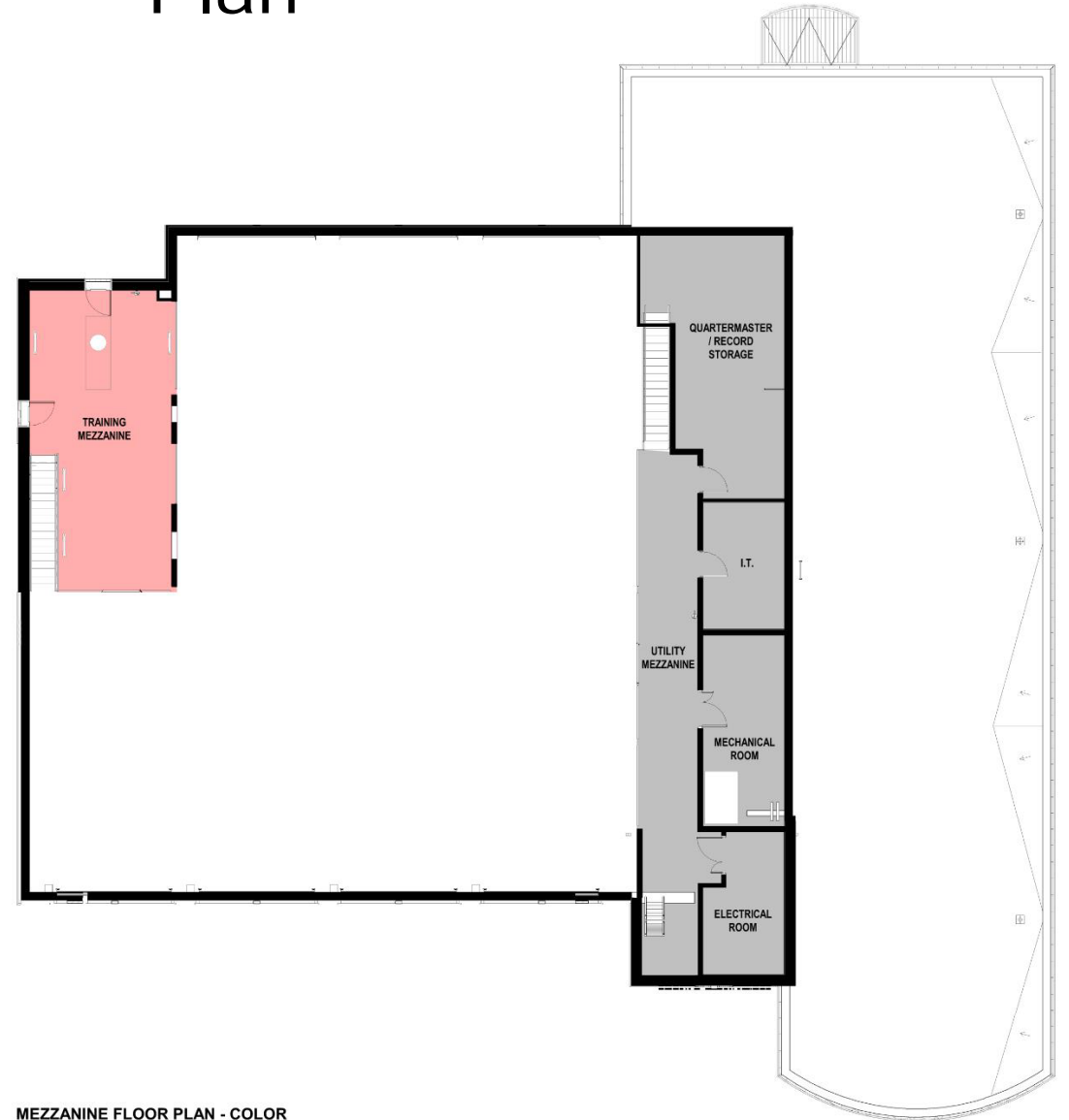
811-1-800-272-1000  
 One Call, New Jersey  
 Call811  
 Know what's below. Call before you dig  
 www.NJ-1-Call.org



# First Floor Plan



# Mezzanine Floor Plan

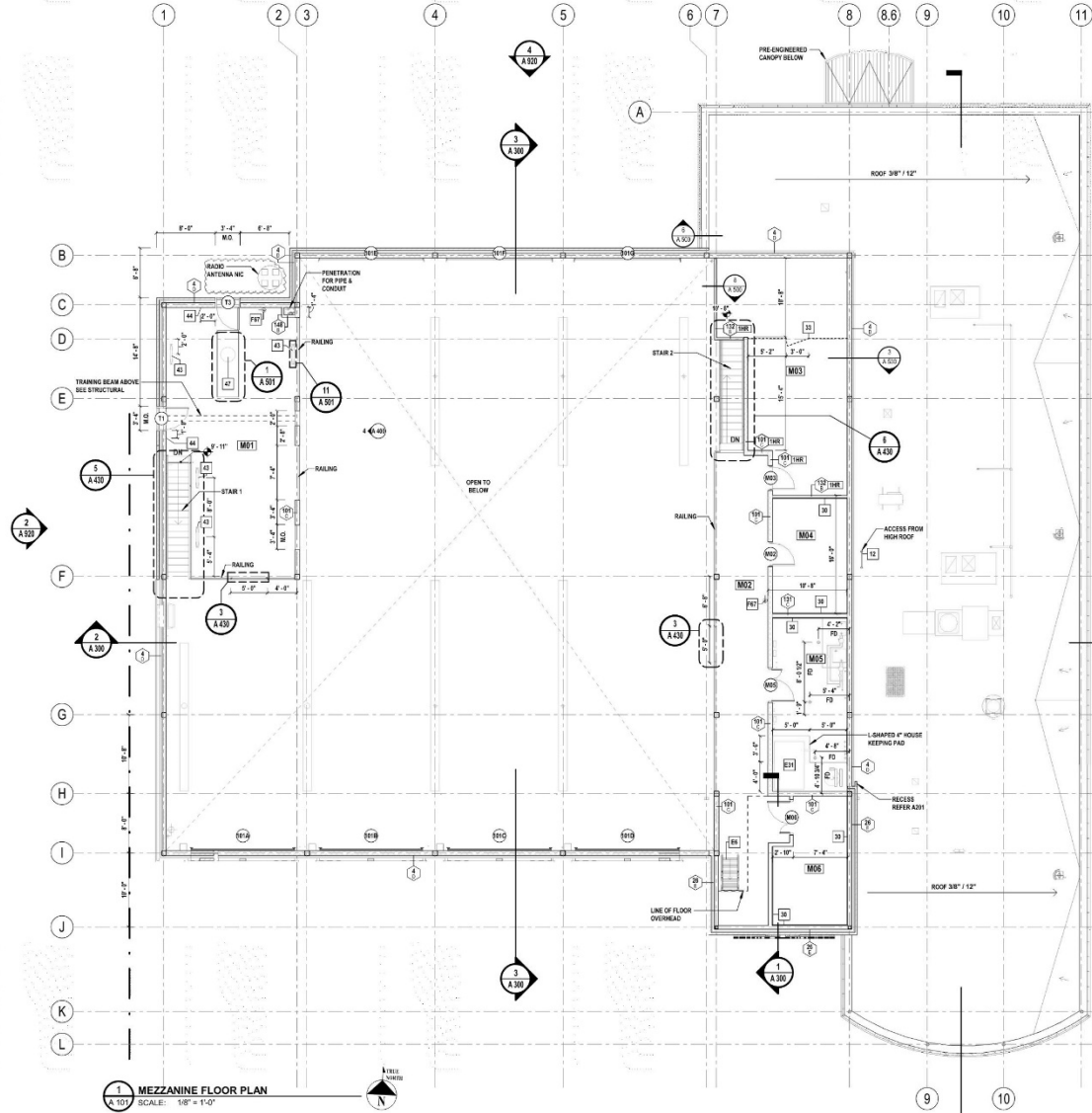


MEZZANINE FLOOR PLAN - COLOR









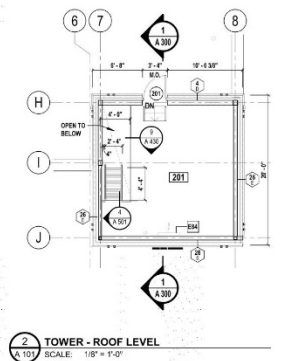
1 MEZZANINE FLOOR PLAN  
SCALE: 1/8" = 1'-0"

**KEYNOTES**

- ROOF ACCESS LADDER
- 3/4" FR FLYWOOD BACK-BEARD, 72" HIGH, 18" AFF (FULL WIDTH OF WALL, PAINT PROOF TO PANEL MOUNTING)
- WIRE MESH PARTITION
- TI-OFF RAIL - FLOOR MOUNTED
- D-RING - PLATE MOUNTED, 12" AFF TO BOTTOM OF PLATE
- MANHOLE COVER
- SHRIMP LADDER - 74"
- COMPRESSOR - HOUSE AIR, COMPRESSED AIR FOR TOOLS AND VEHICLES. HOUSEKEEPING PAD. NEEDS FLOOR DRAIN (NIC)
- CABINET UNIT HEATER - RECESSED
- FIRE EXTINGUISHER - SURFACE MOUNTED

**ROOM SCHEDULE - MEZZANINE**

Number	Name
M01	TRAINING MEZZANINE
M02	UTILITY MEZZANINE
M03	QUARTERMASTER / RECORD STORAGE
M04	I.T.
M05	MECHANICAL ROOM
M06	ELECTRICAL ROOM



2 TOWER - ROOF LEVEL  
SCALE: 1/8" = 1'-0"

**H2M Architects & Engineers, Inc.**  
119 Cherry Hill Road, Suite 110  
Paramus, NJ 07654  
862.267.5900 • www.h2m.com  
NJ Architecture Certificate of Authorization No.: 21A209849200  
NJ Engineering Certificate of Authorization No.: 2450A2902500

**CONSULTANTS**

MARK	DATE	DESCRIPTION
00	MAR. 6, 2024	90% - NFC

MARK	DATE	DESCRIPTION

**DENNIS A. ROSS, R.A.**  
ARCHITECTURAL REGISTERED PROFESSIONAL ENGINEER  
A MEMBER OF THE SOCIETY OF PROFESSIONAL ENGINEERS AND ARCHITECTS  
THIS SEAL IS THE PROPERTY OF DENNIS A. ROSS, R.A. IT IS TO BE USED ONLY BY DENNIS A. ROSS, R.A. AND IS NOT TO BE REPRODUCED OR TRANSMITTED IN ANY FORM OR BY ANY MEANS, ELECTRONIC OR MECHANICAL, INCLUDING PHOTOCOPYING, RECORDING, OR BY ANY INFORMATION STORAGE AND RETRIEVAL SYSTEM.  
DESIGNED BY: **DJR** DRAWN BY: **SKM** CHECKED BY: **KMP** REVIEWED BY: **JBL**  
PROJECT NO: **BOME2201** DATE: **MAR 12, 2024** SCALE: **AS SHOWN**

**CLIENT**  
**Borough of Metuchen**

**EMERGENCY SERVICES CENTER**



**1 SAFETY PLACE  
METUCHEN, NJ 08840  
BOROUGH OF METUCHEN  
COUNTY OF MIDDLESEX  
NEW JERSEY**

**STATUS**  
90% - NFC

**SHEET TITLE**  
MEZZANINE FLOOR PLAN

**DRAWING No.**  
**A 101.00**



H2M Architects & Engineers, Inc.  
119 Cherry Hill Road, Suite 110  
Paramus, NJ 07654  
862.207.5900 • www.h2m.com  
NJ Architecture Certificate of Authorization No. 21AC00840200  
NJ Engineering Certificate of Authorization No. 24AG00025500

CONSULTANTS

MARK	DATE	DESCRIPTION
00	MAR. 6, 2024	90% - NFC

DENNIS A. ROSS, R.A.  
CERTIFIED ARCHITECT - NJ ARCHITECTS  
ATTORNEY AT LAW  
ATTORNEY OF THE STATE OF NJ  
THIS SEAL IS TO BE USED ONLY ON OFFICIAL ARCHITECTURE OR ENGINEERING DRAWINGS AND SHALL BE USED IN ACCORDANCE WITH THE RULES OF THE BOARD OF ARCHITECTS AND ENGINEERS OF THE STATE OF NEW JERSEY.  
DESIGNED BY: DJP  
CHECKED BY: SKM  
DATE: MAR 12, 2024  
SCALE: AS SHOWN

CLIENT  
**Borough of Metuchen**

EMERGENCY SERVICES CENTER

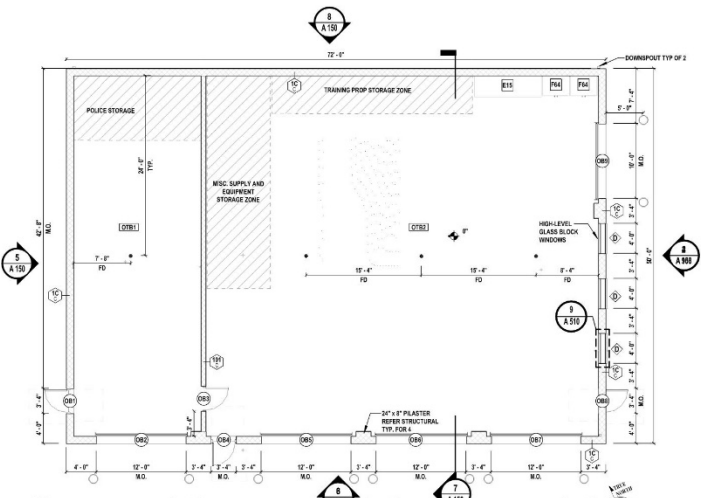


1 SAFETY PLACE  
METUCHEN, NJ 08840  
BOROUGH OF METUCHEN  
COUNTY OF MIDDLESEX  
NEW JERSEY

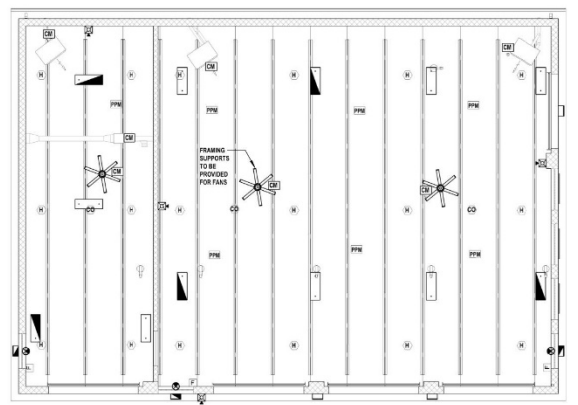
STATUS  
90% - NFC

SHEET TITLE  
OUTBUILDING DRAWINGS

DRAWING No.  
**A 150.00**



1 OUTBUILDING - FLOOR PLAN  
SCALE: 1/8" = 1'-0"



2 OUTBUILDING - RCP  
SCALE: 1/8" = 1'-0"

**ACMU LEGEND**

ACMU1 - 16" x 8" x 12"  
YORK BUILDING PRODUCTS' STANDARD SERIES - SMOOTH FACE - BUFF W/ INSULATION INSERT

ACMU2 - 16" x 8" x 12"  
YORK BUILDING PRODUCTS' STANDARD SERIES - SPLIT FACE - CLARET W/ INSULATION INSERT

**ACMU NOTES**

- PATTERN AND COURSING WRAPS CORNER AND CONTINUES ALONG NORTH ELEVATION.
- SUBMIT 12" ACMU "L" CORNER DETAILS FOR APPROVAL.
- REFER A510 FOR LOUVER SCHEDULE.

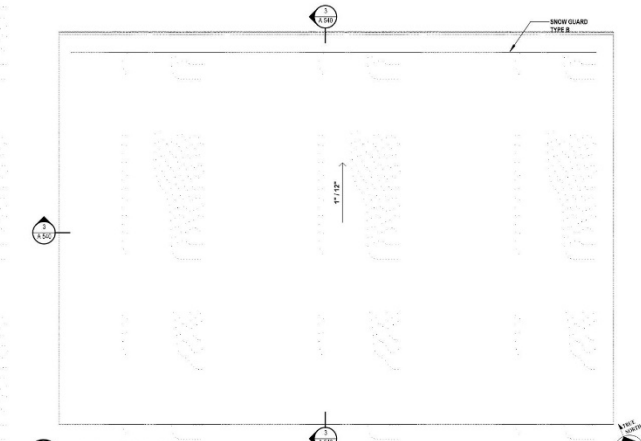
**ROOM SCHEDULE - OUTBUILDING**

Number	Name	Area
CTB1	POLICE STORAGE	818 SF
CTB2	FIRE & EMS STORAGE	1514 SF

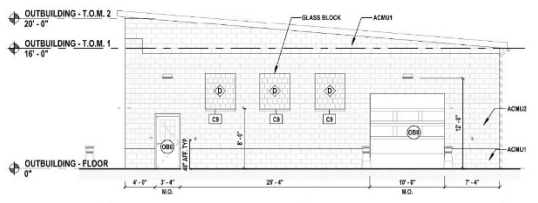
**KEYNOTES**

E15 MOBILE HOSE SYSTEM - MINI (5 HOSE SHELVES W/ WINDER (NIC))

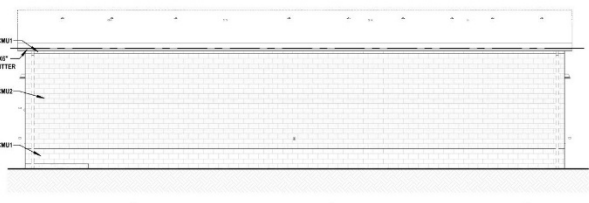
F64 FLAMMABLE STORAGE CABINET - (2) 2' VENT CONNECTIONS, ROUTE VENTS TO EXTERIOR, 4' ADJUSTABLE LEGS (NIC)



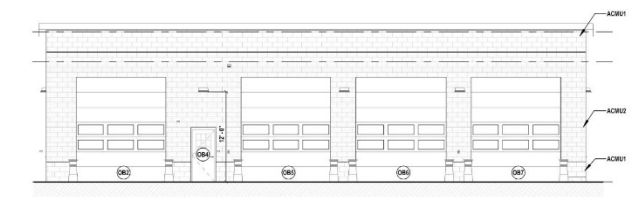
3 OUTBUILDING - ROOF PLAN  
SCALE: 1/8" = 1'-0"



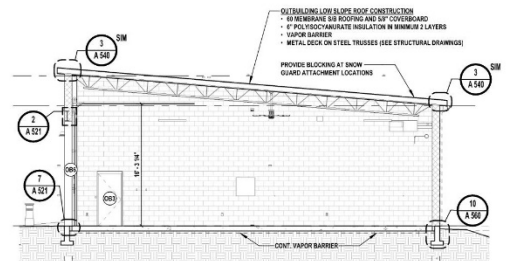
4 OUTBUILDING - EAST ELEVATION  
SCALE: 1/8" = 1'-0"



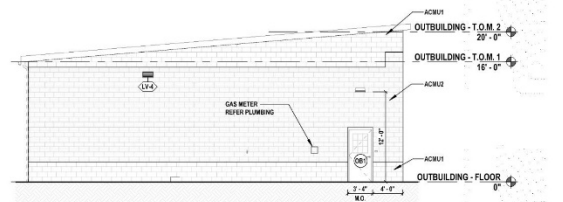
5 OUTBUILDING - NORTH ELEVATION  
SCALE: 1/8" = 1'-0"



6 OUTBUILDING - SOUTH ELEVATION  
SCALE: 1/8" = 1'-0"



7 OUTBUILDING - SECTION  
SCALE: 1/8" = 1'-0"



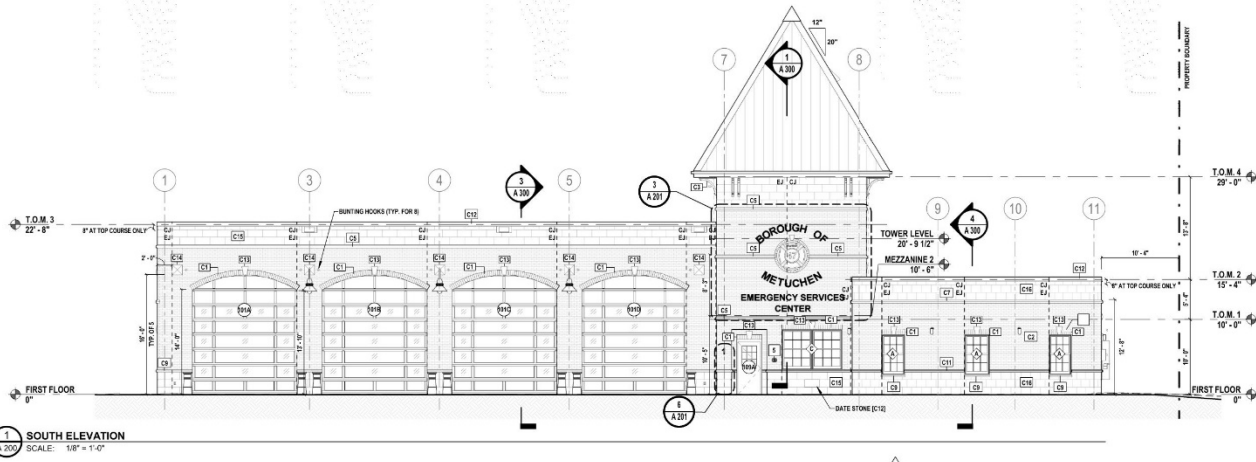
8 OUTBUILDING - WEST ELEVATION  
SCALE: 1/8" = 1'-0"



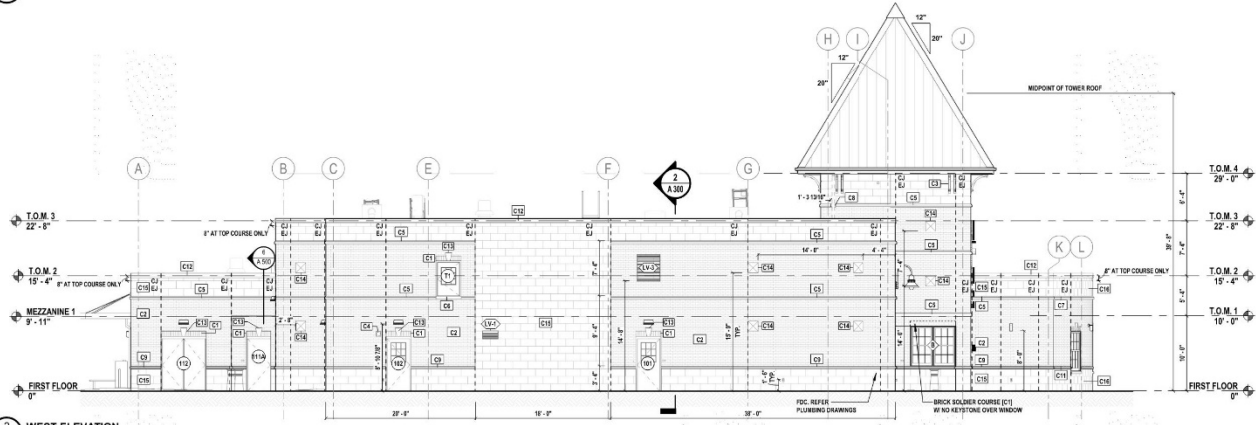
# First Floor Plan



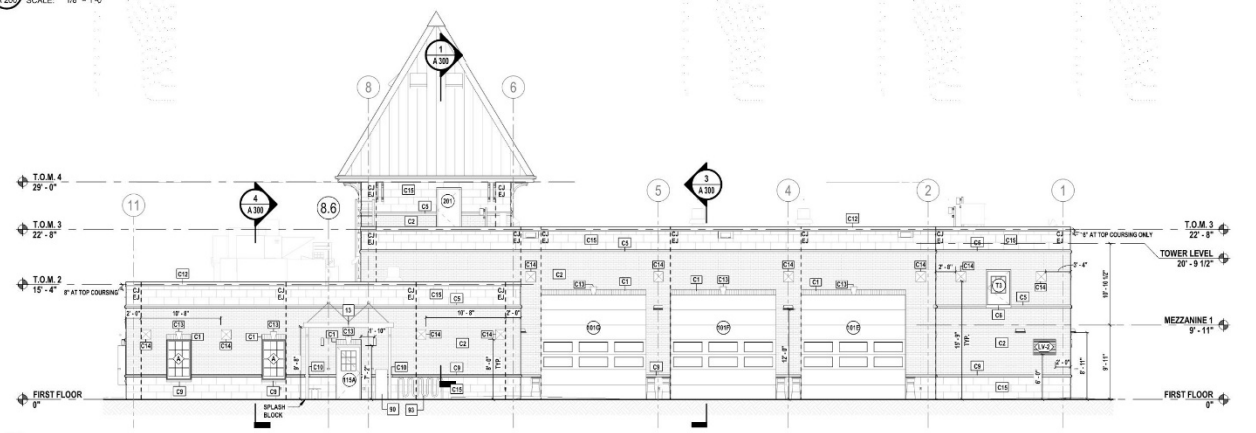
**OUTBUILDING PLAN - COLOR**



**1 SOUTH ELEVATION**  
SCALE: 1/8" = 1'-0"



**2 WEST ELEVATION**  
SCALE: 1/8" = 1'-0"



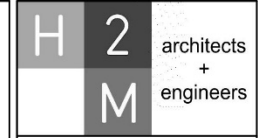
**3 NORTH ELEVATION**  
SCALE: 1/8" = 1'-0"

**ELEVATION NOTES**

1. REFER TO A201 FOR ELEVATION LEGEND
2. REFER A510 FOR LOUVER SCHEDULE

**KEYNOTES**

- 5 RECESSED KNOX BOX - FURNISHED BY OWNER, MOUNT BOTTOM OF BOX 4' AFF. COORDINATE EXACT LOCATION WITH OWNER
- 13 PRE-ENGINEERED CANOPY
- 90 DELIVERY DROPBOX (SECTION 107423)
- 93 BICYCLE RACK - SEE CIVIL DRAWINGS



**H2M Architects & Engineers, Inc.**  
119 Cherry Hill Road, Suite 110  
Paramus, NJ 07654  
862.267.5900 • www.h2m.com

NJ Architecture Certificate of Authorization No.: 21A20604200  
NJ Engineering Certificate of Authorization No.: 240A2892500

**CONSULTANTS**

MARK	DATE	DESCRIPTION
00	MAR 6, 2024	90% - NFC

**DENNIS A. ROSS, R.A.**  
PROFESSIONAL ARCHITECT IN NJ  
400 WASHINGTON STREET, SUITE 200, LINDEN, NJ 07036  
THIS SEAL IS THE PROPERTY OF DENNIS A. ROSS, R.A. IT IS TO BE USED ONLY BY DENNIS A. ROSS, R.A.

DESIGNED BY	DRAWN BY	CHECKED BY	REVIEWED BY
EJP	SMH	KMP	JBL
PROJECT NO.	DATE	SCALE	
BOME2201	MAR 12, 2024	AS SHOWN	

**Borough of Metuchen**

**EMERGENCY SERVICES CENTER**



1 SAFETY PLACE  
METUCHEN, NJ 08840  
BOROUGH OF METUCHEN  
COUNTY OF MIDDLESEX  
NEW JERSEY

STATUS: 90% - NFC

SHEET TITLE: NORTH, WEST & SOUTH ELEVATIONS

DRAWING No. **A 200.00**







SOUTH ELEVATION - COLOR

# Elevations



WEST ELEVATION - COLOR

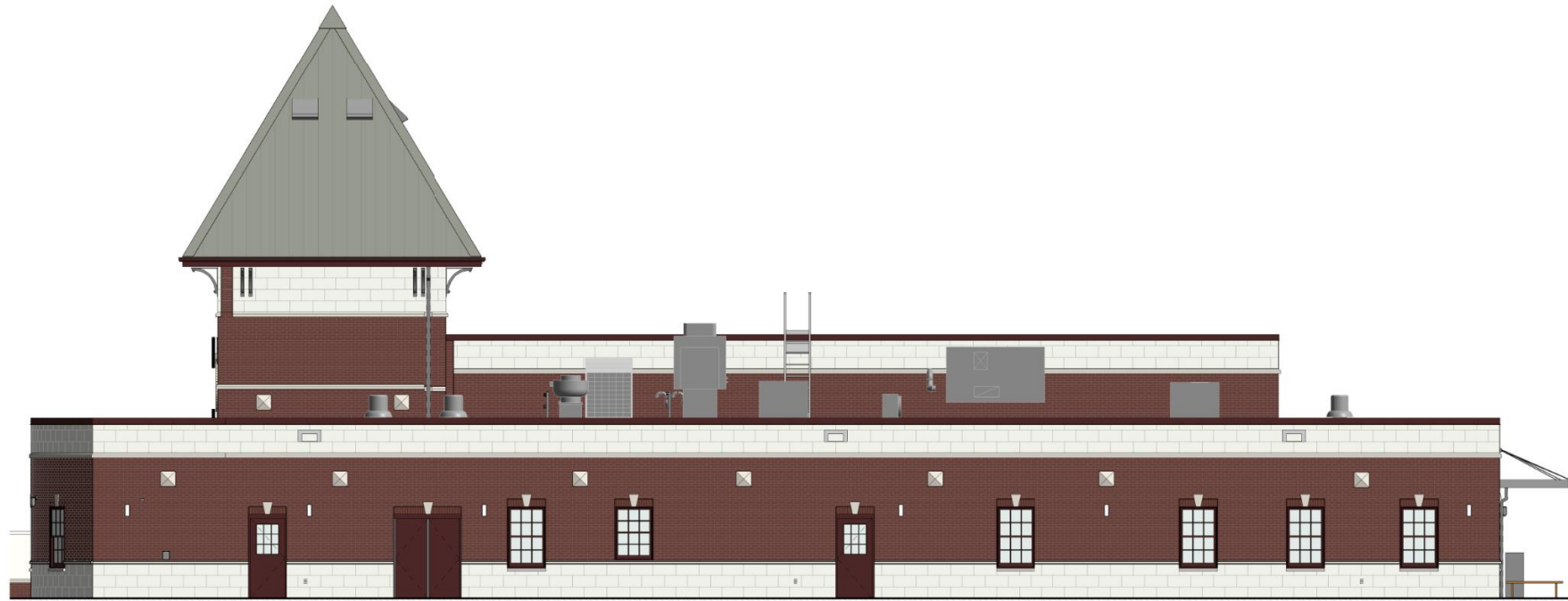


# Elevations



**NORTH ELEVATION - COLOR**

# Elevations



EAST ELEVATION - COLOR



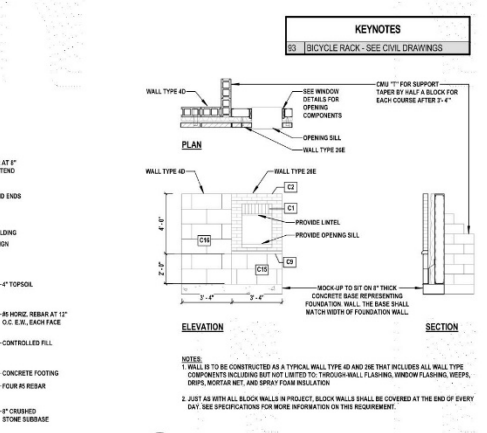
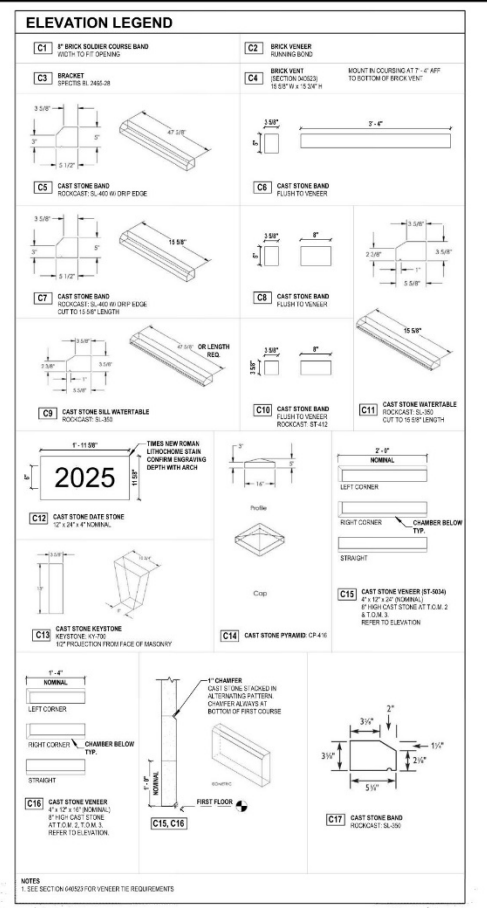
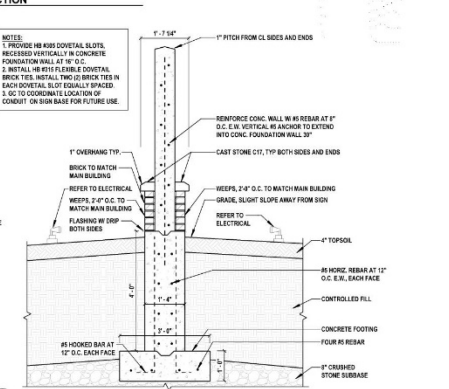
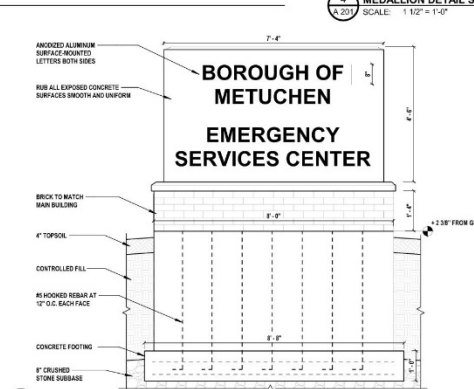
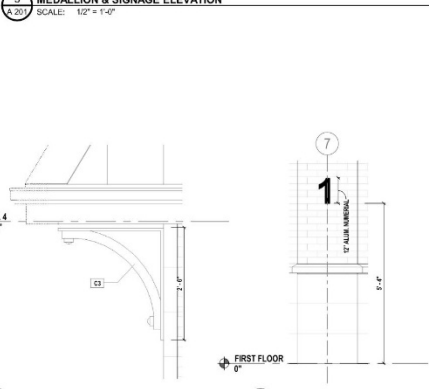
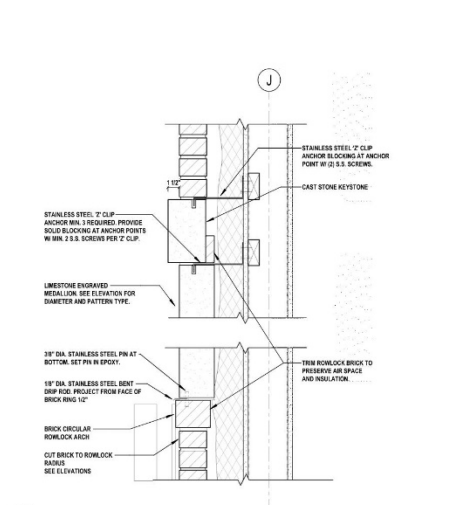
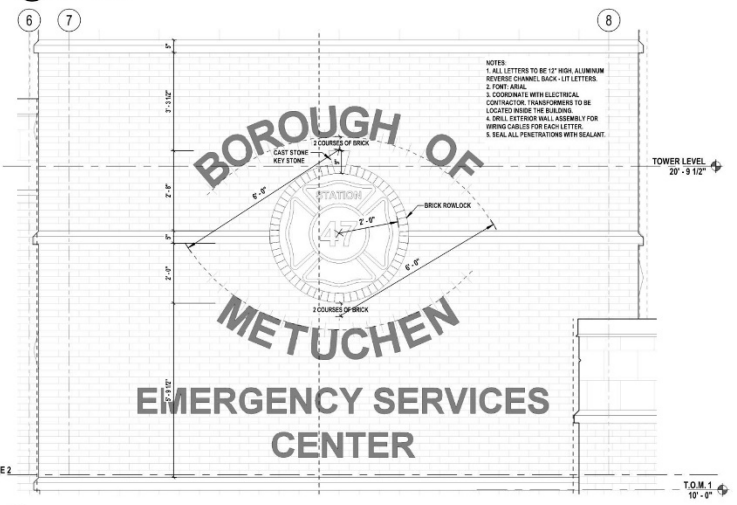
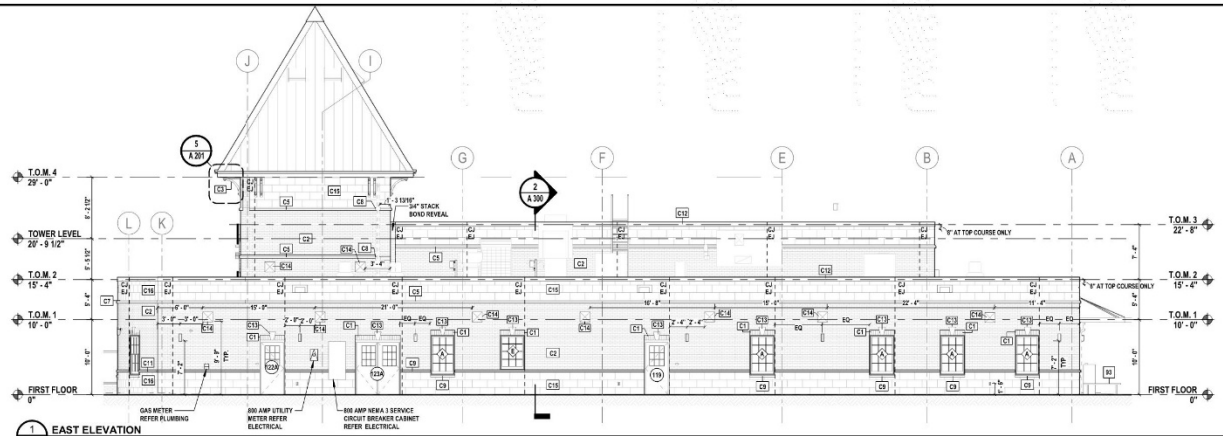
# Elevations



**OUTBUILDING - SOUTH ELEVATION - COLOR**



**OUTBUILDING - EAST ELEVATION - COLOR**



**H 2 M** architects + engineers

**H 2 M** architects + engineers

**H2M Architects & Engineers, Inc.**  
119 Cherry Hill Road, Suite 110  
Paranapark, NJ 07654  
862.267.5900 • www.h2m.com  
NJ Architecture Certificate of Authorization No.: 21A200604200  
NJ Engineering Certificate of Authorization No.: 2462A025500

**CONSULTANTS**

MARK	DATE	DESCRIPTION
00	MAR. 6, 2024	90% - NFC

**DENNIS A. ROSS, R.A.**  
REGISTERED ARCHITECT IN THE STATE OF NEW JERSEY  
4000 STATE STREET, SUITE 200, NEWARK, NJ 07102  
PROJECT: BOME201 DATE: MAR 12, 2024 SCALE: AS SHOWN

**Borough of Metuchen**

**EMERGENCY SERVICES CENTER**

**1 SAFETY PLACE  
METUCHEN, NJ 08840  
BOROUGH OF METUCHEN  
COUNTY OF MIDDLESEX  
NEW JERSEY**

**STATUS** 90% - NFC

**SHEET TITLE** EAST ELEVATION, ELEVATION CALLOUTS & DETAILS

**DRAWING No.** **A 201.00**



# Energy & Sustainability

- Provide Infrastructure for the Future
- Placement of Conduits in Parking Lot for Future Solar Canopy
- Indigenous Landscaping / Retention Basin
- Local materials and Recycled Products
- Durable Material Selection for Longevity / Low Maintenance
- High Levels of Insulation and Envelope Tightness
- On-Site Drainage & Stormwater Management
- Construction Activity Pollution Prevention (SWPPP)
- Oil-Water Separator for Trench Drains
- Grease Interceptor for Kitchen Waste
- In-Floor Radiant Heat (Bays & Bay Support)
- High Efficiency HVAC Systems
- LED lighting
- Energy Efficient Mechanical Equipment



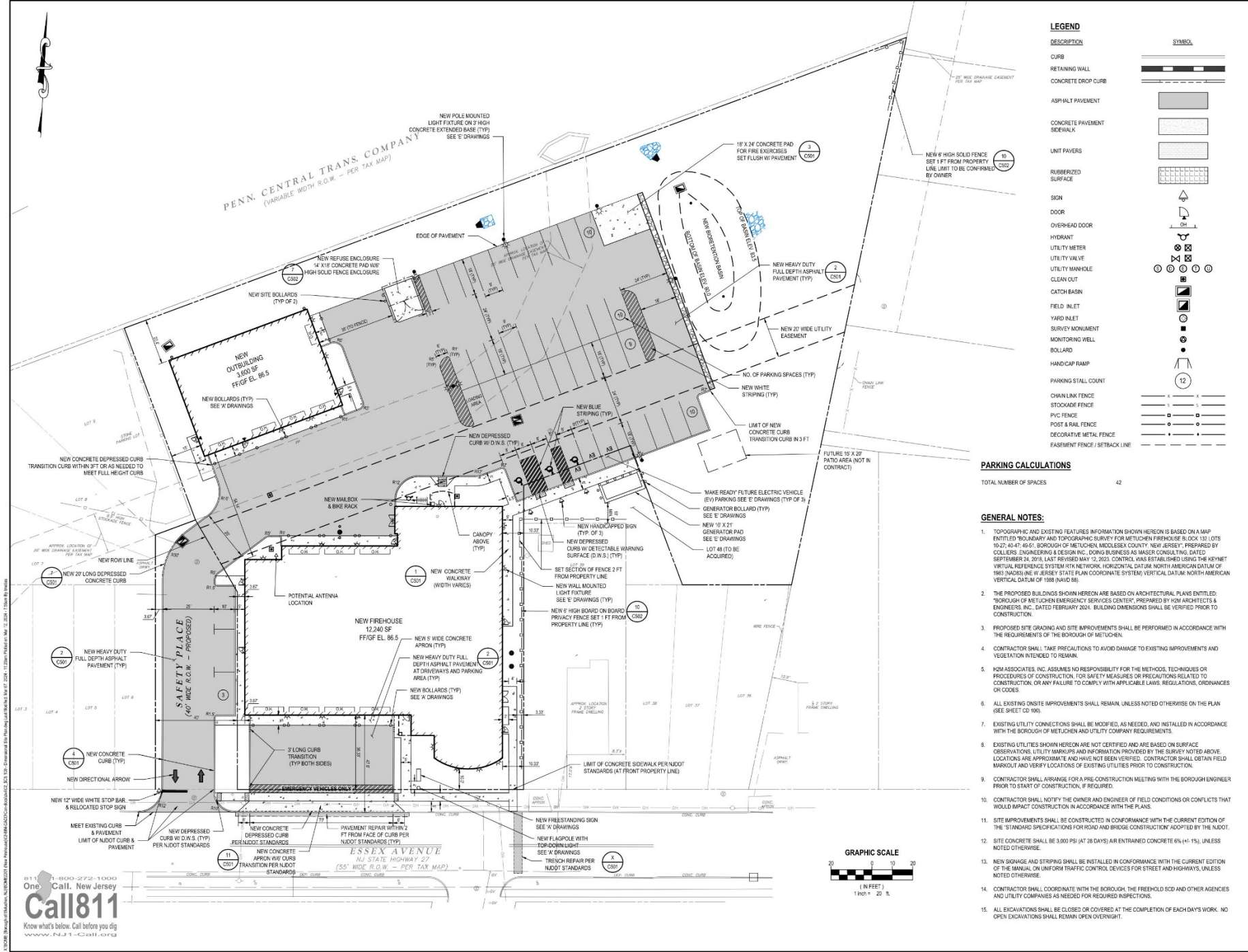
# Thank You

# Questions and

# Answers







**LEGEND**

DESCRIPTION	SYMBOL
CURB	[Symbol]
RETAINING WALL	[Symbol]
CONCRETE DROP CURB	[Symbol]
ASPHALT PAVEMENT	[Symbol]
CONCRETE PAVEMENT SIDEWALK	[Symbol]
UNIT PAVERS	[Symbol]
RUBBERIZED SURFACE	[Symbol]
SIGN	[Symbol]
OVER-HEAD DOOR	[Symbol]
FYDANT	[Symbol]
UTILITY METER	[Symbol]
UTILITY VALVE	[Symbol]
UTILITY MANHOLE	[Symbol]
CLEAN OUT	[Symbol]
CATCH BASIN	[Symbol]
FIELD INLET	[Symbol]
YARD INLET	[Symbol]
SURVEY MONUMENT	[Symbol]
MONITORING WELL	[Symbol]
BOLLARD	[Symbol]
HANDICAP RAMP	[Symbol]
PARKING STALL COUNT	[Symbol]
CHAINLINK FENCE	[Symbol]
STOCKADE FENCE	[Symbol]
PVC FENCE	[Symbol]
POST & RAIL FENCE	[Symbol]
DECORATIVE METAL FENCE	[Symbol]
EASEMENT FENCE / SETBACK LINE	[Symbol]

**PARKING CALCULATIONS**  
TOTAL NUMBER OF SPACES 42

- GENERAL NOTES:**
- TOPOGRAPHIC AND EXISTING FEATURES INFORMATION SHOWN HEREON IS BASED ON A MAP ENTITLED "BOUNDARY AND TOPOGRAPHIC SURVEY FOR METUCHEN FIREHOUSE & LOT 132 (LOTS 10-27; 40-47; 49-51; BOROUGH OF METUCHEN, MIDDLESEX COUNTY, NEW JERSEY), PREPARED BY COLLIER ENGINEERING & DESIGN INC. DOING BUSINESS AS MASS CONSULTING, DATED SEPTEMBER 24, 2018. LAST REVISED MAY 12, 2023. CONTROL WAS ESTABLISHED USING THE KEYNET VIRTUAL REFERENCE SYSTEM RTK NETWORK, HORIZONTAL DATUM NORTH AMERICAN DATUM OF 1983 (NAD83) IN W. JERSEY STATE PL. COORDINATE SYSTEM; VERTICAL DATUM NORTH AMERICAN VERTICAL DATUM OF 1988 (NAVD 88).
  - THE PROPOSED BUILDINGS SHOWN HEREON ARE BASED ON ARCHITECTURAL PLANS ENTITLED "BOROUGH OF METUCHEN EMERGENCY SERVICES CENTER", PREPARED BY H2M ARCHITECTS & ENGINEERS, INC. DATED FEBRUARY 2024. BUILDING DIMENSIONS SHALL BE VERIFIED PRIOR TO CONSTRUCTION.
  - PROPOSED SITE GRADING AND SITE IMPROVEMENTS SHALL BE PERFORMED IN ACCORDANCE WITH THE REQUIREMENTS OF THE BOROUGH OF METUCHEN.
  - CONTRACTOR SHALL TAKE PRECAUTIONS TO AVOID DAMAGE TO EXISTING IMPROVEMENTS AND VEGETATION INTENDED TO REMAIN.
  - H2M ASSOCIATES, INC. ASSUMES NO RESPONSIBILITY FOR THE METHODS, TECHNIQUES OR PROCEDURES OF CONSTRUCTION, FOR SAFETY MEASURES OR PRECAUTIONS RELATED TO CONSTRUCTION, OR ANY FAILURE TO COMPLY WITH APPLICABLE LAWS, REGULATIONS, ORDINANCES OR CODES.
  - ALL EXISTING ON-SITE IMPROVEMENTS SHALL REMAIN, UNLESS NOTED OTHERWISE ON THE PLAN (SEE SHEET CD 100).
  - EXISTING UTILITY CONNECTIONS SHALL BE MODIFIED, AS NEEDED, AND INSTALLED IN ACCORDANCE WITH THE BOROUGH OF METUCHEN AND UTILITY COMPANY REQUIREMENTS.
  - EXISTING UTILITIES SHOWN HEREON ARE NOT CERTIFIED AND ARE BASED ON SURFACE OBSERVATIONS. UTILITY MARKUPS AND INFORMATION PROVIDED BY THE SURVEY NOTED ABOVE LOCATIONS ARE APPROXIMATE AND HAVE NOT BEEN VERIFIED. CONTRACTOR SHALL OBTAIN FIELD MARKOUT AND VERIFY LOCATIONS OF EXISTING UTILITIES PRIOR TO CONSTRUCTION.
  - CONTRACTOR SHALL ARRANGE FOR A PRE-CONSTRUCTION MEETING WITH THE BOROUGH ENGINEER PRIOR TO START OF CONSTRUCTION, IF REQUIRED.
  - CONTRACTOR SHALL NOTIFY THE OWNER AND ENGINEER OF FIELD CONDITIONS OR CONFLICTS THAT WOULD IMPACT CONSTRUCTION IN ACCORDANCE WITH THE PLANS.
  - SITE IMPROVEMENTS SHALL BE CONSTRUCTED IN CONFORMANCE WITH THE CURRENT EDITION OF THE "STANDARD SPECIFICATIONS FOR ROAD AND BRIDGE CONSTRUCTION" ADOPTED BY THE N.J.O.T.
  - SITE CONCRETE SHALL BE 3,000 PSI (AT 28 DAYS) AIR ENTRAINED CONCRETE 6% (+/- 1%), UNLESS NOTED OTHERWISE.
  - NEW SIGNAGE AND STRIPING SHALL BE INSTALLED IN CONFORMANCE WITH THE CURRENT EDITION OF THE MANUAL ON UNIFORM TRAFFIC CONTROL DEVICES FOR STREET AND HIGHWAYS, UNLESS NOTED OTHERWISE.
  - CONTRACTOR SHALL COORDINATE WITH THE BOROUGH, THE FREEHOLD SCD AND OTHER AGENCIES AND UTILITY COMPANIES AS NEEDED FOR REQUIRED INSPECTIONS.
  - ALL EXCAVATIONS SHALL BE CLOSED OR COVERED AT THE COMPLETION OF EACH DAY'S WORK. NO OPEN EXCAVATIONS SHALL REMAIN OPEN OVERNIGHT.



architects + engineers

**H2M Architects & Engineers, Inc.**  
119 Cherry Hill Road, Suite 110  
Paranippany, NJ 07654  
862.267.5900 • www.h2m.com  
NJ Architecture Certificate of Authorization No. 21A020102290  
NJ Engineering Certificate of Authorization No. 26A03022590

REVISIONS:

MARK	DATE	DESCRIPTION

MARK	DATE	DESCRIPTION

MARK	DATE	DESCRIPTION

**RICHARD B. SCHOMMER, JR. P.E.**  
REGISTERED PROFESSIONAL ENGINEER IN THE STATE OF NEW JERSEY  
No. 26A03022590  
DATE OF EXPIRATION: 12/31/2026  
DESIGNED BY: RBS  
CHECKED BY: TM  
PROJECT NO.: BOME2201  
DATE: MAR 12, 2024  
SCALE: AS SHOWN

**Borough of Metuchen**

**EMERGENCY SERVICES CENTER**



**1 SAFETY PLACE  
METUCHEN NJ 08840  
BOROUGH OF METUCHEN  
COUNTY OF MIDDLESEX  
NEW JERSEY**

90% - NFC

**DIMENSIONAL SITE PLAN**

**CS 100.00**

811 1-800-272-1000  
One Call, New Jersey  
Call811  
Know what's below. Call before you dig  
www.NJ-Call811.com









**H2M Architects & Engineers, Inc.**  
 119 Cherry Hill Road, Suite 110  
 Parsippany, NJ 07054  
 862.267.5900 • www.h2m.com  
 NJ Architecture Certificate of Authorization No. 21A020102290  
 NJ Engineering Certificate of Authorization No. 26043022900

REVISIONS:

MARK	DATE	DESCRIPTION

MARK	DATE	DESCRIPTION

**RICHARD B. SCHOMMER, JR. P.E.**  
REGISTERED PROFESSIONAL ENGINEER - CIVIL - STATE OF NEW JERSEY  
 NO. 124030000 - EXPIRES 12/31/2024

DESIGNED BY	CHECKED BY	DATE	REVIEWED BY
RBS	TM	MAR 12, 2024	RBS

PROJECT NO: BOME2201 DATE: MAR 12, 2024 SCALE: AS SHOWN

**Borough of Metuchen**

**EMERGENCY SERVICES CENTER**



**1 SAFETY PLACE  
 METUCHEN NJ 08840  
 BOROUGH OF METUCHEN  
 COUNTY OF MIDDLESEX  
 NEW JERSEY**

STATUS: **90% - NFC**

SHEET TITLE: **SOIL EROSION AND SEDIMENT CONTROL PLAN**

DRAWING NO: **C 120.00**

**SOIL EROSION LEGEND**

DESCRIPTION	SYMBOL
LIMIT OF DISTURBANCE	
NEW FILTER FABRIC FENCE	
TREE PROTECTION FENCING	
NEW STABILIZED CONSTRUCTION ENTRANCE	
TOPSOIL STOCKPILE AREA	
TEST AREA FOR SOIL COMPACTION	
SOIL COMPACTION TESTING AREA LOCATION	
EXISTING TREE (TO REMAIN)	
EXISTING TREE (TO BE REMOVED)	

**SOIL TYPE:**  
 Lhb: LANSLOWNE URBAN LAND COMPLEX  
 Pfab: PARSIPPANY VERY POORLY DRAINED VARIANT SILT LOAM

**AREA OF DISTURBANCE:**

- WITHIN PROPERTY LIMITS = 655,383 SF / 1.36 ACRES
- WITHIN SAFETY PLACE R.O.W. = 4,760 SF / 0.11 ACRES
- WITHIN NUDET R.O.W. = 2,582 SF / 0.06 ACRES

**TOTAL AREA OF DISTURBANCE FOR PROJECT = 66,725 SF / 1.53 ACRES**

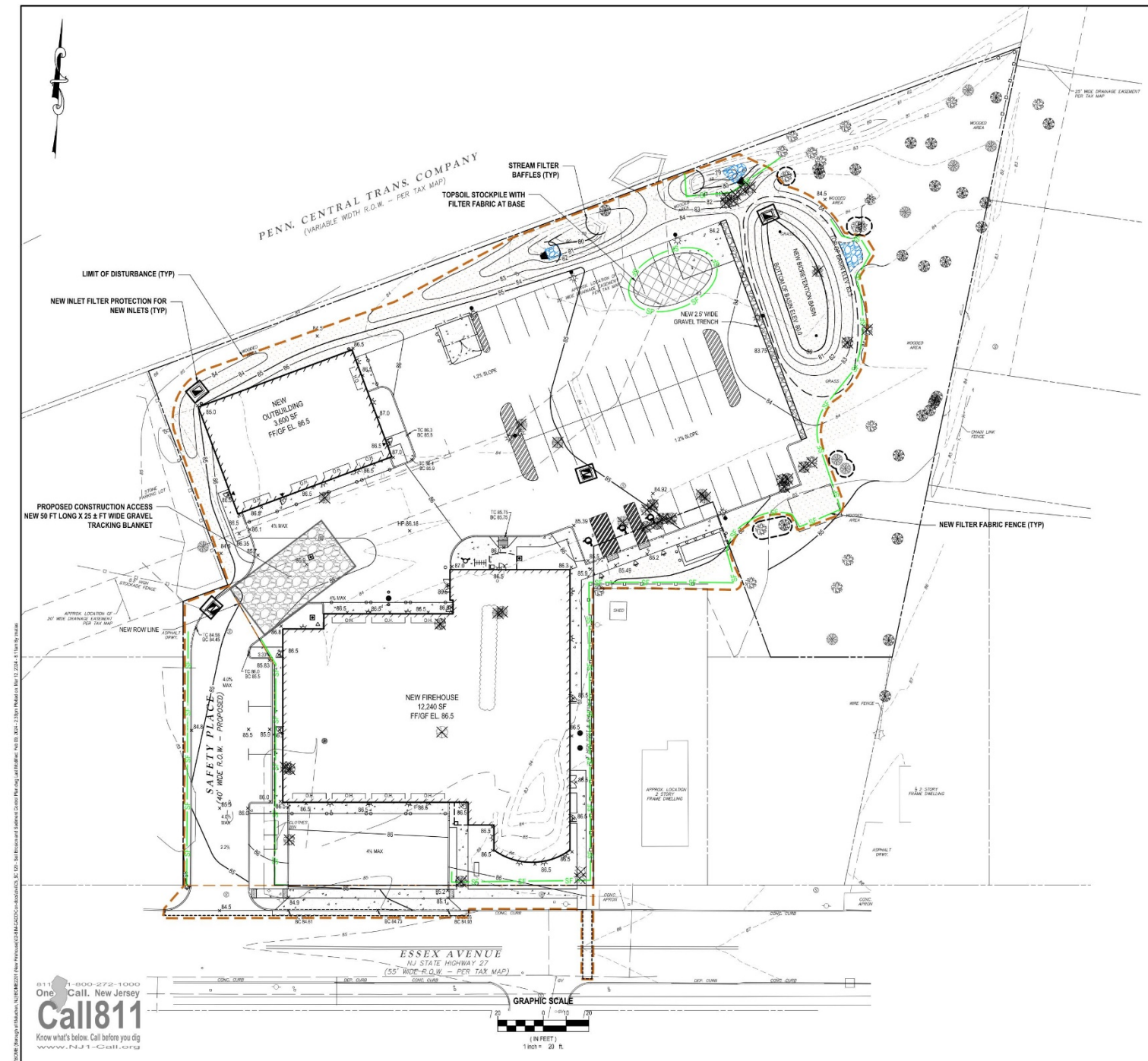
**AREA OF SOIL DECOMPACTION TESTING:**  
 TOTAL AREA OF SOIL DECOMPACTION TESTING = 10,000 SF / 0.24 ACRES

**SEQUENCE OF CONSTRUCTION:**

ITEM	DAYS
INSTALL FILTER FABRIC FENCE, INLET FILTER PROTECTION, GRAVEL TRACKING BLANKET, AND TREE PROTECTION FENCING	5
CLEAR AND GRUB	6
STRIP AND STOCKPILE TOPSOIL AND INSTALL FILTER FABRIC FENCE AT BASE	8
ROUGH GRADE SITE	15
UTILITY CONSTRUCTION	45
BUILDING CONSTRUCTION	540
CURBING, SIDEWALK, AND PAVEMENT BASE COURSE	20
COMPLETE SITE GRADING INCLUDING STORMWATER CONTROL MEASURES	15
PERFORM SUBSOIL COMPACTION REDUCTION - SCARIFICATION/TOILLAGE TO 6" MIN. DEPTH OR PERFORM SOIL COMPACTION TESTING	1
FINE GRADE SITE, SPREAD TOPSOIL, SEEDING, AND INSTALL LANDSCAPE PLANTS	20
PAVEMENT TOP COURSE	5
REMOVE ALL SOIL EROSION CONTROL MEASURES UPON COMPLETION OF PROJECT	5

**SOIL COMPACTION EXEMPTION NOTE**

AS DETERMINED BY THE STATE POLICY MAP, THE PROJECT AREA FALLS WITHIN THE METROPOLITAN PLANNING AREA (MPA). UNDER EXISTING CONDITIONS, THE SITE IS NOT COVERED IN WOODY VEGETATION NOR REGROWTH IN ACCORDANCE WITH NEW JERSEY STANDARD FOR LAND GRADING (REVISED 2017). NON WOODY VEGETATED PAT AREAS FALL UNDER THE SOIL COMPACTION EXEMPTION LIST AS A "URBAN REDEVELOPMENT" AND IS DEFINED BY NUDEP AS "PREVIOUSLY DEVELOPED".

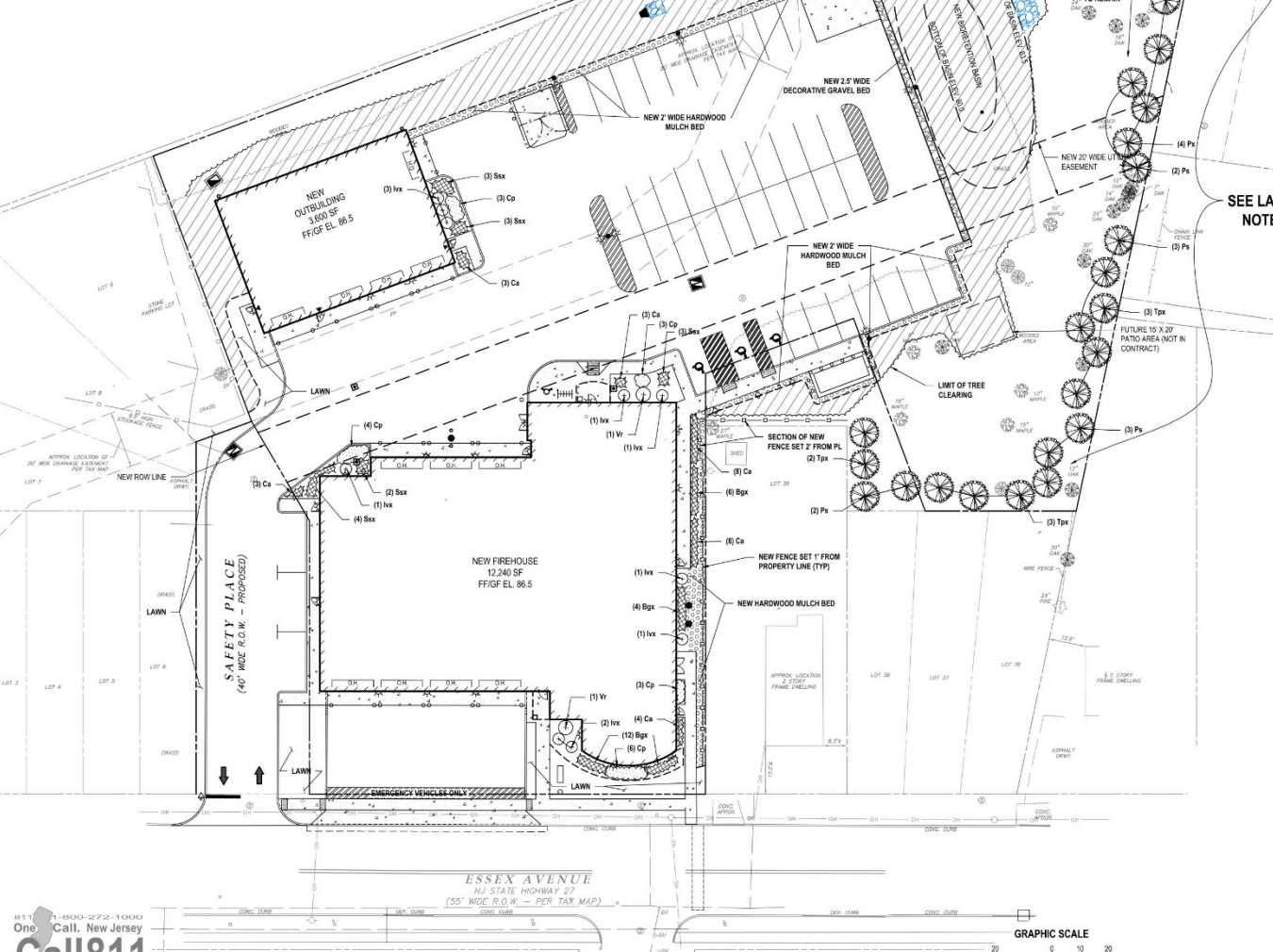


**PLANTING SCHEDULE**

KEY	QUANTITY	BOTANICAL NAME	COMMON NAME	SIZE	SPACING	REMARKS
<b>EVERGREEN TREES</b>						
Ps	13	PRINUS STROBUS	EASTERN WHITE PINE	6'-8'	17' O.C.	8 & 8 DENSE BRANCHING
Tm	16	THUJA 'GREEN GIANT'	GREEN GIANT ARBORVITAE	12'-14'	8' O.C.	8 & 8 DENSE BRANCHING
<b>LARGE SHRUBS</b>						
Vr	2	VIBURNUM RHIFLORUM 'LLOIDES' ALLEGHENY	ALLEGHENY VIBURNUM	3'-4'	8' O.C.	8 & 8 (WHITE FLOWERS/EVERGREEN LEAVES)
<b>DECIDUOUS / EVERGREEN SHRUBS</b>						
Nx	10	IRIS VIRGINICA 'LITTLE HENRY'	LITTLE HENRY (ORANGE) VIRGINIA SWEETPIRE	18'-24"	7' O.C.	NO. 2 CAN RED FLOWERS
<b>GRASSES / FORBS</b>						
Bp	27	BOUTELOUA ODRACILIS 'BLONDS AVANTION'	BLONDE AVANTION BLUE GRAMA GRASS	12'-18"	39" O.C.	NO. 2 CAN STAGGERED ROW
Cs	31	CAREX ALBICANS	WHITE-TIPPED SEDGE	12'-18"	39" O.C.	NO. 2 CAN STAGGERED ROW
Cs	18	CONOPSEUS PALMATA	STIFF CONOPSEUS	12'-18"	7' O.C.	NO. 2 CAN
Ss	15	SCHIZACHYRIUM SCOPARUM 'STANDING OVATION'	STANDING OVATION LITTLE BLUESTEM	12'-18"	7' O.C.	NO. 2 CAN

B & B - BALLED AND BURLAPPED  
 NOTE: ALL NEW PLANTS SPECIFIED HEREON ARE NATIVE SPECIES AND ARE NOT LISTED ON THE NJ INVASIVE SPECIES STRIKE TEAMS' 2022 DO NOT PLANT LIST

PENN. CENTRAL TRANS. COMPANY  
 (VARIABLE WIDTH ROW - PER TAX MAP)



**LANDSCAPE LEGEND**

DESCRIPTION	SYMBOL
EXISTING DECIDUOUS TREE (TO REMAIN)	[Symbol]
NEW EVERGREEN TREE	[Symbol]
NEW DECIDUOUS/EVERGREEN SHRUBS	[Symbol]
NEW MEADOW AREA	[Symbol]
HARDWOOD MULCH BED	[Symbol]
NEW GRASSES / FORBS	[Symbol]

**LANDSCAPE NOTES**

- ALL SUPPLIED AND INSTALLED PLANT MATERIAL SHALL BE NURSERY-GROWN STOCK IN ACCORDANCE WITH THE LATEST EDITION OF THE AMERICAN STANDARD FOR NURSERY STOCK (ANSI) AND 2011 PLANT MATERIAL SHALL BE OF THE APPROVED SPECIES AND GROWN UNDER THE SAME CLIMATIC CONDITIONS AS THE SUBJECT SITE. THEY SHALL BE OF PRIMA QUALITY, FREE OF INSECTS, PESTS AND DISEASE. SUBSTITUTIONS MUST BE APPROVED IN WRITING BY THE OWNER.
- CONFIRM THE LOCATION OF EXISTING SUBSURFACE UTILITIES WITH THE RESPECTIVE UTILITY COMPANIES AND COORDINATE WITH THE GRADING AND DRAINAGE PLAN. THE LOCATION OF PROPOSED SUBSURFACE UTILITIES LINES AND STRUCTURES PRIOR TO ANY EXCAVATION. NOTIFY THE LANDSCAPE ARCHITECT IF ANY CONFLICTS EXIST.
- NOTIFY THE OWNER IMMEDIATELY AND PRIOR TO THE INSTALLATION OF ANY PLANT MATERIALS IF SUB-GRADE SOIL CONDITIONS ARE DETERMINED TO PLANT GROWTH OR WILL INHIBIT DRAINAGE.
- IF ANY DISCREPANCY EXISTS BETWEEN THE PLANT COUNT SHOWN IN THE PLANTING SCHEDULE AND THE LANDSCAPE PLAN, THE PLAN SHALL TAKE PRECEDENCE.
- UNLESS OTHERWISE APPROVED IN WRITING, INSTALL VEGETATION DURING THE FOLLOWING PERIODS:
  - DECIDUOUS WOODY PLANTS: SEPTEMBER 15 TO MAY 15 OR WHENEVER TEMPERATURE IS ABOVE 40 DEGREES F.
  - EVERGREENS: AUGUST 15 TO SEPTEMBER 31 OR DURING MARCH 15 AND MAY 31 BEFORE THE START OF NEW GROWTH.
  - SEEDING: APRIL 15 TO MAY 15 AND AUGUST 15 TO OCTOBER 15.
- PLANTS SHALL BEAR THE SAME RELATIONSHIP TO FINISHED GRADE AS THEY BORE TO THE EXISTING GRADE IN THE NURSERY.
- INSTALL A 2" LAYER OF SHREPPED BARK MULCH IN ALL TREE PLANTING AREAS AND SHRUB BEDS, EXCEPT WHERE OTHERWISE NOTED IN PLANTING SCHEDULE. DO NOT TRUCK MULCH DIRECTLY AGAINST TRUNKS OF TREES. FORM AN EARTH COLLAR AROUND EACH PLANT OR SHRUB BED SO AS TO HOLD WATER AND MULCH. PROVIDE SUFFICIENT IRRIGATION FOR ALL PLANT MATERIALS TO MAINTAIN HEALTHY AND VIGOROUS CONDITION UNTIL THE PROJECT IS ACCEPTED BY THE OWNER.
- REMOVE TREE STAMPS AND OTHER PLANTING GUIDE MATERIALS, IF SPECIFIED, AFTER ONE YEAR FROM THE DATE OF PLANTING.
- ALL PLANT MATERIALS SHALL BE QUANTIFIED FOR A PERIOD OF ONE YEAR AFTER PLANTING FOLLOWING ACCEPTANCE BY THE OWNER. UPON COMPLETION OF THE ONE YEAR PLANT QUANTIFY PERIOD, SPECIFICALLY PLANT MATERIAL, CORRECT DEAD, DYING OR DISEASED AS DETERMINED BY THE OWNER, REPLACE PLANT WITH THE SAME SPECIES AND SIZE IMMEDIATELY DURING THE CURRENT GROWING SEASON OR AT THE BEGINNING OF THE NEXT GROWING SEASON.
- UPON COMPLETION OF PLANTING OPERATION CULTIVATE AND NEATLY FINISH ALL PLANTING AREAS.
- RESTORE ALL DISTURBED LAWN AREAS AND ALL AREAS NOT SPECIFICALLY IDENTIFIED HEREIN FOR OTHER IMPROVEMENTS WITH 4 INCHES OF TOPSOIL AND SEED. PROVIDE SUFFICIENT MULCH AND IRRIGATION TO ESTABLISH AND MAINTAIN HEALTHY TURF AND LAWN UNTIL ACCEPTED BY THE OWNER.
- THE MEADOW AREA AND BIOTRETION BASIN AREAS SHOWN HEREON SHALL BE COVERED WITH 4" MIN. THICK TOPSOIL LAYER AND PLANTED WITH NATIVE TREES AND SHRUBS IN ACCORDANCE WITH THIS PLAN. THE ENTIRE AREA SHALL BE SEEDED IN ACCORDANCE WITH THE SEEDING SCHEDULE FOR MEADOW AND BIOTRETION BASIN. SEE SHEET 05.02 FOR DETAILS.
- THE LOCATION OF THE NEW EVERGREEN TREES ALONG THE PROPERTY LINE ARE APPROXIMATELY SHOWN. CONTRACTOR SHALL LOCATE TREES WITHIN EXISTING CLEARING AREAS TO MINIMIZE DISTURBANCE OF EXISTING VEGETATION.

SEE LANDSCAPE NOTE NO. 13

**Seeding Schedule For Biotretion Basin and New Meadow Areas**

- SITE PREPARATION**
- DEBRISATE EXISTING INVASIVE SHRUBS AND OTHER VEGETATION WITH APPROVED HERBICIDE.
  - PREPARE AREA SURFACE SHALL BE READERABLE TO PREPARE 2" TOPSOIL LAYER, REMOVE ALL DEBRIS, ROOTS, CLUMPS OR OTHER UNDESIRABLE MATERIALS.
  - APPLY 4" TOPSOIL LAYER OF SOIL AS SEEDS TO ALL DISTURBED AREAS.
  - APPLY 1" SEED MIX BELOW AT A RATE OF TOTAL 1.5 LBS ACRE OF NATIVE GRASS SEED AND WARM SEASON FORBS COMBINATION TO DISTURBED AREAS.
  - SEED TO BE MICROCASTED TO PREPARED SEEDBED. AREA TO BE PROTECTED WITH A 2" LAYER OF TOPSOIL WITH TREES OR A MULCH (100 LBS ACRES) TO PROTECT THE SEEDS WITH SOIL. FOLIAGE SHOULD BE APPLIED. APPLY A LIGHT LAYER OF 2" SAND MULCH (100 LBS ACRES) TO PROTECT THE AREA. WATER THE SEEDS IN THE DISTURBED AREA IMMEDIATELY.
  - CONTRACTOR SHALL BE RESPONSIBLE FOR MONITORING THE SITE. IN THE EVENT OF DROUGHT COORDINATING WITH THE FIRST GRADING AND BIOTRETION CONTRACTOR. IT IS THE CONTRACTOR'S RESPONSIBILITY TO REPLACE ANY PLANTS THAT DIE AS A RESULT OF WEATHER OR INCAPABILITY OF THE CONTRACTOR.
- IDEAL PLANTING DATES: APRIL 15 TO SEPTEMBER 15.**

**SEEDING SEASON MAINTENANCE**

**FIRST GROWING SEASON**

- WHEN NORMAL MEADOW VEGETATION REACHED 17"-24" FROM THE MEADOW GRASS USING A BRUSH-HOOKED OR STRING TRIMMER TO A HEIGHT OF NO LESS THAN 10" TO REDUCE COMPETITION BY FAST-GROWING WEEDS. A LAWN MOWER IS NOT RECOMMENDED TO PREVENT NESTS BEING BLOWN FROM BEING BLENDED.
- MOWING OF MEADOW AREA SHOULD BE DONE TWICE IN THE FIRST YEAR, A THIRD MOWING IS PREFERRED. TRIMMING SHOULD CEASE BY NOVEMBER.

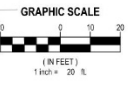
**SECOND GROWING SEASON AND BEYOND**

- A MAINTENANCE OF ONCE A YEAR MOWING IS RECOMMENDED FOLLOWING THE METHODS AND TIMES NOTED ABOVE.

COMMON NAME	BOTANICAL NAME	PERCENTAGE (LBS/ACRE)
PERENNIAL GRASS PA ECOTYPE	SCORPIONGRASS (L.) VARIETY PA ECOTYPE	20
PERENNIAL GRASS PA ECOTYPE	SPRING WINDGRASS PA ECOTYPE	20
PERENNIAL GRASS PA ECOTYPE	PANICUM MISTLETTOWN PA ECOTYPE	15
PERENNIAL GRASS PA ECOTYPE	PERENNIAL GRASS (L.) VARIETY PA ECOTYPE	10
PERENNIAL GRASS PA ECOTYPE	PERENNIAL GRASS (L.) VARIETY PA ECOTYPE	5
PERENNIAL GRASS PA ECOTYPE	PERENNIAL GRASS (L.) VARIETY PA ECOTYPE	3
PERENNIAL GRASS PA ECOTYPE	PERENNIAL GRASS (L.) VARIETY PA ECOTYPE	2
PERENNIAL GRASS PA ECOTYPE	PERENNIAL GRASS (L.) VARIETY PA ECOTYPE	1
PERENNIAL GRASS PA ECOTYPE	PERENNIAL GRASS (L.) VARIETY PA ECOTYPE	1

811-1-800-272-1000  
 One Call, New Jersey  
**Call811**  
 Know what's below. Call before you dig  
 www.NJ-Call811.com

ESSEX AVENUE  
 NJ STATE HIGHWAY 27  
 (55' WIDE R.O.W. - PER TAX MAP)



**H2M Architects & Engineers, Inc.**  
 119 Cherry Hill Road, Suite 110  
 Parsippany, NJ 07054  
 862.207.5900 • www.h2m.com  
 NJ Architecture Certificate of Authorization No. 21A020102200  
 NJ Engineering Certificate of Authorization No. 26A03202200

CONSULTANTS:

MARK	DATE	DESCRIPTION

MARK	DATE	DESCRIPTION

**RICHARD B. SCHOMMER, JR. P.E.**  
 LICENSED PROFESSIONAL ENGINEER IN THE STATE OF NEW JERSEY  
 LICENSE NO. 26A03202200  
 REGISTERED PROFESSIONAL LANDSCAPE ARCHITECT IN THE STATE OF NEW JERSEY  
 LICENSE NO. 21A020102200

DESIGNED BY	CHECKED BY	DATE	SCALE
RBS	JTM	MAR 12, 2024	AS SHOWN

**Borough of Metuchen**  
 EMERGENCY SERVICES CENTER



**1 SAFETY PLACE**  
**METUCHEN NJ 08840**  
**BOROUGH OF METUCHEN**  
**COUNTY OF MIDDLESEX**  
**NEW JERSEY**

STATUS: **90% - NFC**

SHEET TITLE: **LANDSCAPE PLAN**

DRAWING NO: **CL 100.00**









**H2M Architects & Engineers, Inc.**  
 119 Cherry Hill Road, Suite 110  
 Parsippany, NJ 07654  
 862.267.5900 • www.h2m.com

NJ Architecture Certificate of Authorization No.: 21AC00040200  
 NJ Engineering Certificate of Authorization No.: 240A00025500

CONSULTANTS:

MARK	DATE	DESCRIPTION
00	MAR 6, 2024	90% - NFC

DESIGNED BY: **DENNIS A. ROSS, R.A.**  
REGISTERED ARCHITECT IN NJ  
MEMBER OF THE BOARD OF ARCHITECTS PROFESSIONAL ENGINEERS  
THE BOARD OF ARCHITECTS PROFESSIONAL ENGINEERS IS A BOARD OF COUNTY OFFICIALS

DESIGNED BY	DRAWN BY	CHECKED BY	REVIEWED BY
DJP	SKM	KMP	JBL
PROJECT No:	DATE:	SCALE:	
BOME2201	MAR 12, 2024	AS SHOWN	

CLIENT  
**Borough of Metuchen**

EMERGENCY SERVICES CENTER



1 SAFETY PLACE  
 METUCHEN, NJ 08840  
 BOROUGH OF METUCHEN  
 COUNTY OF MIDDLESEX  
 NEW JERSEY

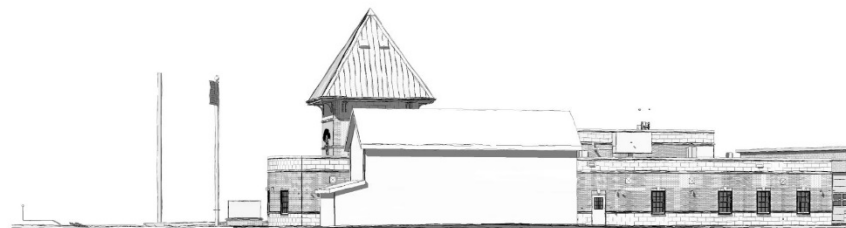
STATUS: **90% - NFC**

SHEET TITLE:  
**SIGHT LINE PERSPECTIVES**

DRAWING No.: **A 710.00**



SITE LINE PERSPECTIVE - 500' WEST



SITE LINE PERSPECTIVE - 500' EAST



SITE LINE PERSPECTIVE - 200' WEST



SITE LINE PERSPECTIVE - 200' EAST



SITE LINE PERSPECTIVE - 100' WEST



SITE LINE PERSPECTIVE - 100' EAST