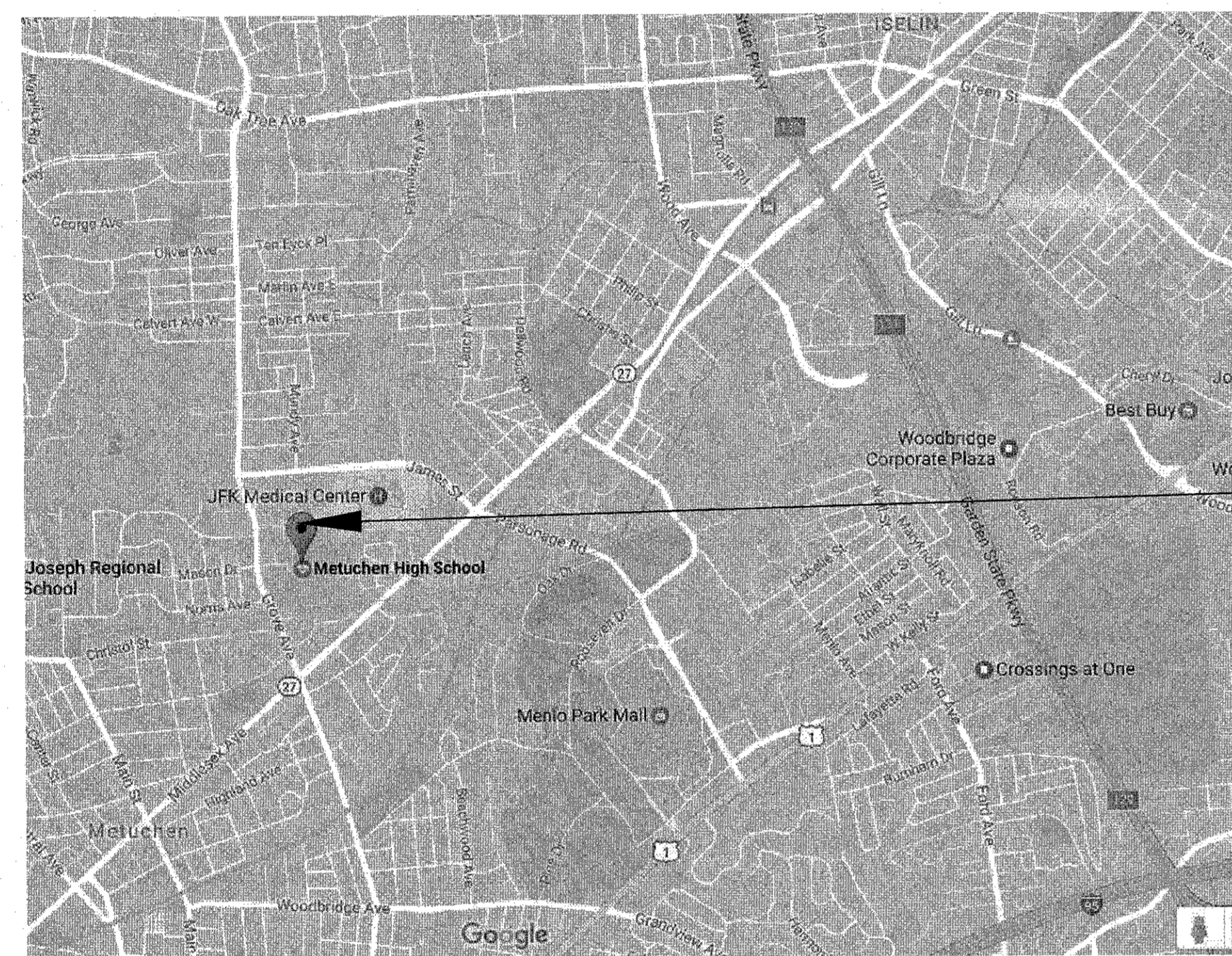


METUCHEN PUBLIC SCHOOL DISTRICT

ADDITION AND SERVICE BUILDING AT METUCHEN HIGH SCHOOL

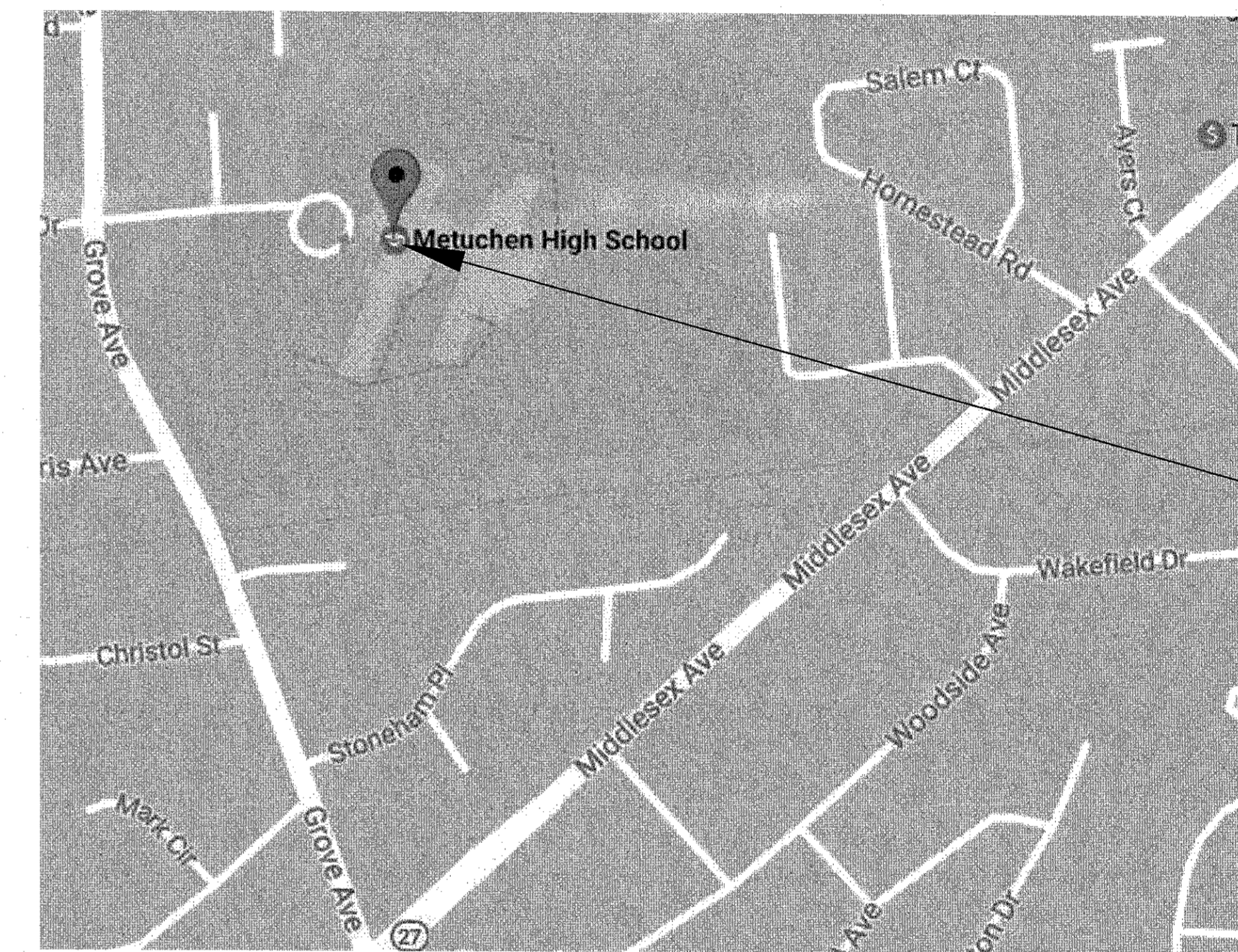
400 GROVE AVE.,
METUCHEN, NJ 08840



VICINITY MAP
N.T.S.

LIST OF DRAWINGS

TITLE SHEETS
T00 VICINITY MAP, SITE MAP, & LIST OF DRAWINGS
CIVIL
C10 SITE PLAN
ARCHITECTURAL
A01 OVERALL FIRST FLOOR PLAN
A11 FIRST FLOOR FURNITURE & EQUIPMENT PLAN



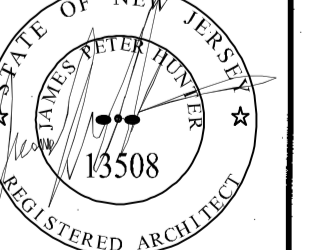
SITE MAP
N.T.S.

NOT FOR CONSTRUCTION

NJDOE STATE PROJECT NO.: TBD

REV	REVISION DESCRIPTION	BY	DATE
B	ISSUED FOR METUCHEN PLANNING BOARD	RPS	26 JAN 22
A	ISSUED FOR NJDOE SCHEMATIC SUBMISSION	RPS	23 NOV 21

EI Associates
ARCHITECTS & ENGINEERS, PA
8 RIDGEDALE AVENUE-CEDAR KNOLLS NJ 07927-4933, 775.7777



JAMES P. HUNTER, AIA	REGISTERED ARCHITECT LICENSE NO. NJ 13508	ARCHITECTURE
SCALE: AS NOTED	PROJECT: METUCHEN PUBLIC SCHOOL DISTRICT	EIA DRAWING NO.
DRAWN BY: [Signature]	ADDITION AND SERVICE BUILDING AT METUCHEN HIGH SCHOOL	T00
DESIGNED BY: [Signature]	METUCHEN NEW JERSEY	CLIENT DWG. NO.
CHECKED BY: [Signature]	TITLE: VICINITY MAP, SITE MAP, & LIST OF DRAWINGS	EIA PROJECT NO. ESB743.00
APPROVED BY: [Signature]		
PROJECT MANAGER:		

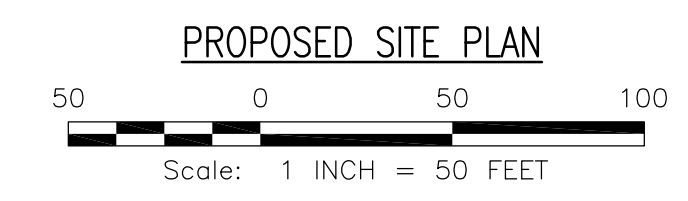
[Signature]
President, Board of Education

[Signature]
Superintendent



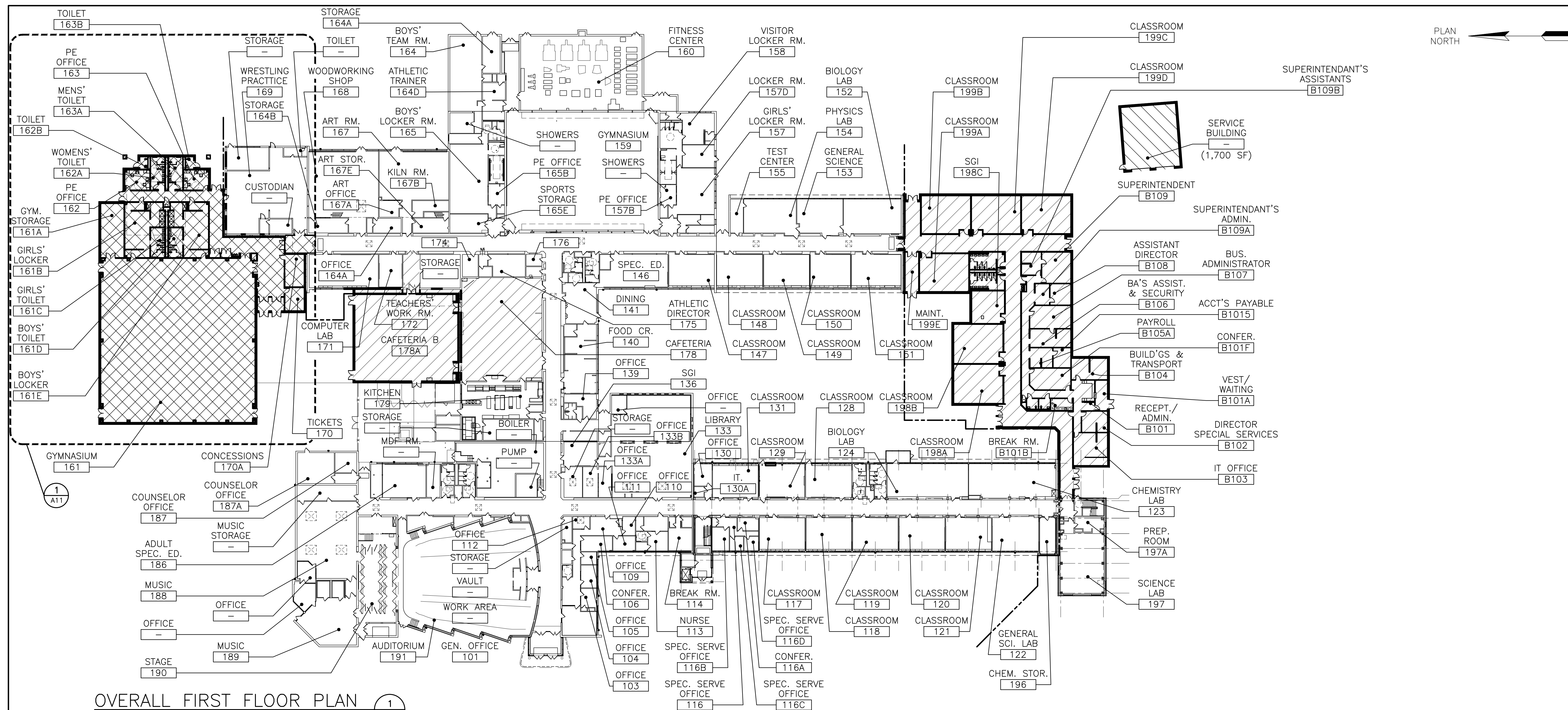
KEYED WORK NOTES:

- 1 NEW REPLACEMENT TURF FIELD



NUMBER OF NEW PARKING STALLS = 52

NJDOE STATE PROJECT NO.: TBD			
B	ISSUED FOR METUCHEN PLANNING BOARD	RPS	26 JAN 22
A	ISSUED FOR NJDOE SCHEMATIC SUBMISSION	RPS	23 NOV 21
REV	REVISION DESCRIPTION	BY	DATE
EI Associates ARCHITECTS & ENGINEERS, PA 8 RIDGEDALE AVENUE CEDAR KNOLLS NJ 07927-9753-7777			
GAETANO P. CIPRIANO		PROFESSIONAL ENGINEER NJ LICENSE No. 32175	CIVIL
SCALE	AS NOTED	PROJECT	EIA DRAWING NO.
DRAWN BY:		METUCHEN PUBLIC SCHOOL DISTRICT	C10B
DESIGNED BY:		ADDITIONS AND ALTERATIONS AT METUCHEN HIGH SCHOOL	
CHECKED BY:		METUCHEN NEW JERSEY	
APPROVED BY:		TITLE	
PROJECT MANAGER:		SITE PLAN	CLIENT DWG. NO. - EIA PROJECT NO. ESB743.00

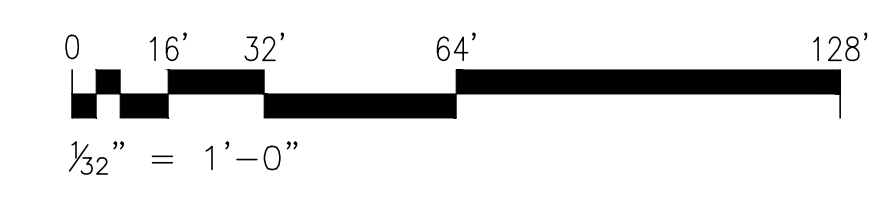


OVERALL FIRST FLOOR PLAN 1/32" = 1'-0" A01

GENERAL LEGEND

- EXISTING WALL/PARTITION TO REMAIN U.O.N.
- EXISTING WALL/PARTITION TO BE REMOVED
- NEW WALL/PARTITION
- EXISTING DOOR & FRAME TO REMAIN
- EXISTING DOOR & FRAME TO BE REMOVED
- NEW DOOR & FRAME
- EXISTING AREAS TO REMAIN
- NEW ADDITION - SEE SHEET A11 FOR FURNITURE AND EQUIPMENT LAYOUTS
- NEW SERVICE BUILDING
- NEW ADDITION/RENOVATION WORK UNDER SEPARATE NJ DOE SUBMISSION

NOT FOR CONSTRUCTION



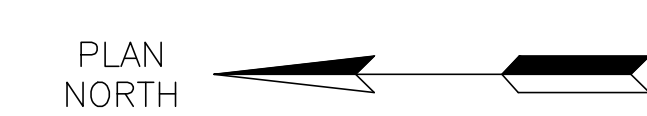
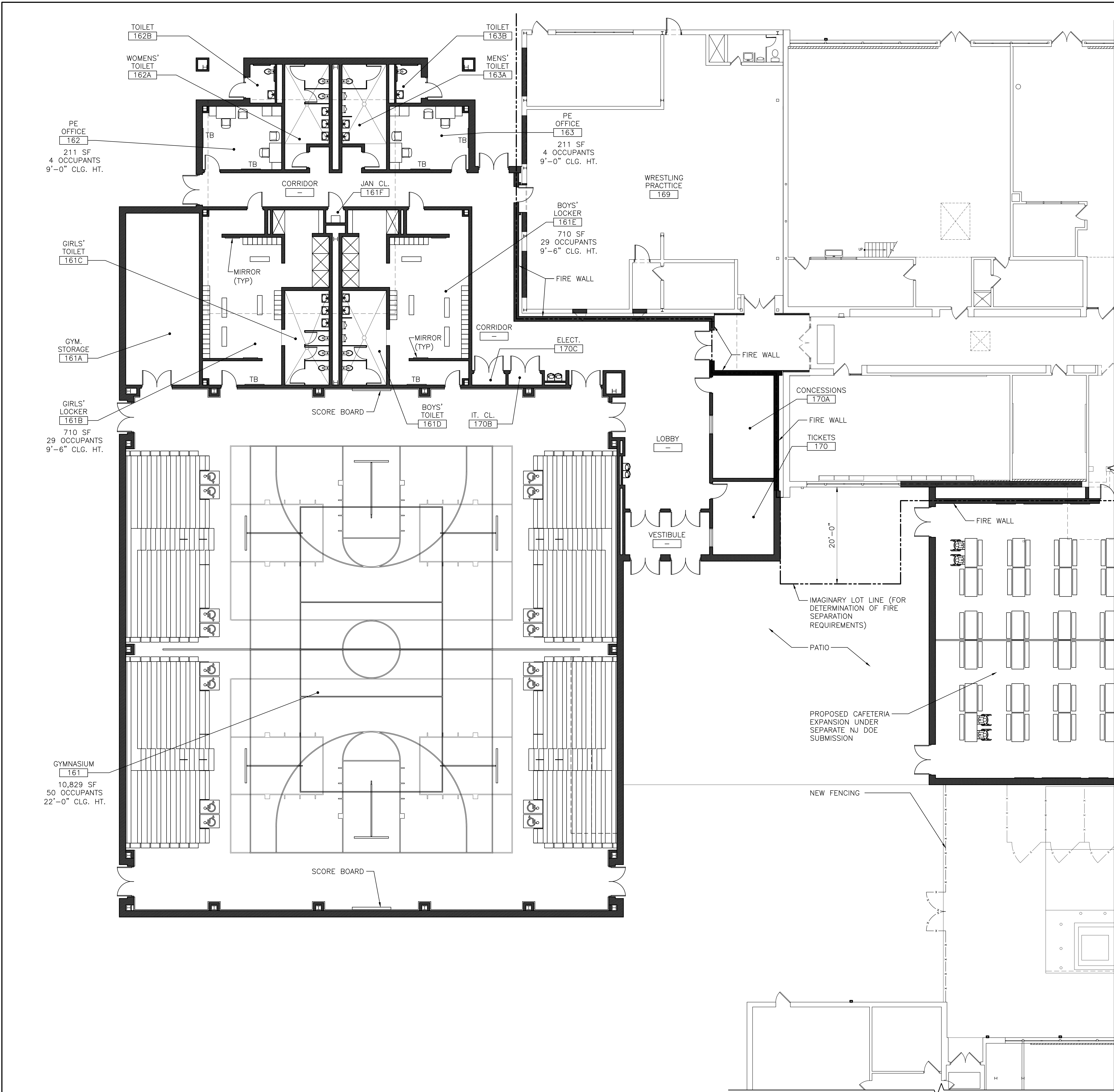
NJDOE STATE PROJECT NO.: TBD

REV	REVISION DESCRIPTION	BY	DATE
B	ISSUED FOR METUCHEN PLANNING BOARD	RPS	26 JAN 22
A	ISSUED FOR NJDOE SCHEMATIC SUBMISSION	RPS	23 NOV 21

EI Associates
 ARCHITECTS & ENGINEERS, PA
 8 RIDGEDALE AVENUE CEDAR KNOLLS NJ 07927-973.775.7777

JAMES P. HUNTER, AIA REGISTERED ARCHITECT LICENSE NO. NJ 13508 ARCHITECTURE

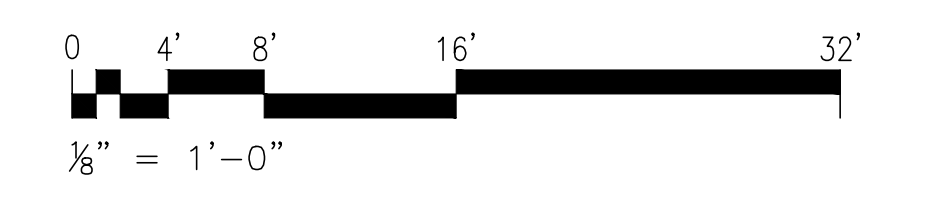
SCALE AS NOTED	PROJECT METUCHEN PUBLIC SCHOOL DISTRICT	EIA DRAWING NO.
DRAWN BY: [Signature]	ADDITION AND SERVICE BUILDING AT METUCHEN HIGH SCHOOL	A01
DESIGNED BY: [Signature]	METUCHEN NEW JERSEY	CLIENT DWG. NO. -----
CHECKED BY: [Signature]	TITLE OVERALL FIRST FLOOR PLAN	EIA PROJECT NO. ES8743.00
APPROVED BY: [Signature]		
PROJECT MANAGER:		



GENERAL LEGEND

- EXISTING WALL/PARTITION TO REMAIN U.O.N.
- EXISTING WALL/PARTITION TO BE REMOVED
- NEW WALL/PARTITION
- EXISTING DOOR & FRAME TO REMAIN
- EXISTING DOOR & FRAME TO BE REMOVED
- NEW DOOR & FRAME
- BARRIER FREE ACCESSIBLE STATION
- TACK BOARD

NOT FOR CONSTRUCTION



NJDOE STATE PROJECT NO.: TBD

REV	REVISION DESCRIPTION	BY	DATE
B	ISSUED FOR METUCHEN PLANNING BOARD	RPS	26 JAN 22
A	ISSUED FOR NJDOE SCHEMATIC SUBMISSION	RPS	23 NOV 21

EI Associates
 ARCHITECTS & ENGINEERS, PA
 8 RIDGEDALE AVENUE • CEDAR KNOLLS NJ 07927 • 973.775.7777

JAMES P. HUNTER, AIA REGISTERED ARCHITECT LICENSE NO. NJ 13508 ARCHITECTURE

SCALE	AS NOTED	PROJECT	METUCHEN PUBLIC SCHOOL DISTRICT	EIA DRAWING NO.
DRAWN BY:	SK	DESIGNED BY:	SK	A11
CHECKED BY:	SK	PROJECT	METUCHEN HIGH SCHOOL	
APPROVED BY:	SK	TITLE	FIRST FLOOR FURNITURE & EQUIPMENT PLAN	CLIENT DWG. NO.
PROJECT MANAGER:	SK			EIA PROJECT NO. ES8743.00

FIRST FLOOR FURNITURE & EQUIPMENT PLAN
 1/8" = 1'-0" **1** **A11**