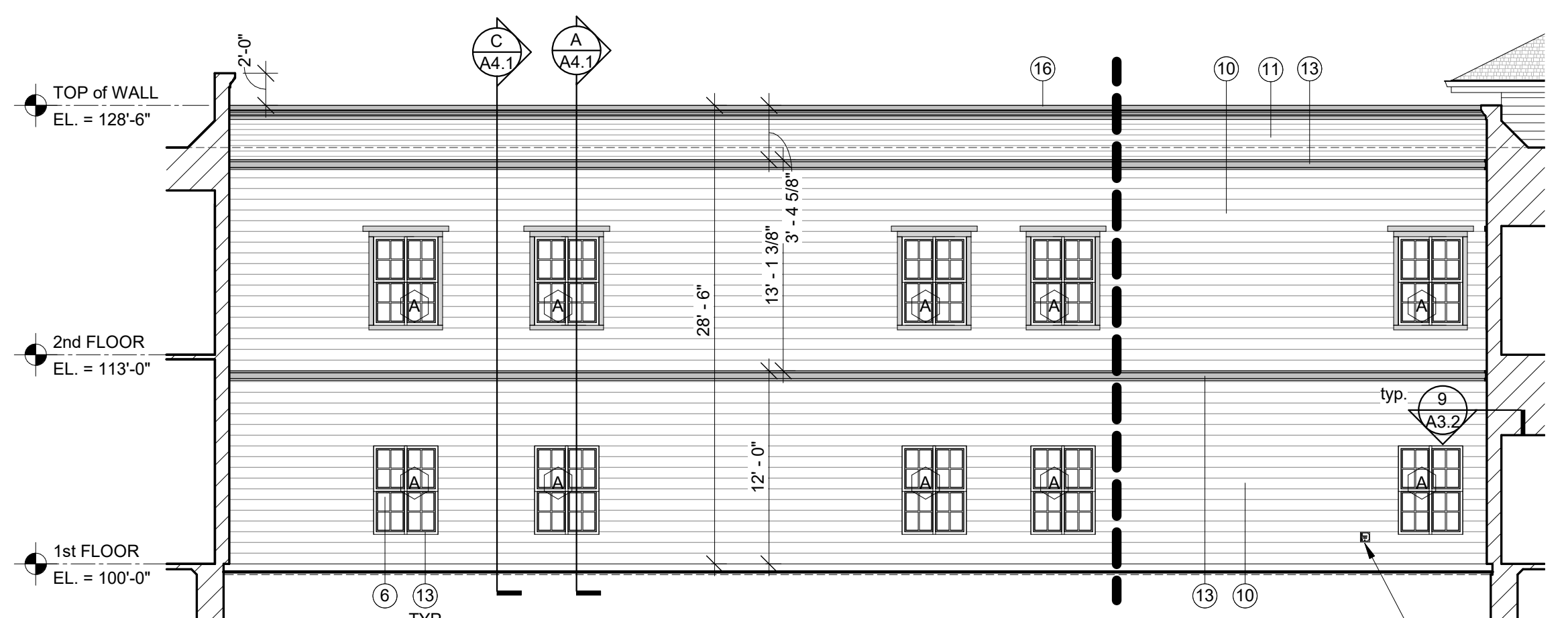
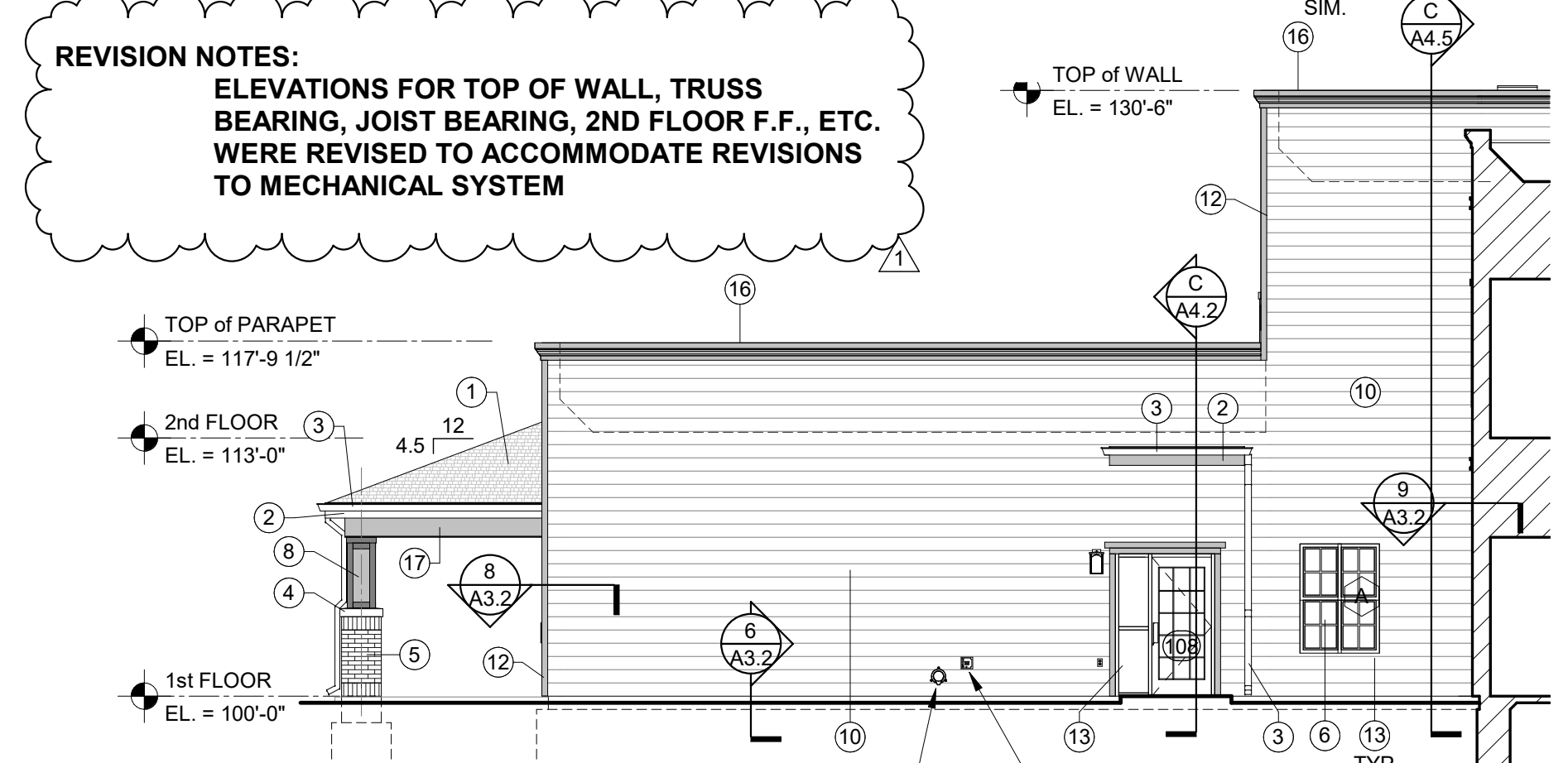


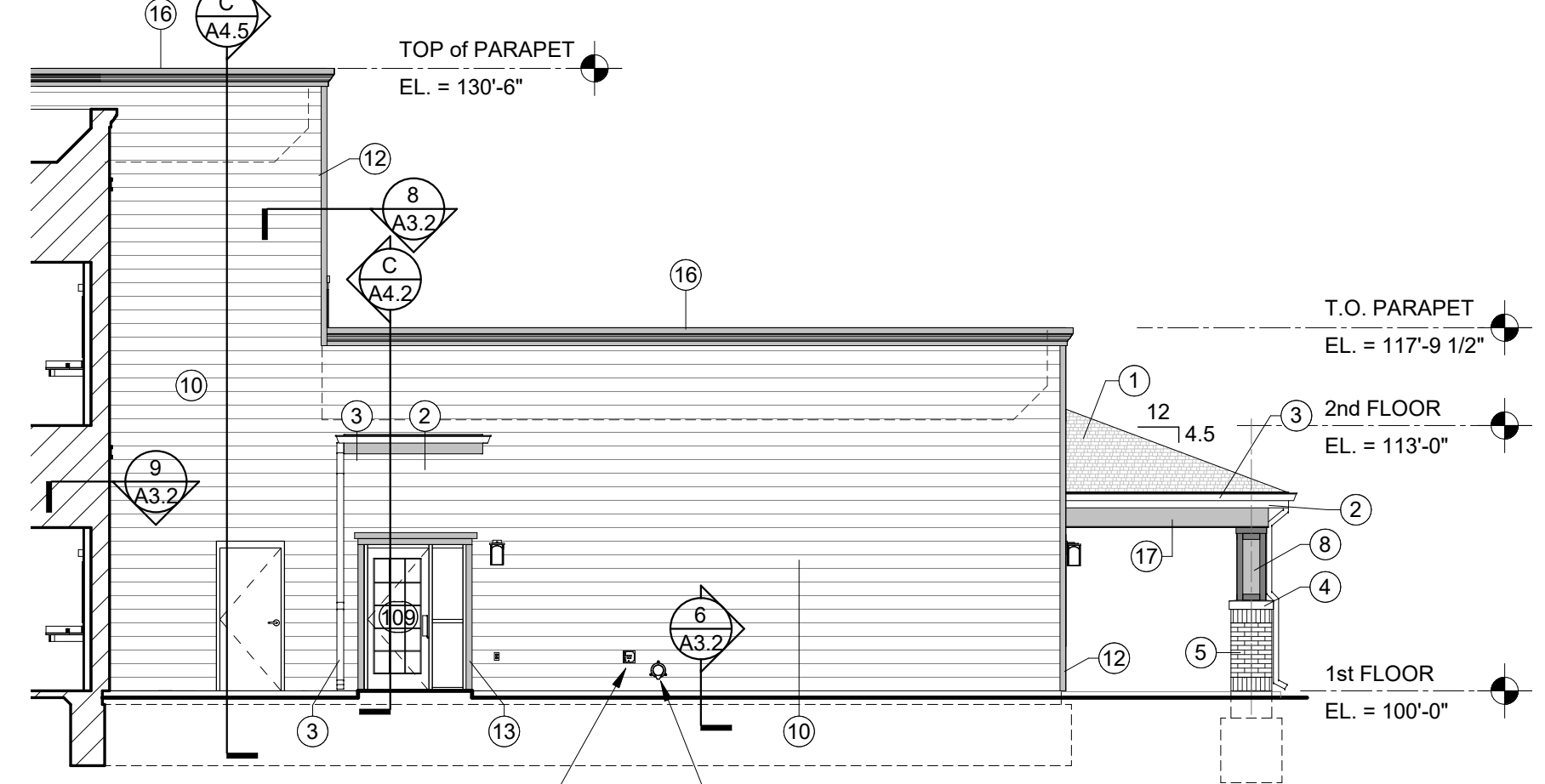
A NORTH WING SOUTH ELEVATION
1/8" = 1'-0"



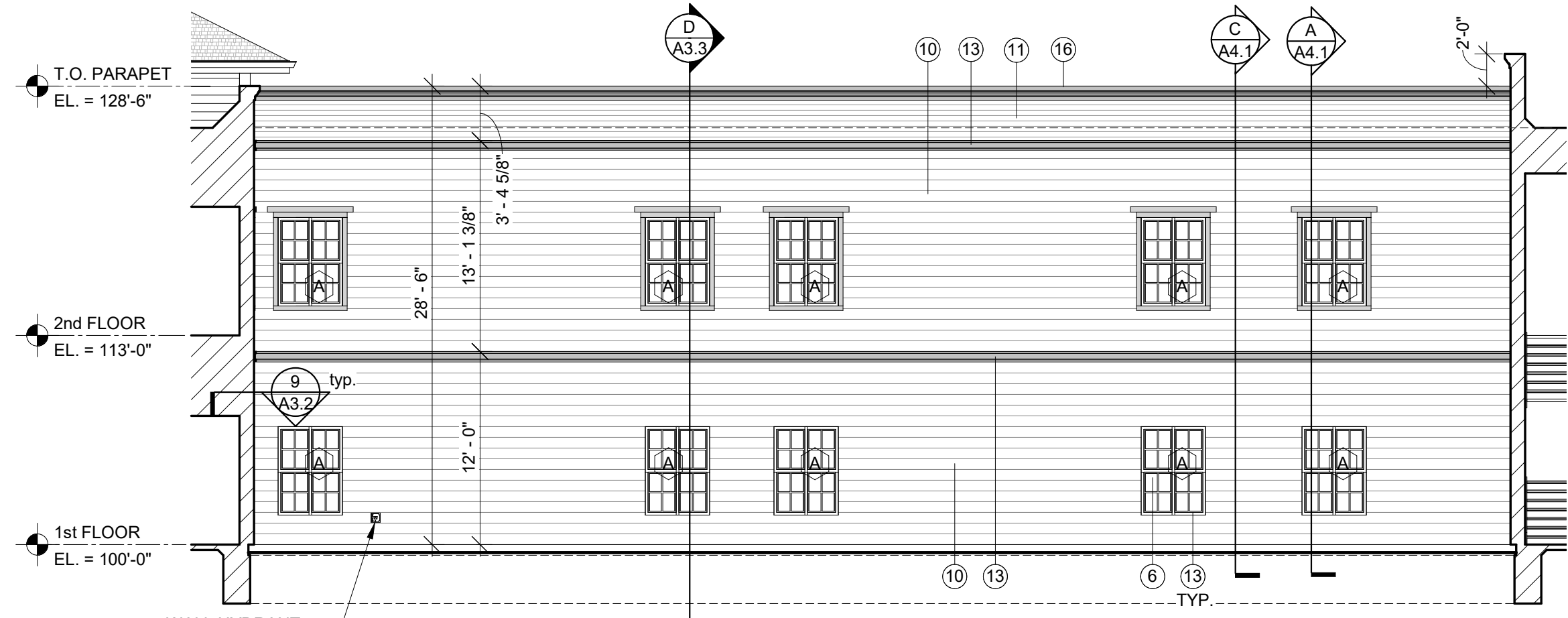
B NORTH WING EAST ELEVATION
1/8" = 1'-0"



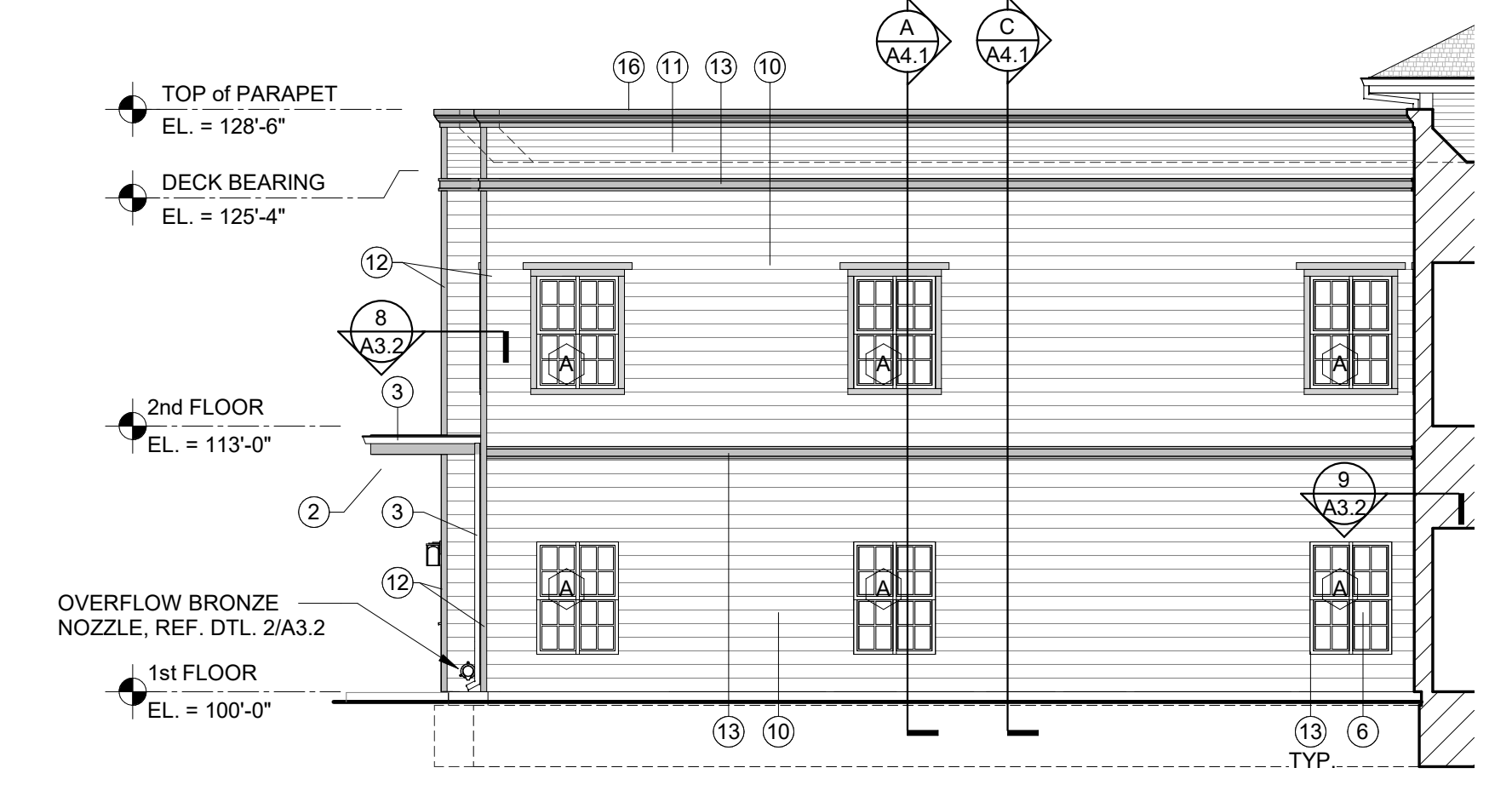
C CENTER CORE NORTH ELEVATION
1/8" = 1'-0"



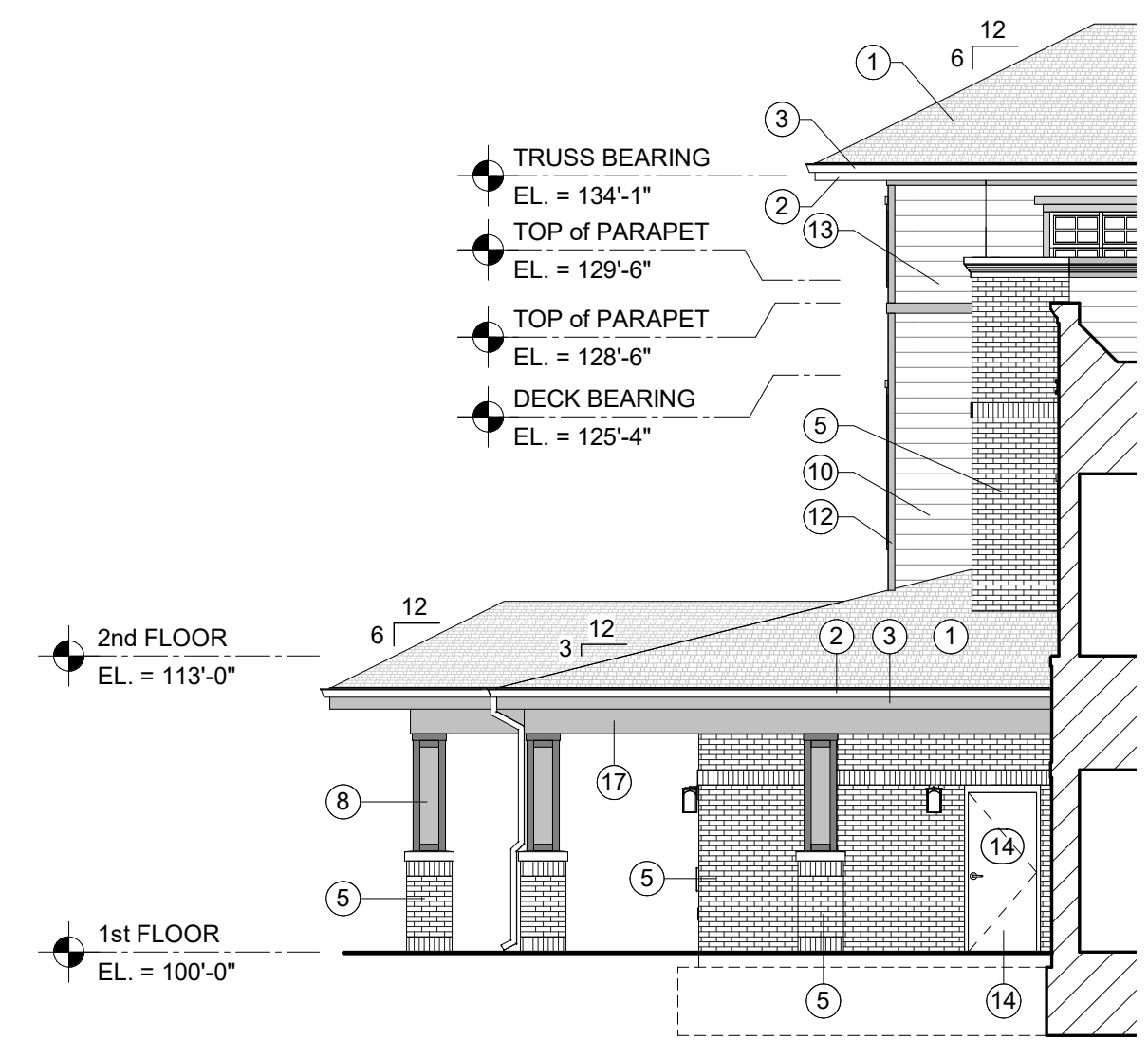
D CENTER CORE SOUTH ELEVATION
1/8" = 1'-0"



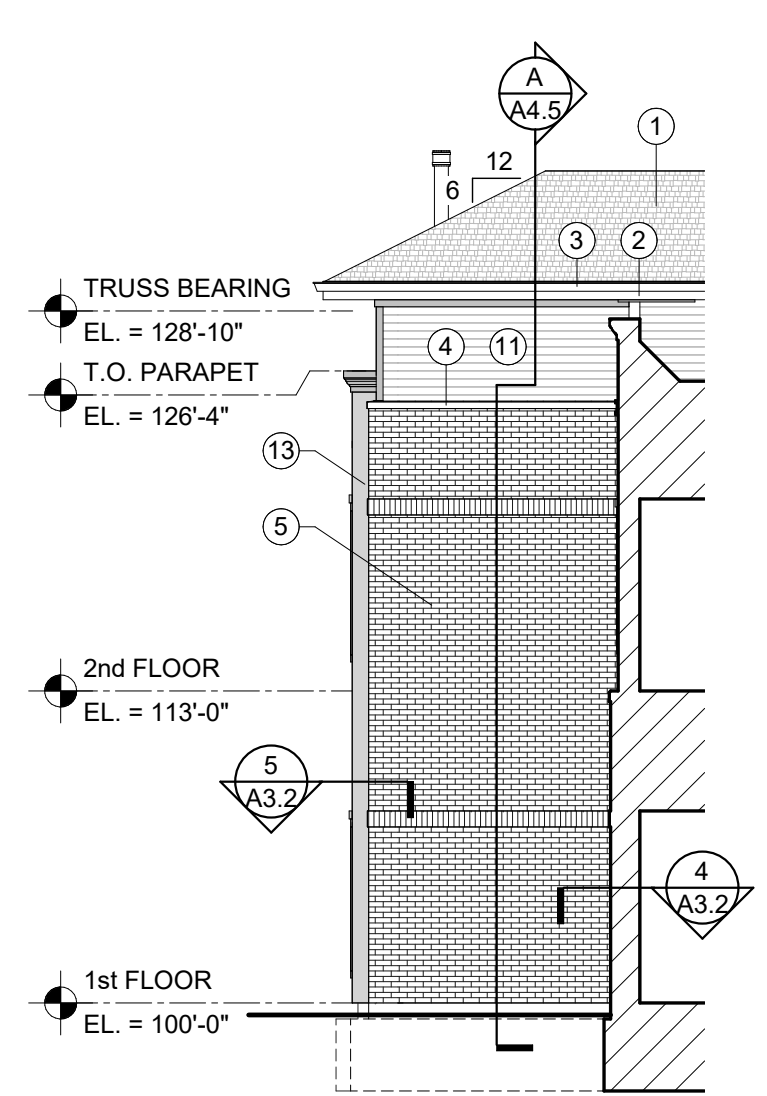
E SOUTH WING EAST ELEVATION
1/8" = 1'-0"



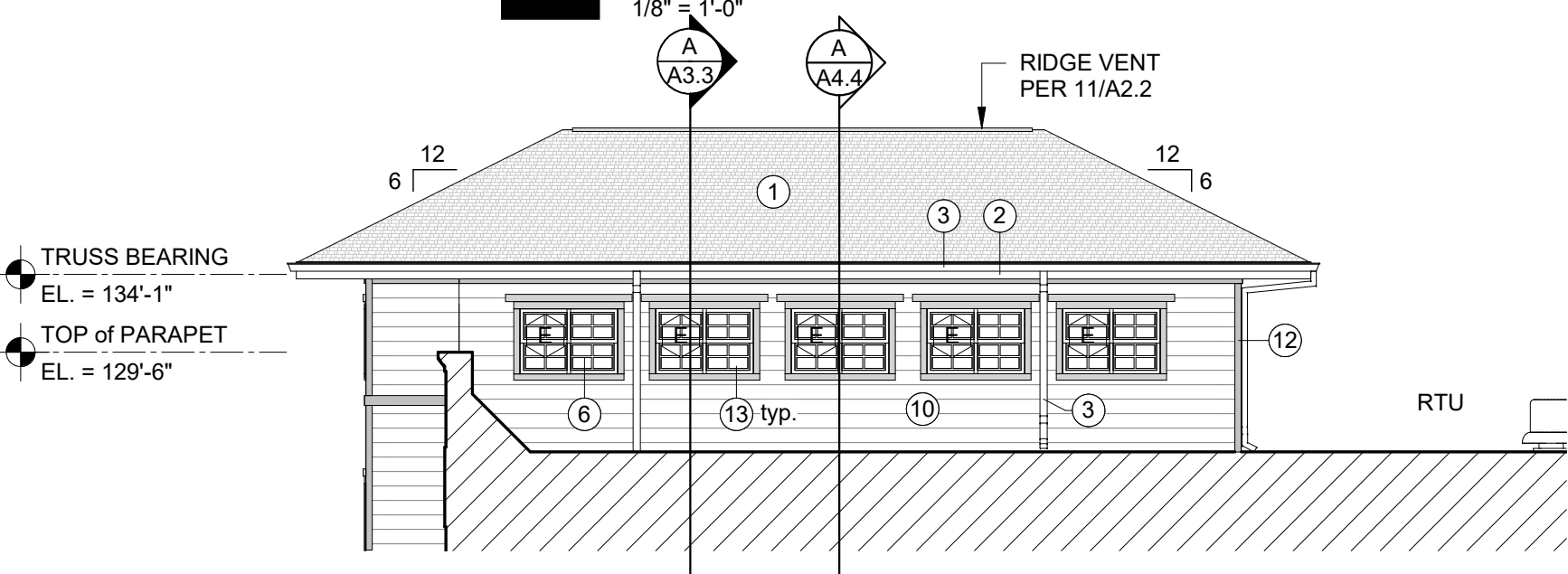
F SOUTH WING NORTH ELEVATION
1/8" = 1'-0"



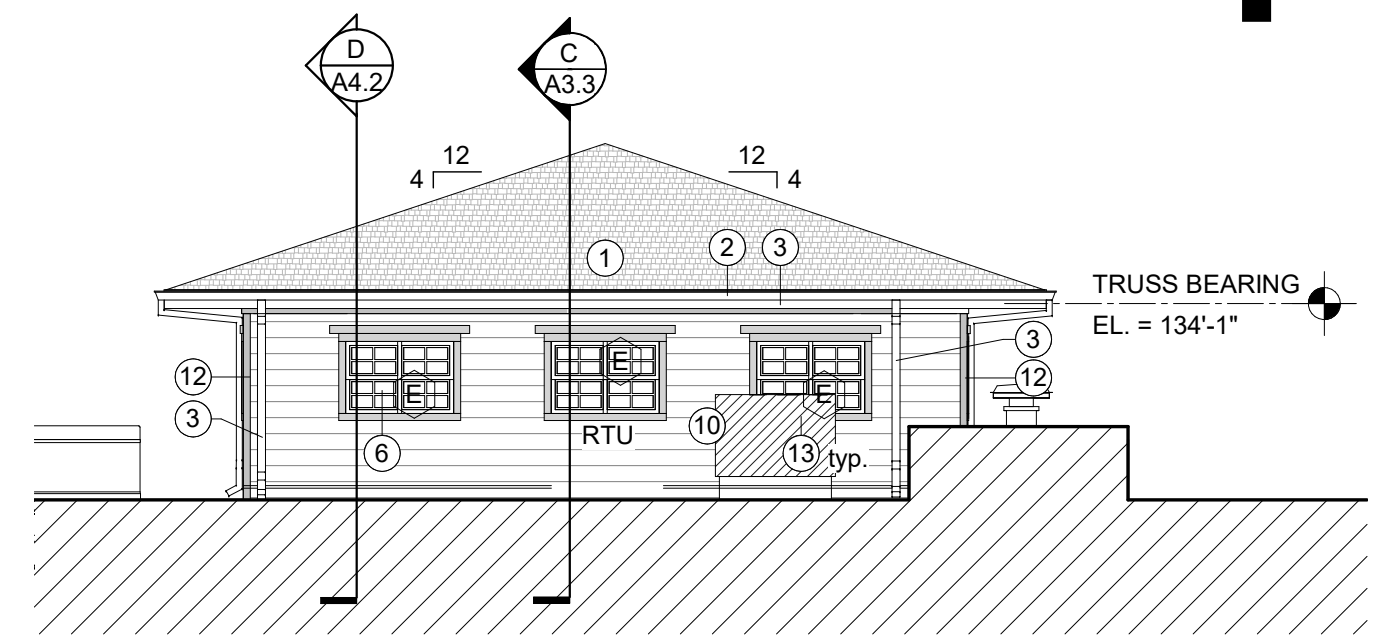
G CENTER CORE SOUTH ELEVATION
1/8" = 1'-0"



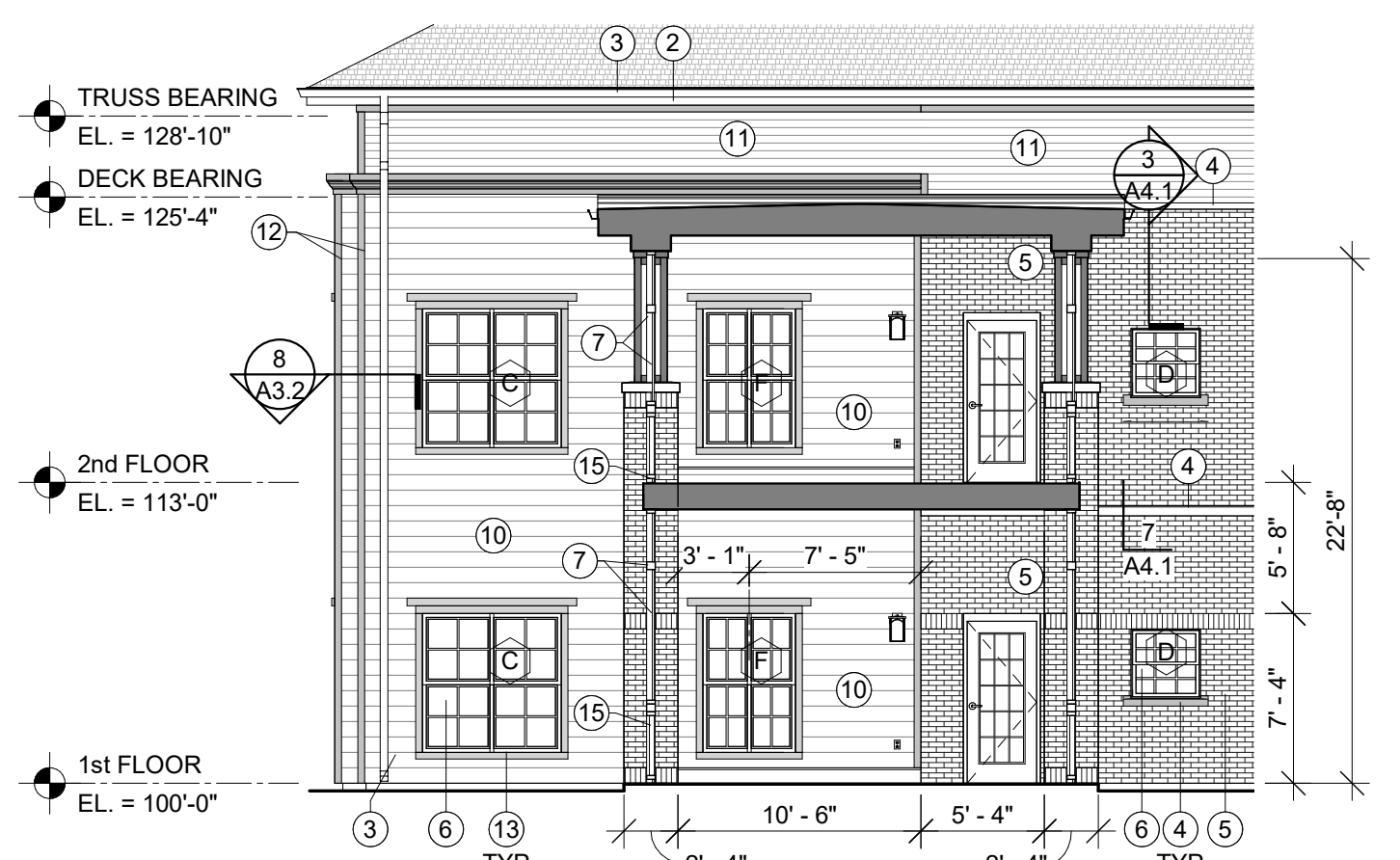
H ELEVATION
1/8" = 1'-0"



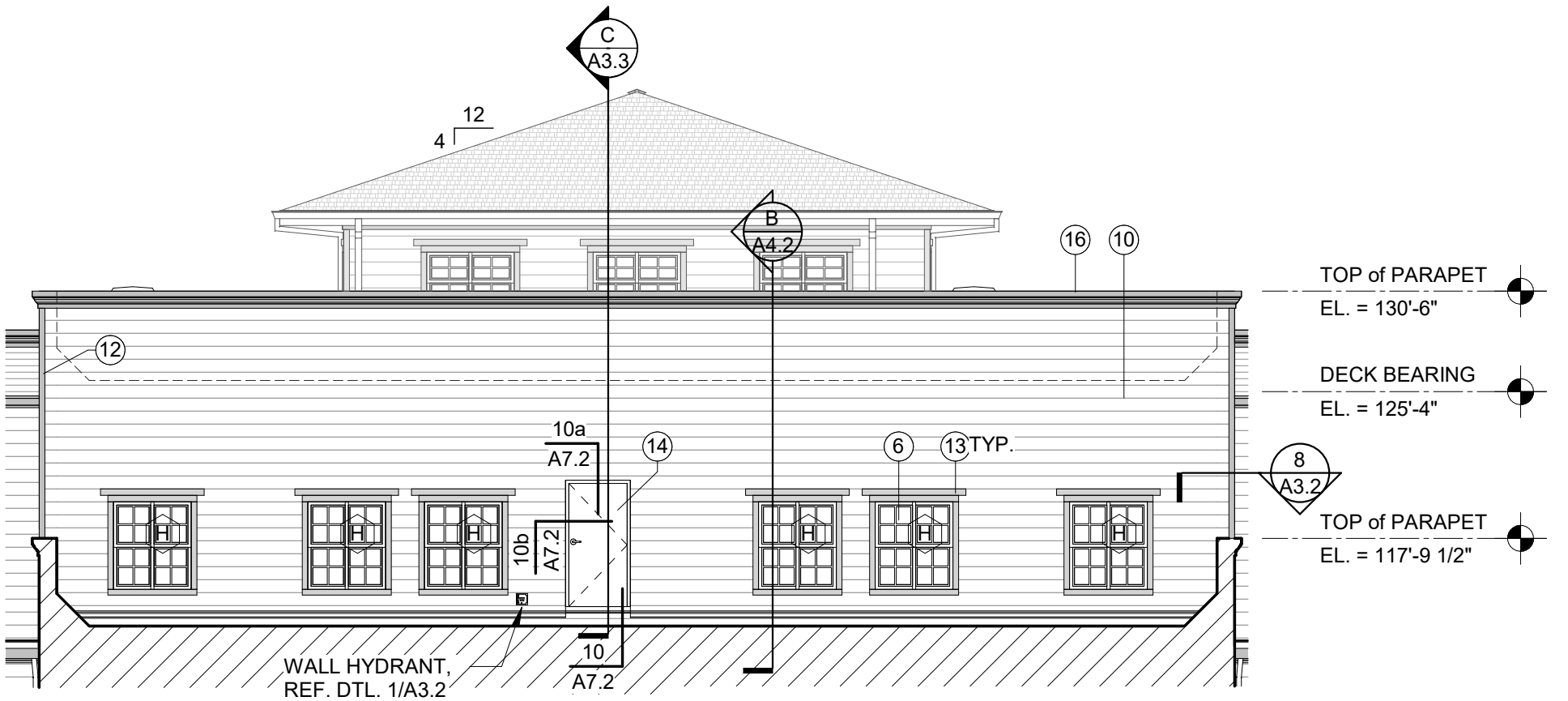
J CUPOLA SOUTH ELEVATION
1/8" = 1'-0"



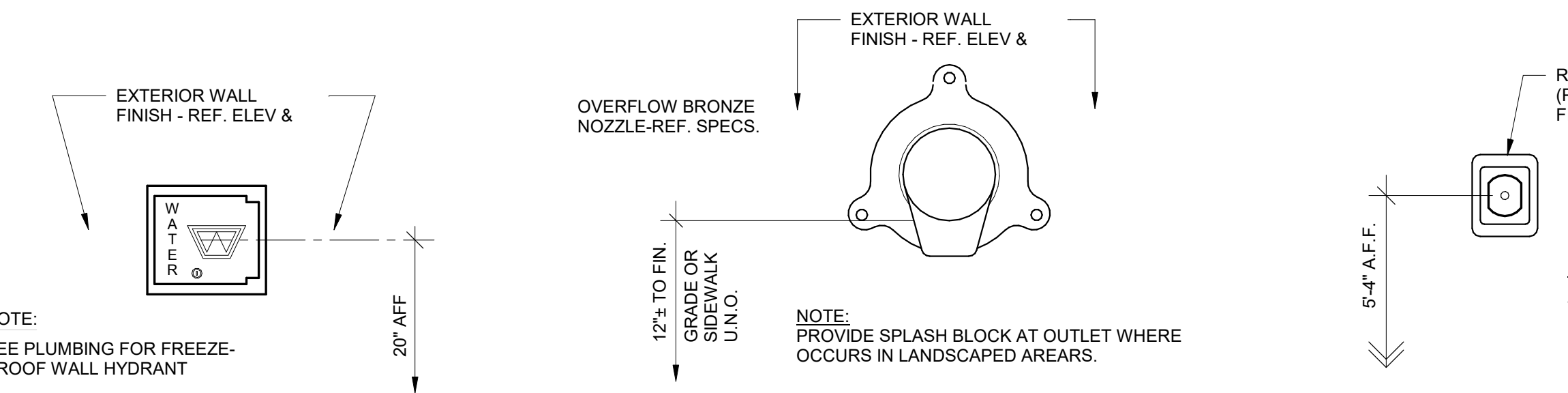
K CUPOLA EAST ELEVATION
1/8" = 1'-0"



M SCREEN PORCH BUILDING ELEVATION
1/8" = 1'-0"



L CENTER CORE EAST ELEVATION
1/8" = 1'-0"



1 WALL HYDRANT
1 1/2" = 1'-0"

2 OVERFLOW PIPE
1 1/2" = 1'-0"

3 FIREMAN'S KNOX BOX
1 1/2" = 1'-0"

4 TRIM at INSIDE CORNER
1 1/2" = 1'-0"

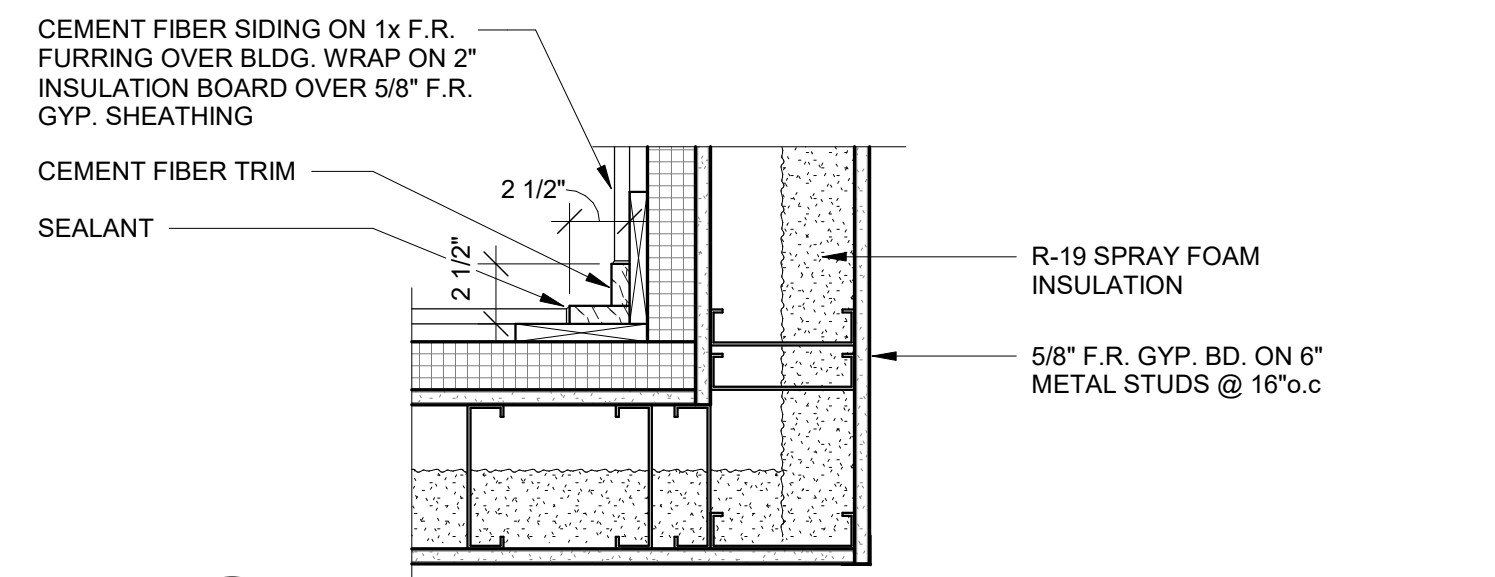
5 BRICK at SIDING CORNER
1 1/2" = 1'-0"

6 HARDSCAPE CLEARANCE
1 1/2" = 1'-0"

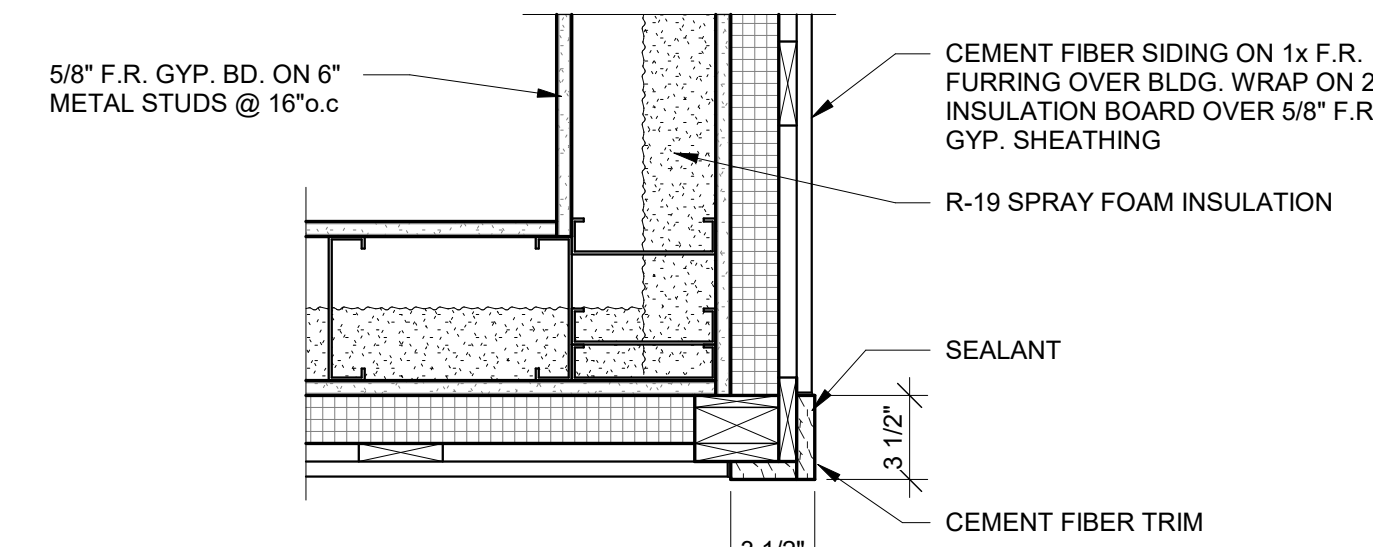
REVISION NOTES:
ELEVATIONS FOR TOP OF WALL, TRUSS BEARING, JOIST BEARING, 2ND FLOOR F.F., ETC. WERE REVISED TO ACCOMMODATE REVISIONS TO MECHANICAL SYSTEM

MATERIAL LEGEND

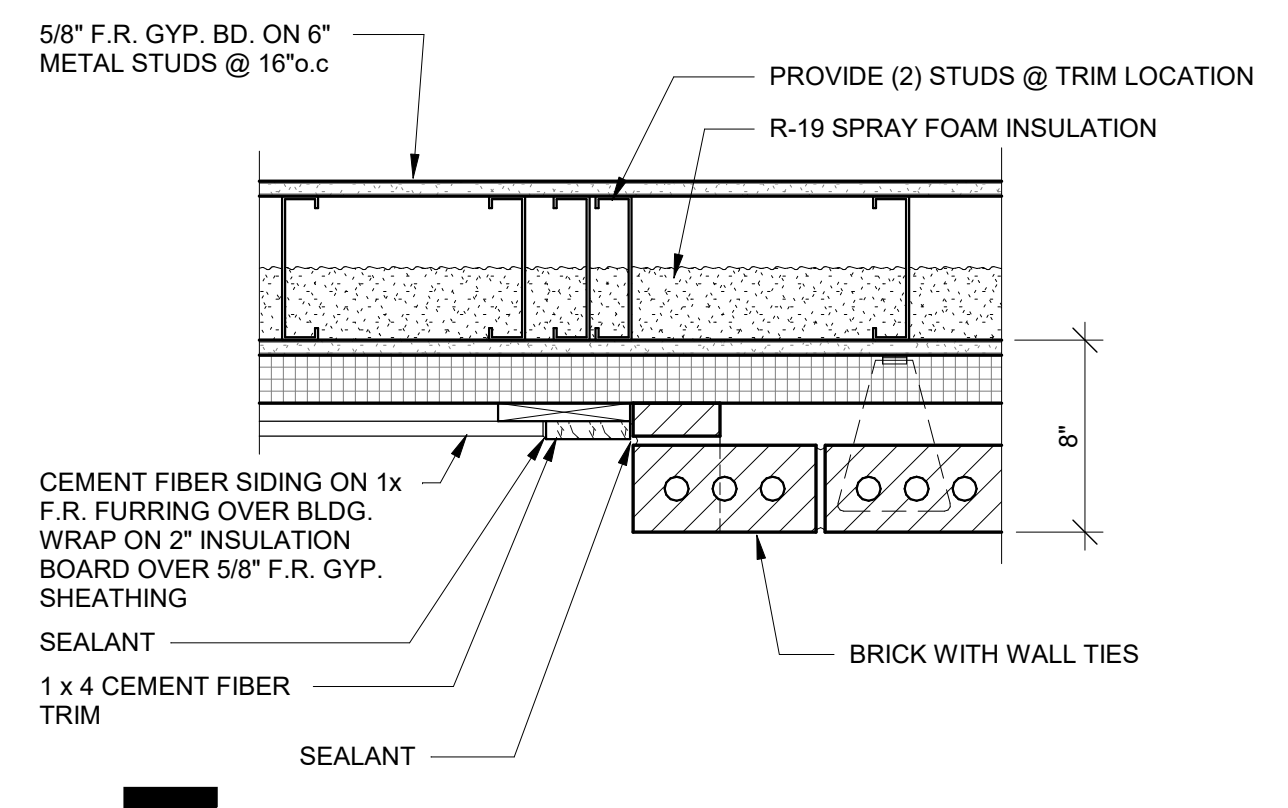
- ARCHITECTURAL COMPOSITION SHINGLES -
- PRE-FINISHED ALUMINUM FASCIA - WHITE
- PRE-FINISHED ALUMINUM GUTTER AND DOWNSPOUTS - WHITE
- CAST STONE
- MODULAR FACE BRICK
- VINYL WINDOW - WHITE
- ALUMINUM CLAD SCREENED PORCH SYSTEM - WHITE
- CEMENT FIBER COLUMN - WHITE
- NOT USED
- CEMENT FIBER SIDING - 7" EXPOSURE, SMOOTH TEXTURE
- CEMENT FIBER SIDING - 4" EXPOSURE, SMOOTH TEXTURE
- CEMENT FIBER CORNER TRIM - WHITE
- CEMENT FIBER TRIM - WHITE
- HOLLOW METAL DOOR AND FRAME; PAINTED
- MAPES PANEL (FINISHED BOTH SIDES)
- PRE-FINISHED METAL COPING
- CEMENT FIBER PANEL SIDING - WHITE



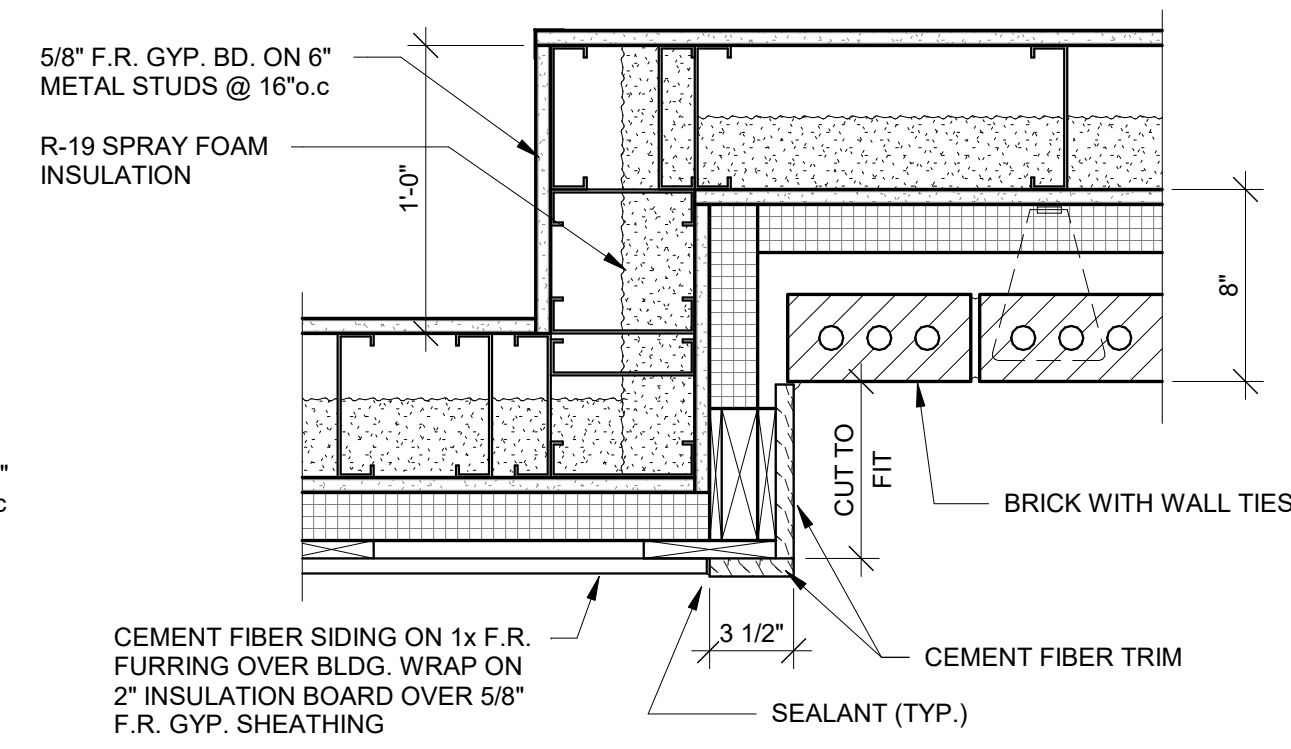
9 TRIM AT INSIDE CORNER
1 1/2" = 1'-0"



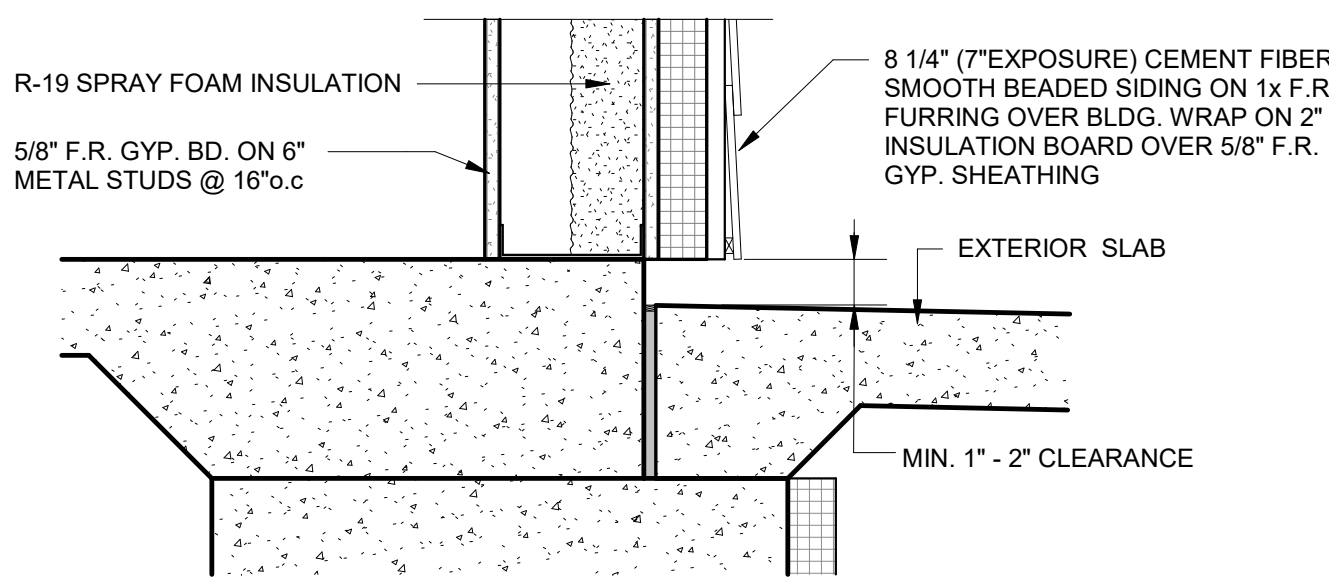
8 TRIM at OUTSIDE CORNER
1 1/2" = 1'-0"



7 BRICK and SIDING TRANSITION
1 1/2" = 1'-0"



5 BRICK at SIDING CORNER
1 1/2" = 1'-0"



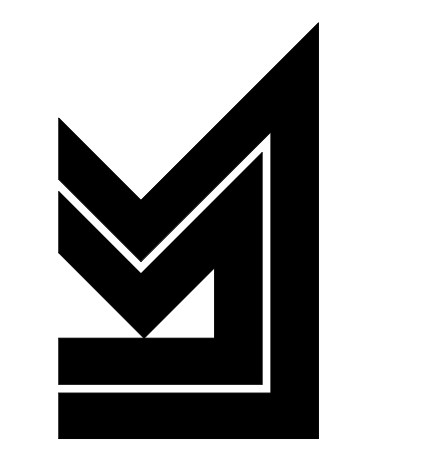
6 HARDSCAPE CLEARANCE
1 1/2" = 1'-0"

PRINTS ISSUED

DATE	PURPOSE	NO.
6/2/19	50% OWNER REVIEW	
7/2/19	100% OWNER REVIEW	
8/16/19	FOR PERMIT	
3/6/20	NO DCA COMMENTS	

ARTIS SENIOR LIVING
MEMORY CARE & ASSISTED LIVING
700 MIDDLESEX AVENUE
METUCHEN, N.J.

Dan Dokken, AIA
Architect



DCA Ref.#
CH# 18
Dan Dokken, AIA Architect
345 RIVERVIEW, WICHITA, KS 67203
Phone (316) 268-0230 Fax: (316) 268-0205
CONTACT: JIM FISHER
PROJECT NUMBER:
19155
SHEET TITLE:
EXTERIOR ELEVATIONS
SHEET NUMBER:
A3.2