

- REFERENCES:**
1. THE OFFICIAL TAX ASSESSOR'S MAP OF THE BOROUGH OF METUCHEN, MIDDLESEX COUNTY, NEW JERSEY, SHEET #8.01.
  2. MAP ENTITLED "NATIONAL FLOOD INSURANCE PROGRAM, FIRM, FLOOD INSURANCE RATE MAP, MIDDLESEX COUNTY, NEW JERSEY, (ALL JURISDICTIONS), PANEL 61 OF 286", MAP NUMBER 340230061F, EFFECTIVE DATE: JULY 6, 2010.
  3. MAP ENTITLED "NATIONAL FLOOD INSURANCE PROGRAM, FIRM, FLOOD INSURANCE RATE MAP, MIDDLESEX COUNTY, NEW JERSEY, (ALL JURISDICTIONS), PANEL 42 OF 286", MAP NUMBER 340230042F, EFFECTIVE DATE: JULY 6, 2010.
  4. MAP ENTITLED "REVISED MAP OF INDUSTRIAL PARK SITUATED IN BOROUGH OF METUCHEN, MIDDLESEX CO., N.J." FILED IN THE MIDDLESEX COUNTY CLERK'S OFFICE ON DECEMBER 4, 1967 AS MAP NUMBER 3140 FILE 955.
  5. MAP ENTITLED "REVISED MAP OF 141 BUILDING LOTS, PROPERTY OF JOSEPH BERGLIN AND THERESA BERGLIN, SITUATE NEAR THE PUBLIC SERVICE POWER STATION, METUCHEN, NEW JERSEY" FILED IN THE MIDDLESEX COUNTY CLERK'S OFFICE ON AUGUST 25, 1923 AS MAP NUMBER 1022 FILE 593.
  6. MAP ENTITLED "MAP OF DURHAM HILL - SECTION 2, SITUATED IN BOROUGH OF METUCHEN, MIDDLESEX COUNTY, N.J." FILED IN THE MIDDLESEX COUNTY CLERK'S OFFICE ON JANUARY 15, 1964 AS MAP NUMBER 2735 FILE 951.

**UTILITIES:**

THE FOLLOWING COMPANIES WERE NOTIFIED BY NEW JERSEY ONE-CALL SYSTEM (1.800.272.1000) AND REQUESTED TO MARK OUT UNDERGROUND FACILITIES AFFECTING AND SERVICING THIS SITE. THE UNDERGROUND UTILITY INFORMATION SHOWN HEREON IS BASED UPON THE UTILITY COMPANIES RESPONSE TO THIS REQUEST. SERIAL NUMBER(S): 202412391

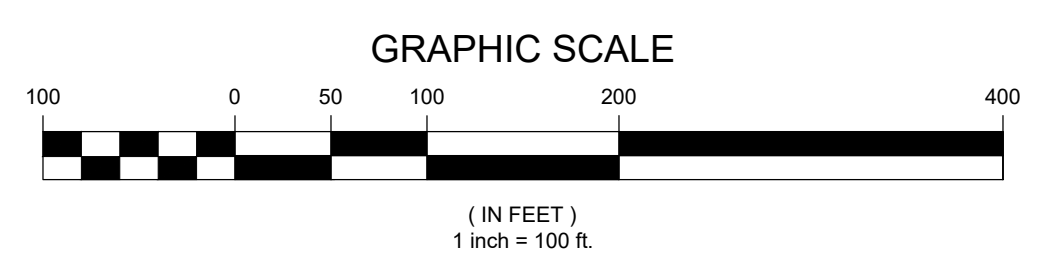
**UTILITY COMPANY**  
 VERIZON  
 METUCHEN BORO  
 PSE&G  
 ELIZABETH TOWN GAS  
 MIDDLESEX WATER CO

**PHONE NUMBER**  
 800.427.9977  
 732.632.9519  
 800.436.7734  
 800.242.5830  
 800.549.3802



THE STATE OF NEW JERSEY REQUIRES NOTIFICATION BY EXCAVATORS, DESIGNERS, OR ANY PERSON PREPARING TO DISTURB THE EARTH'S SURFACE ANYWHERE IN THE STATE.

THIS SURVEY IS CERTIFIED TO:  
 - STEWART TITLE GUARANTY COMPANY  
 - RESIDENTIAL TITLE & ESCROW COMPANY  
 - METUCHEN REALTY ACQUISITION, LLC  
 - 212 DURHAM URBAN RENOVATION ENTITY, LLC



THIS IS TO CERTIFY THAT THIS MAP OR PLAT AND THE SURVEY ON WHICH IT WAS BASED WERE MADE IN ACCORDANCE WITH THE '2016 MINIMUM STANDARD DETAIL REQUIREMENTS FOR ALTA/NSPS LAND TITLE SURVEYS', JOINTLY ESTABLISHED AND ADOPTED BY ALTA AND NSPS, AND INCLUDES ITEMS 2, 3, 4, 8, 9, 13 & 14 OF TABLE A THEREOF. THE FIELD WORK WAS COMPLETED ON 08-31-2020.

NOT A VALID ORIGINAL DOCUMENT UNLESS EMBOSSED WITH RAISED IMPRESSION SEAL.

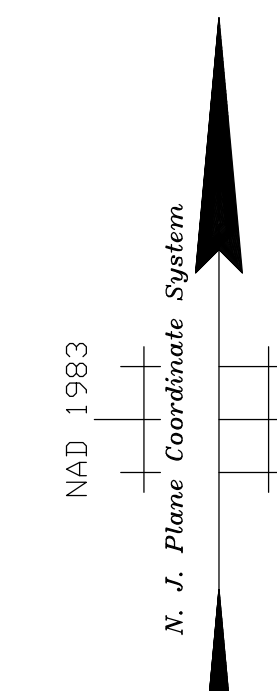
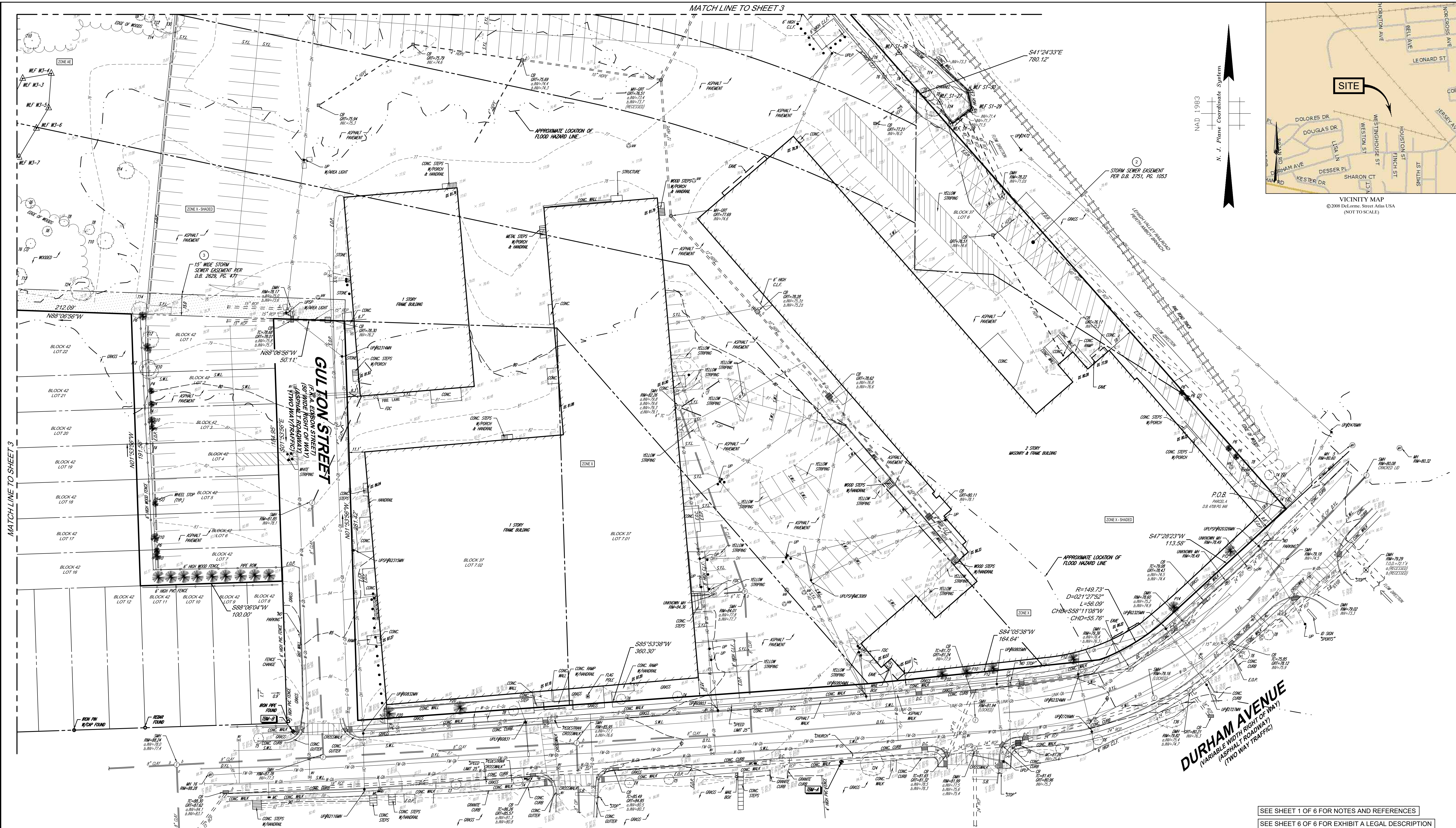
**JAMES D. SENS**  
 NEW JERSEY PROFESSIONAL LAND SURVEYOR #246504322600  
 NEW JERSEY CERTIFICATE OF AUTHORIZATION #24627938600

09-20-2022  
 DATE

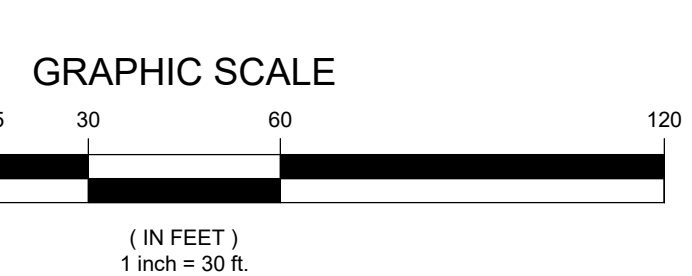
FIELD DATE	08-31-2020	ALTA/NSPS LAND TITLE SURVEY							
FIELD BOOK NO.	20-22								
FIELD BOOK PG.	69	LOTS 5.05, 5.12, 5.22, 6, 7.01, 7.02, 13, 14, 15.01, 16.02, 16.03 & 17.01 17.02, BLOCK 37 AND LOTS 1-7, BLOCK 42							
FIELD CREW	S.B./D.O.C.								
DRAWN	P.R.V.	212 DURHAM AVENUE BOROUGH OF METUCHEN, MIDDLESEX COUNTY STATE OF NEW JERSEY							
REVIEWED	M.W.								
APPROVED:	J.D.S.	DATE	09-20-2022	SCALE	1"=100'	FILE NO.	01-190505-00	DWG. NO.	1 OF 6

SEE SHEET 6 OF 6 FOR EXHIBIT A LEGAL DESCRIPTION





CONTROL POINT ASSOCIATES, INC. - ALL RIGHTS RESERVED. ORIGINAL PROJECT OR THE PURPOSE ORIGINALLY INTENDED, WITHOUT THE WRITTEN PERMISSION OF CONTROL POINT ASSOCIATES, INC. IS PROHIBITED.



UTILITIES:  
THE FOLLOWING COMPANIES WERE NOTIFIED BY NEW JERSEY ONE-CALL SYSTEM (1 800 272 1000) AND REQUESTED TO MARK OUT UNDERGROUND FACILITIES AFFECTING AND SERVICING THIS SITE. THE UNDERGROUND UTILITY INFORMATION SHOWN HEREON IS BASED UPON THE UTILITY COMPANIES RESPONSE TO THIS REQUEST. SERIAL NUMBER(S): 202412391

UTILITY COMPANY  
VERIZON  
METUCHEN BORO  
PSE&G  
ELIZABETHTOWN GAS  
MIDDLESEX WATER CO

PHONE NUMBER  
800 427 9977  
732 632 8518  
800 436 7734  
800 242 5830  
800 549 3802



THE STATE OF NEW JERSEY REQUIRES NOTIFICATION BY EXCAVATORS, DESIGNERS, OR ANY PERSON PREPARING TO DISTURB THE EARTH'S SURFACE ANYWHERE IN THE STATE.

THIS SURVEY IS CERTIFIED TO:  
- STEWART TITLE GUARANTY COMPANY  
- RESIDENTIAL TITLE & ESCROW COMPANY  
- METUCHEN REALTY ACQUISITION, LLC  
- 212 DURHAM URBAN RENEWAL ENTITY, LLC

THIS IS TO CERTIFY THAT THIS MAP OR PLAT AND THE SURVEY ON WHICH IT WAS BASED WERE MADE IN ACCORDANCE WITH THE '2016 MINIMUM STANDARD DETAIL REQUIREMENTS FOR ALTA/NSPS LAND TITLE SURVEYS', JOINTLY ESTABLISHED AND ADOPTED BY ALTA AND NSPS, AND INCLUDES ITEMS 2, 3, 4, 8, 9, 13 & 14 OF TABLE A THEREOF. THE FIELD WORK WAS COMPLETED ON 08-31-2020.

NOT A VALID ORIGINAL DOCUMENT UNLESS EMBOSSED WITH RAISED IMPRESSION SEAL.

09-20-2022 DATE

**JAMES D. SENS**  
NEW JERSEY PROFESSIONAL LAND SURVEYOR #246504322600  
NEW JERSEY CERTIFICATE OF AUTHORIZATION #246504322600

FIELD DATE 08-31-2020	ALTA/NSPS LAND TITLE SURVEY
FIELD BOOK NO. 20-22	LOTS 5, 05, 5, 12, 5, 22, 6, 7, 01, 7, 02, 13, 14, 15, 01, 16, 02, 16, 03 & 17, 01, 17, 02, BLOCK 37 AND LOTS 1-7, BLOCK 42
FIELD BOOK PG. 69	212 DURHAM AVENUE BOROUGH OF METUCHEN, MIDDLESEX COUNTY STATE OF NEW JERSEY
FIELD CREW S.B./D.O.C.	<b>CONTROL POINT ASSOCIATES, INC.</b> 30 INDEPENDENCE BOULEVARD, SUITE 100 WARREN, NJ 07059 908.668.0099 - 908.668.9595 FAX WWW.CPANSURVEY.COM
DRAWN: P.R.V.	CHALFONTE, PA 218719800 MILFORD, NJ 080482099 MANLIFFTAN, NY 146360461 LEONI, OH 4402410001 SOUTHBRIDGE, MA 019603400 ROSTON, MA 019680100 SEABROOK, NJ 0724210100
REVIEWED: M.W.	APPROVED: J.D.S.
DATE 09-20-2022	SCALE 1"=30'
FILE NO. 01-190505-00	DWG. NO. 2 OF 6

SEE SHEET 1 OF 6 FOR NOTES AND REFERENCES  
SEE SHEET 6 OF 6 FOR EXHIBIT A LEGAL DESCRIPTION

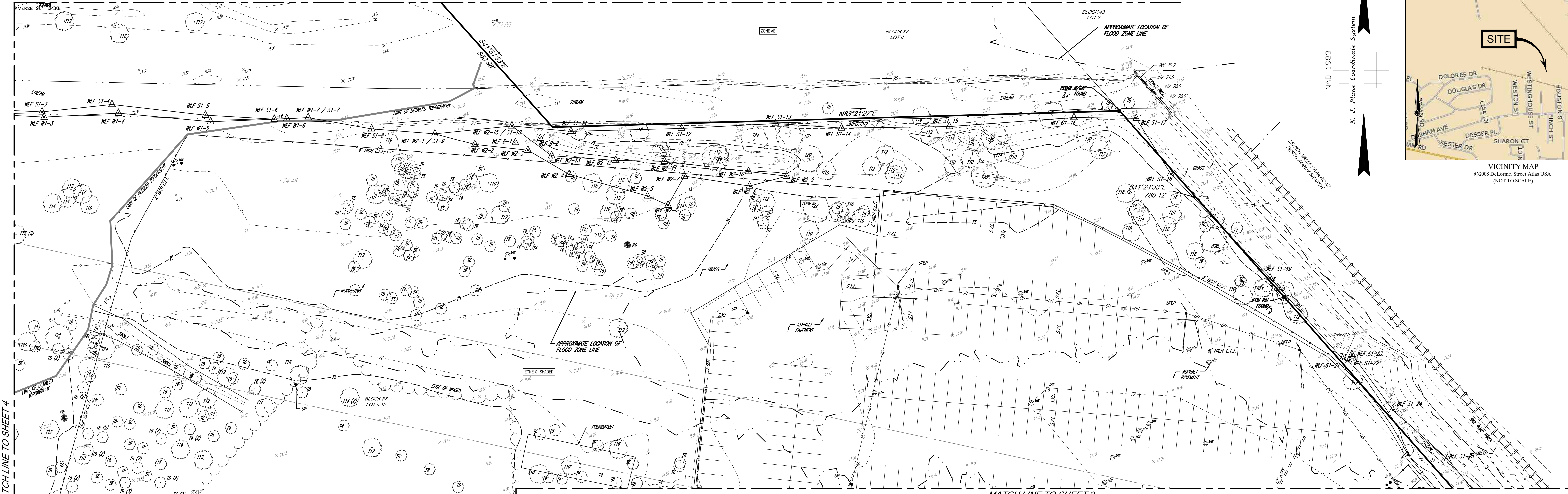
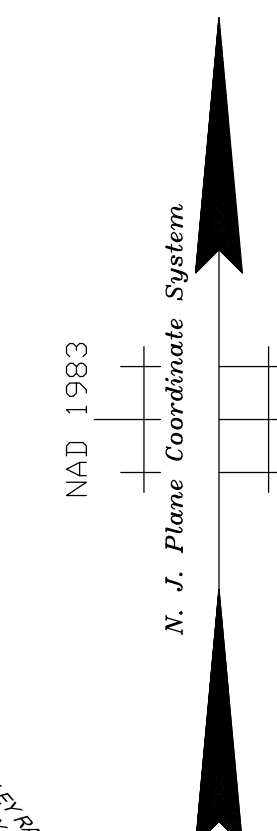


MATCH LINE TO SHEET 5



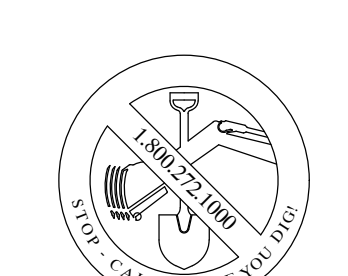
SITE

VICINITY MAP  
© 2008 DeLorme, Street Atlas USA  
(NOT TO SCALE)



MATCH LINE TO SHEET 4

MATCH LINE TO SHEET 2



THE STATE OF NEW JERSEY REQUIRES NOTIFICATION BY EXCAVATORS, DESIGNERS, OR ANY PERSON PREPARING TO DISTURB THE EARTH'S SURFACE ANYWHERE IN THE STATE.

UTILITIES:

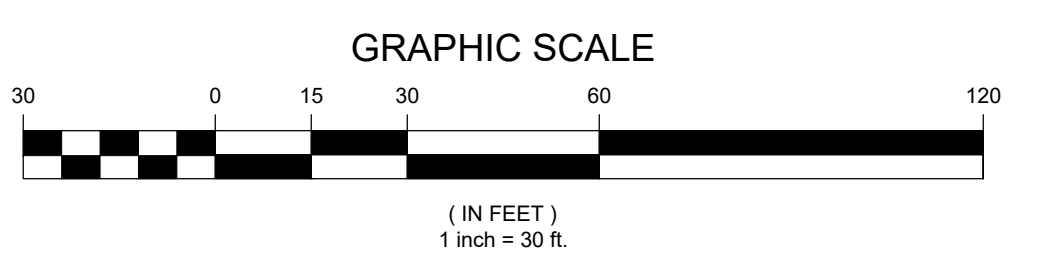
THE FOLLOWING COMPANIES WERE NOTIFIED BY NEW JERSEY ONE-CALL SYSTEM (1.800.272.1000) AND REQUESTED TO MARK OUT UNDERGROUND FACILITIES AFFECTING THIS SITE. THE UNDERGROUND UTILITY INFORMATION SHOWN HEREON IS BASED UPON THE UTILITY COMPANIES RESPONSE TO THIS REQUEST. SERIAL NUMBER(S): 202412391

UTILITY COMPANY	PHONE NUMBER
VERIZON	800.427.9977
METUCHEN BORO	732.632.9518
PSE&G	800.436.7734
ELIZABETHTOWN GAS	800.242.5630
MIDDLESEX WATER CO	800.549.3802

LEGEND			
124	EXISTING CONTOUR	SSFC	STEEL FACED CONC. CURB
125	EXISTING SPOT ELEVATION	CLC	CHAIN LINK FENCE
126	EXIST. TOP OF CURB ELEVATION	DC	DEPRESSED CURB
127	EXIST. GUTTER ELEVATION	EDC	EDGE OF CONC.
128	EXIST. TOP OF WALL ELEVATION	EDP	EDGE OF PAVEMENT
129	EXIST. BOTTOM OF WALL ELEVATION	GL	GUTTER LINE
130	EXIST. DOOR SILL ELEVATION	MC	METAL COVER
131	OVERHEAD WIRES	FDC	FIRE DEPARTMENT CONNECTION
132	APPROX. LOC. UNDERGROUND ELECTRIC LINE	TRP	TYPICAL
133	APPROX. LOC. UNDERGROUND NATURAL GAS LINE	SWL	SOLID WHITE LINE
134	APPROX. LOC. UNDERGROUND SAN. FORCE MAIN LINE	SYL	SOLID YELLOW LINE
135	APPROX. LOC. UNDERGROUND UNKNOWN UTILITY LINE	DYL	DOUBLE YELLOW LINE
136	APPROX. LOC. UNDERGROUND WATER LINE	HT	HEIGHT
137	QUALITY LEVEL B UTILITY LOCATION	MB	METAL BOX
138	QUALITY LEVEL C UTILITY LOCATION	B	BOLLARD
139	DEPRESSED CURB	MW	MONITORING WELL
140	HYDRANT	AL	AREA LIGHT
141	SIAMSE CONNECTION	CB	CATCH BASIN OR INLET
142	WATER VALVE	DT	DECIDUOUS TREE & TRUNK SIZE
143	UNKNOWN VALVE	CT	CONIFEROUS TREE & TRUNK SIZE
		DWP	DETECTABLE WARNING PAD

ELECTRIC STREET  
(60' WIDE RIGHT OF WAY)  
(ASPHALT ROADWAY)  
(TWO WAY TRAFFIC)

HOUSTON STREET  
(60' WIDE RIGHT OF WAY)  
(ASPHALT ROADWAY)  
(TWO WAY TRAFFIC)



SEE SHEET 1 OF 6 FOR NOTES AND REFERENCES  
SEE SHEET 6 OF 6 FOR EXHIBIT A LEGAL DESCRIPTION

THIS IS TO CERTIFY THAT THIS MAP OR PLAT AND THE SURVEY ON WHICH IT WAS BASED WERE MADE IN ACCORDANCE WITH THE 2016 MINIMUM STANDARD DETAIL REQUIREMENTS FOR ALTA/NSPS LAND TITLE SURVEYS, JOINTLY ESTABLISHED AND ADOPTED BY ALTA AND NSPS, AND INCLUDES ITEMS 2, 3, 4, 8, 9, 13 & 14 OF TABLE A THEREOF. THE FIELD WORK WAS COMPLETED ON 08-31-2020.

NOT A VALID ORIGINAL DOCUMENT UNLESS EMBOSSED WITH RAISED IMPRESSION SEAL.

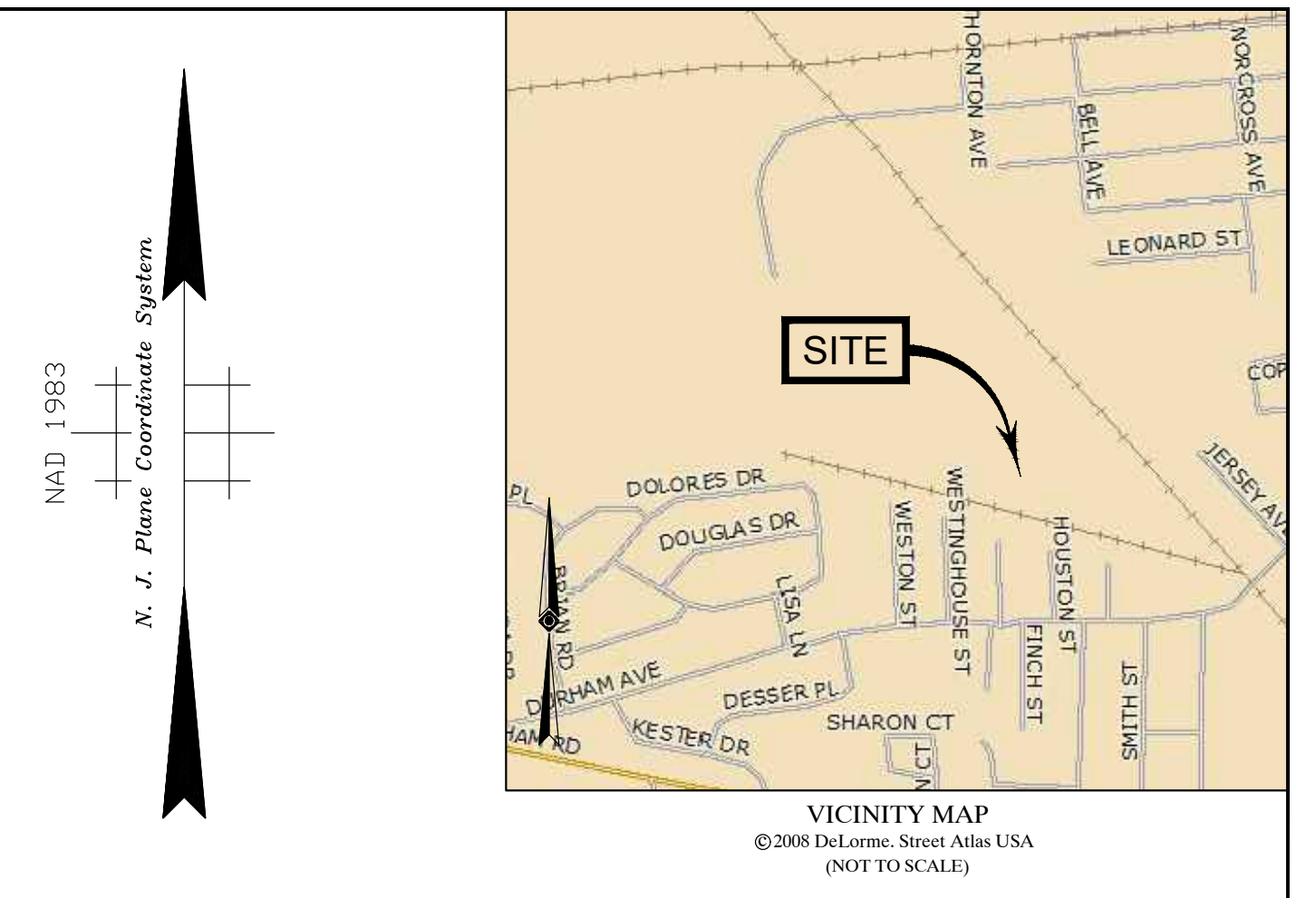
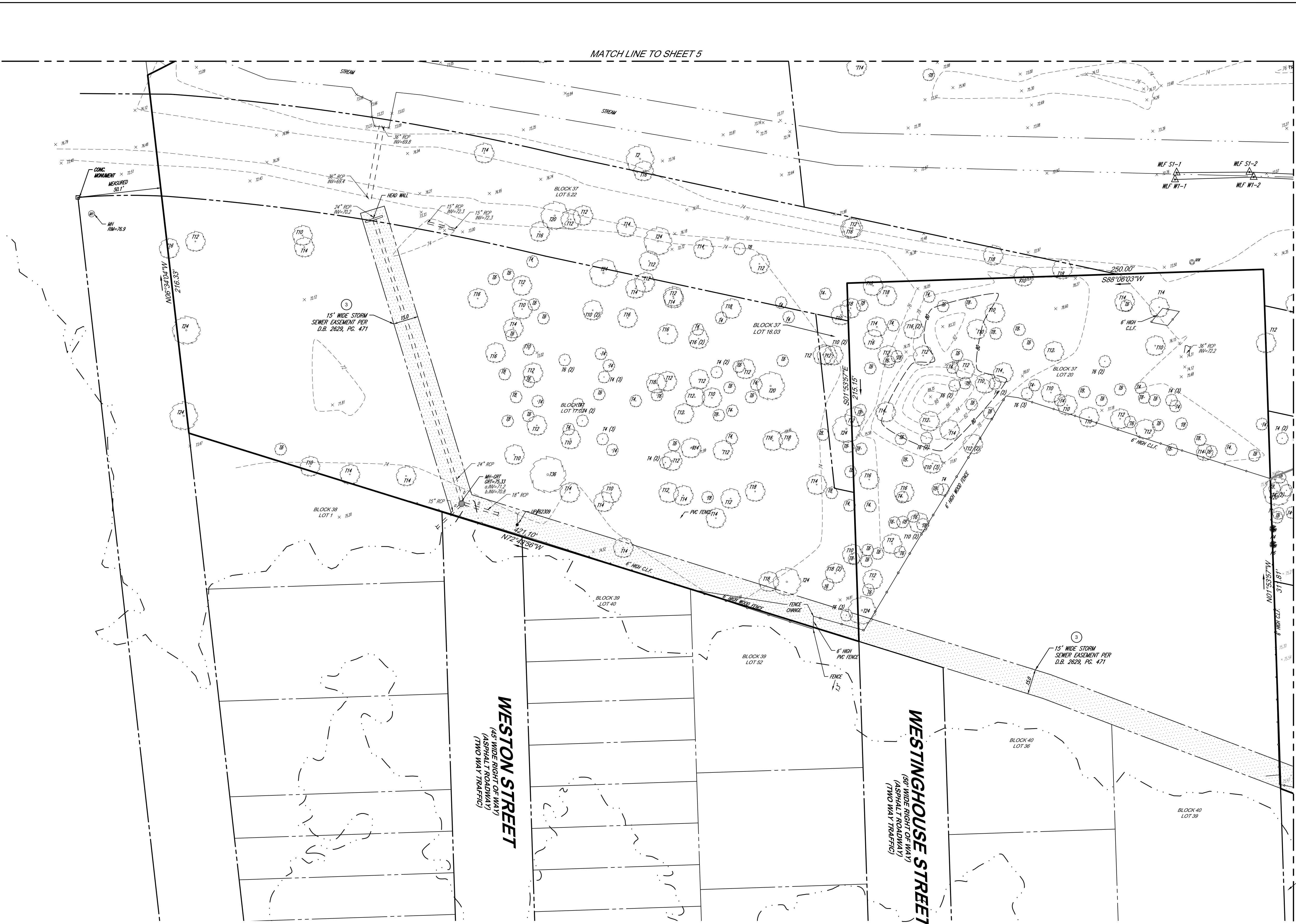
09-20-2022 DATE

**JAMES D. SENS**  
NEW JERSEY PROFESSIONAL LAND SURVEYOR #24G504322600  
NEW JERSEY CERTIFICATE OF AUTHORIZATION #24G27938600

FIELD DATE	08-31-2020	ALTA/NSPS LAND TITLE SURVEY	
FIELD BOOK NO.	20-22	LOTS 5.05, 5.12, 5.22, 6, 7.01, 7.02, 13, 14, 15.01, 16.02, 16.03 & 17.01 17.02, BLOCK 37 AND LOTS 1-7, BLOCK 42	
FIELD BOOK PG.	69	212 DURHAM AVENUE BOROUGH OF METUCHEN, MIDDLESEX COUNTY STATE OF NEW JERSEY	
FIELD CREW	S.B./D.O.C.	<b>CONTROL POINT ASSOCIATES, INC.</b>	
DRAWN	P.R.V.	30 INDEPENDENCE BOULEVARD, SUITE 100 WARREN, NJ 07059	
REVIEWED	M.W.	908.668.0999 - 908.668.9595 FAX WWW.CPASURVEY.COM	
APPROVED	J.D.S.	DATE	
DATE	09-20-2022	SCALE	1"=30'
FILE NO.	01-190505-00	DWG. NO.	3 OF 6

CONTROL POINT ASSOCIATES, INC. ALL RIGHTS RESERVED. ORIGINAL PROJECT OR THE PURPOSE ORIGINALLY INTENDED, WITHOUT THE WRITTEN PERMISSION OF CONTROL POINT ASSOCIATES, INC. IS PROHIBITED.





**LEGEND**

124	EXISTING CONTOUR	STREET LIGHT
125	EXISTING SPOT ELEVATION	SIGN
123.45	EXIST. TOP OF CURB ELEVATION	MAIL BOX
123.45	EXIST. GUTTER ELEVATION	BOLLARD
123.45	EXIST. TOP OF WALL ELEVATION	MONITORING WELL
123.45	EXIST. BOTTOM OF WALL ELEVATION	AREA LIGHT
123.45	EXIST. DOOR SILL ELEVATION	CATCH BASIN OR INLET
OH	OVERHEAD WIRES	DECIDUOUS TREE & TRUNK SIZE
E	APPROX. LOC. UNDERGROUND ELECTRIC LINE	CONIFEROUS TREE & TRUNK SIZE
G	APPROX. LOC. UNDERGROUND NATURAL GAS LINE	DETECTABLE WARNING PAD
M	APPROX. LOC. UNDERGROUND SAN. FORCE MAIN LINE	STEEL FACED CONC. CURB
UNK	APPROX. LOC. UNDERGROUND UNKNOWN UTILITY LINE	CHAIN LINK FENCE
W	APPROX. LOC. UNDERGROUND WATER LINE	DEPRESSED CURB
Q1	QUALITY LEVEL B UTILITY LOCATION	EDGE OF CONC.
Q2	QUALITY LEVEL C UTILITY LOCATION	EDGE OF PAVEMENT
DC	DEPRESSED CURB	GUTTER LINE
H	HYDRANT	M.C.
SC	SIAMSE CONNECTION	F.D.C.
WV	WATER VALVE	(MP)
UV	UNKNOWN VALVE	S.W.L.
GV	GAS VALVE	S.Y.L.
GM	GAS METER	D.Y.L.
EM	ELECTRIC METER	H.
MH	UNKNOWN MANHOLE	S.B.
SMH	SANITARY/SEWER MANHOLE	BLK.
DMH	DRAINAGE/STORM MANHOLE	B.F.P.A.
ACU	AIR CONDITIONING UNIT	TS
V	VENT & NUMBER OF VENTS	BS
UP	UTILITY POLE	DL
UPSP	UTILITY POLE/LIGHT POLE/SOLAR PANEL	SB
GW	GUY WIRE	T.O.D.

**ELECTRIC STREET**  
 (50' WIDE RIGHT OF WAY)  
 (ASPHALT ROADWAY)  
 (TWO WAY TRAFFIC)

SEE SHEET 1 OF 6 FOR NOTES AND REFERENCES  
 SEE SHEET 6 OF 6 FOR EXHIBIT A LEGAL DESCRIPTION

**UTILITIES:**  
 THE FOLLOWING COMPANIES WERE NOTIFIED BY NEW JERSEY ONE-CALL SYSTEM (1 800 272 1000) AND REQUESTED TO MARK OUT UNDERGROUND FACILITIES AFFECTING AND SERVICING THIS SITE. THE UNDERGROUND UTILITY INFORMATION SHOWN HEREON IS BASED UPON THE UTILITY COMPANIES RESPONSE TO THIS REQUEST. SERIAL NUMBER(S): 202412391

UTILITY COMPANY	PHONE NUMBER
VERIZON	800 427 9977
METUCHEN BORO	732 632 8518
PSEG	800 436 7734
ELIZABETHTOWN GAS	800 242 5830
MIDDLESEX WATER CO	800 549 3802



THE STATE OF NEW JERSEY REQUIRES NOTIFICATION BY EXCAVATORS, DESIGNERS, OR ANY PERSON PREPARING TO DISTURB THE EARTH'S SURFACE ANYWHERE IN THE STATE.

THIS SURVEY IS CERTIFIED TO:  
 - STEWART TITLE GUARANTY COMPANY  
 - RESIDENTIAL TITLE & ESCROW COMPANY  
 - METUCHEN REALTY ACQUISITION, LLC  
 - 212 DURHAM URBAN RENEWAL ENTITY, LLC

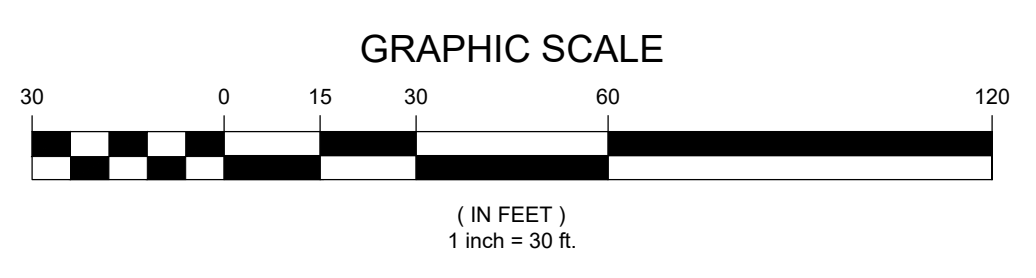
THIS IS TO CERTIFY THAT THIS MAP OR PLAT AND THE SURVEY ON WHICH IT WAS BASED WERE MADE IN ACCORDANCE WITH THE '2016 MINIMUM STANDARD DETAIL REQUIREMENTS FOR ALTA/NSPS LAND TITLE SURVEYS', JOINTLY ESTABLISHED AND ADOPTED BY ALTA AND NSPS, AND INCLUDES ITEMS 2, 3, 4, 8, 9, 13 & 14 OF TABLE A THEREOF. THE FIELD WORK WAS COMPLETED ON 08-31-2020.

NOT A VALID ORIGINAL DOCUMENT UNLESS EMBOSSED WITH RAISED IMPRESSION SEAL.

09-20-2022  
DATE

**JAMES D. SENS**  
 NEW JERSEY PROFESSIONAL LAND SURVEYOR #24G504322600  
 NEW JERSEY CERTIFICATE OF AUTHORIZATION #24GA27938600

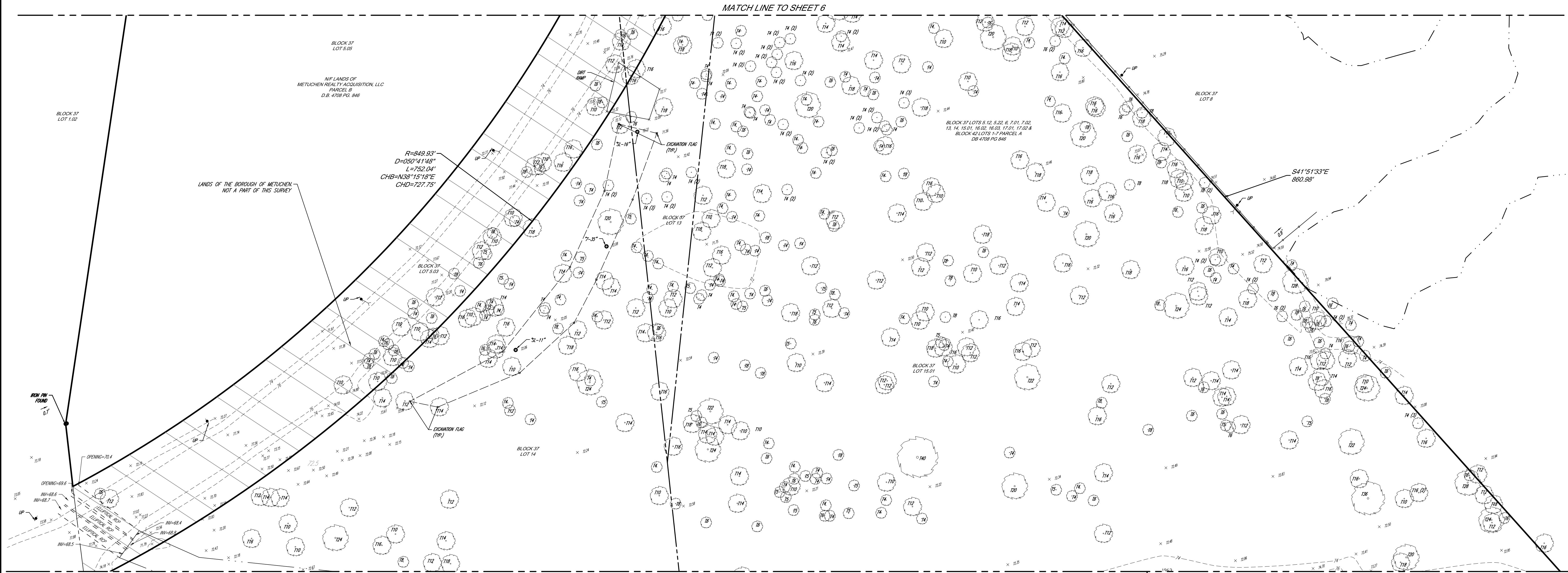
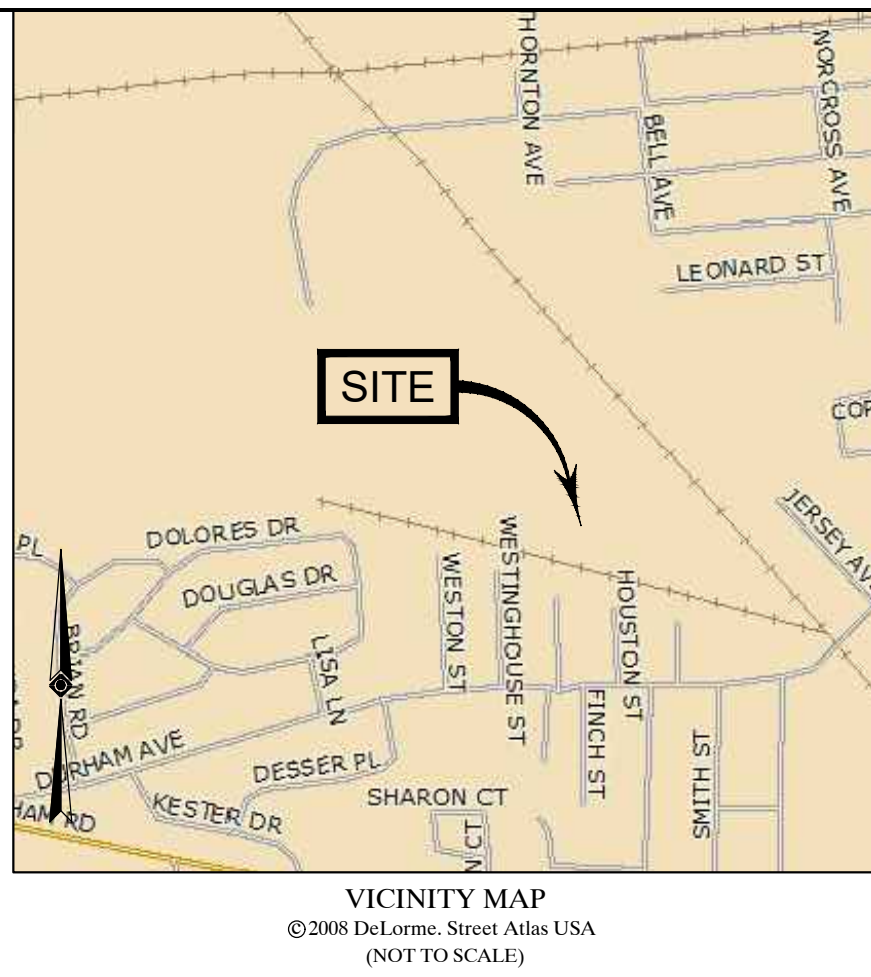
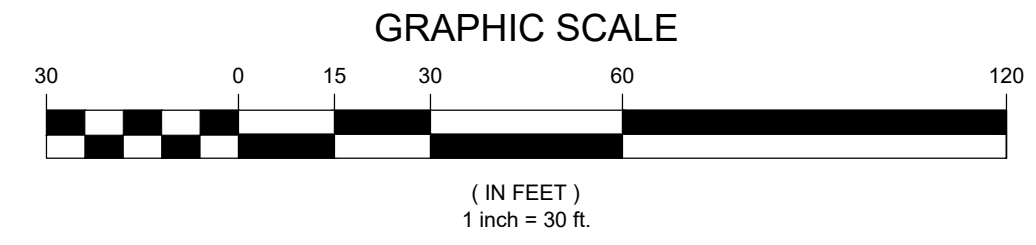
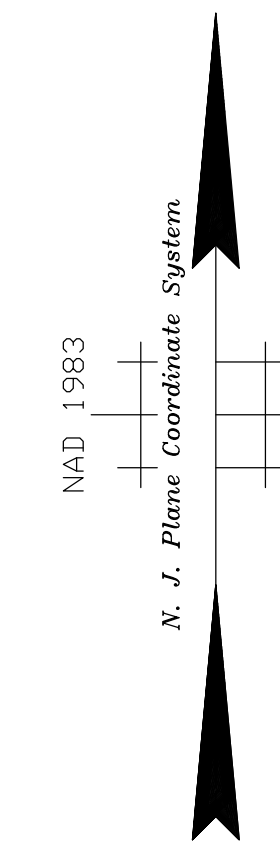
FIELD DATE	08-31-2020	ALTA/NSPS LAND TITLE SURVEY			
FIELD BOOK NO.	20-22	LOTS 5, 05, 5.12, 5.22, 6, 7, 01, 7.02, 13, 14, 15.01, 16.02, 16.03 & 17.01 17.02, BLOCK 37 AND LOTS 1-7, BLOCK 42			
FIELD BOOK PG.	69	212 DURHAM AVENUE BOROUGH OF METUCHEN, MIDDLESEX COUNTY STATE OF NEW JERSEY			
FIELD CREW	S.B./D.O.C.	<b>CONTROL POINT ASSOCIATES, INC.</b> 30 INDEPENDENCE BOULEVARD, SUITE 100 WARREN, NJ 07059 908.668.0099 - 908.668.9595 FAX WWW.CPANSURVEY.COM			
DRAWN	P.R.V.	DATE	09-20-2022	SCALE	1"=30'
REVIEWED	M.W.	FILE NO.	01-190505-00	DWG. NO.	4 OF 6



CONTROL POINT ASSOCIATES, INC. ALL RIGHTS RESERVED. ORIGINAL PROJECT OR THE PURPOSE ORIGINALLY INTENDED, WITHOUT THE WRITTEN PERMISSION OF CONTROL POINT ASSOCIATES, INC. IS PROHIBITED.



LEGEND					
124	EXISTING CONTOUR	GV	GAS VALVE	S.F.C.C.	STEEL FACED CONC. CURB
125	EXISTING SPOT ELEVATION	EM	GAS METER	CL.F.	CHAIN LINK FENCE
10 123.45	EXIST. TOP OF CURB ELEVATION	EM	ELECTRIC METER	DC	DEPRESSED CURB
G 123.95	EXIST. GUTTER ELEVATION	MH	UNKNOWN MANHOLE	EAC	EDGE OF CONC.
TW 123.45	EXIST. TOP OF WALL ELEVATION	SMH	SANITARY/SEWER MANHOLE	EAP	EDGE OF PAVEMENT
BW 123.95	EXIST. BOTTOM OF WALL ELEVATION	DMH	DRAINAGE/STORM MANHOLE	GL	GUTTER LINE
DS 123.45	EXIST. DOOR SILL ELEVATION	ACU	AIR CONDITIONING UNIT	MC	METAL COVER
OH	OVERHEAD WIRES	V	VENT & NUMBER OF VENTS	FDC	FIRE DEPARTMENT CONNECTION
E	APPROX. LOC. UNDERGROUND ELECTRIC LINE	UP	UTILITY POLE	(TP)	TYPICAL
G	APPROX. LOC. UNDERGROUND NATURAL GAS LINE	UPSP	UTILITY POLE/LIGHT POLE/SOLAR PANEL	S.W.L.	SOLID WHITE LINE
NM	APPROX. LOC. UNDERGROUND SAN. FORCE MAIN LINE	SL	GUY WIRE	S.Y.L.	SOLID YELLOW LINE
UNK	APPROX. LOC. UNDERGROUND UNKNOWN UTILITY LINE	STL	STREET LIGHT	D.Y.L.	DOUBLE YELLOW LINE
W	APPROX. LOC. UNDERGROUND WATER LINE	S	SIGN	H	HEIGHT
QB	QUALITY LEVEL B UTILITY LOCATION	M.B.	MAIL BOX	S.B.	STOP BAR
QC	QUALITY LEVEL C UTILITY LOCATION	B	BOLLARD	B	BUILDING
DC	DEPRESSED CURB	M.W.	MONITORING WELL	B.F.P.A.	BUILDING FOOTPRINT AREA
H	HYDRANT	A.L.	AREA LIGHT	TOS	TOP OF STRUCTURE
SC	SIAMESE CONNECTION	C.B.O.I.	CATCH BASIN OR INLET	BOS	BOTTOM OF STRUCTURE
WV	WATER VALVE	D.T.	DECIDUOUS TREE & TRUNK SIZE	DF	DELIMITATION FLAG (SEE NOTE 12)
UV	UNKNOWN VALVE	CT	CONIFEROUS TREE & TRUNK SIZE	SB	SOIL BORING
		DWP	DETECTABLE WARNING PAD	T.O.D.	TOP OF DEBRIS



UTILITIES:  
THE FOLLOWING COMPANIES WERE NOTIFIED BY NEW JERSEY ONE-CALL SYSTEM (1.800.272.1000) AND REQUESTED TO MARK OUT UNDERGROUND FACILITIES AFFECTING AND SERVICING THIS SITE. THE UNDERGROUND UTILITY INFORMATION SHOWN HEREON IS BASED UPON THE UTILITY COMPANIES RESPONSE TO THIS REQUEST. SERIAL NUMBER(S): 202412391

UTILITY COMPANY	PHONE NUMBER
VERIZON	800.427.9977
METUCHEN BORO	732.632.8518
PSE&G	800.436.7134
ELIZABETHTOWN GAS	800.242.5830
MIDDLESEX WATER CO	800.549.3802



THE STATE OF NEW JERSEY REQUIRES NOTIFICATION BY EXCAVATORS, DESIGNERS, OR ANY PERSON PREPARING TO DISTURB THE EARTH'S SURFACE ANYWHERE IN THE STATE.

THIS SURVEY IS CERTIFIED TO:  
- STEWART TITLE GUARANTY COMPANY  
- RESIDENTIAL TITLE & ESCROW COMPANY  
- METUCHEN REALTY ACQUISITION, LLC  
- 212 DURHAM URBAN RENEWAL ENTITY, LLC

THIS IS TO CERTIFY THAT THIS MAP OR PLAT AND THE SURVEY ON WHICH IT WAS BASED WERE MADE IN ACCORDANCE WITH THE '2016 MINIMUM STANDARD DETAIL REQUIREMENTS FOR ALTA/NSPS LAND TITLE SURVEYS', JOINTLY ESTABLISHED AND ADOPTED BY ALTA AND NSPS, AND INCLUDES ITEMS 2, 3, 4, 8, 9, 13 & 14 OF TABLE A THEREOF. THE FIELD WORK WAS COMPLETED ON 08-31-2020.

NOT A VALID ORIGINAL DOCUMENT UNLESS EMBOSSED WITH RAISED IMPRESSION SEAL.

09-20-2022  
DATE

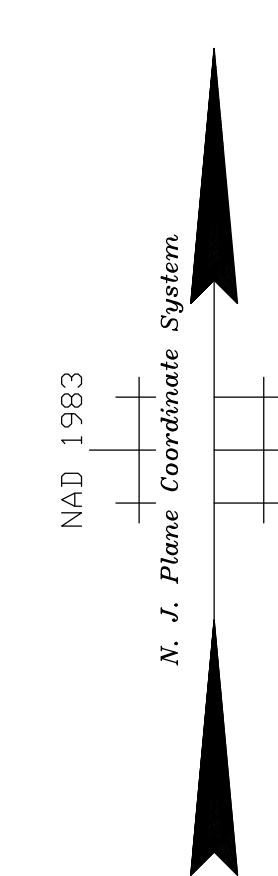
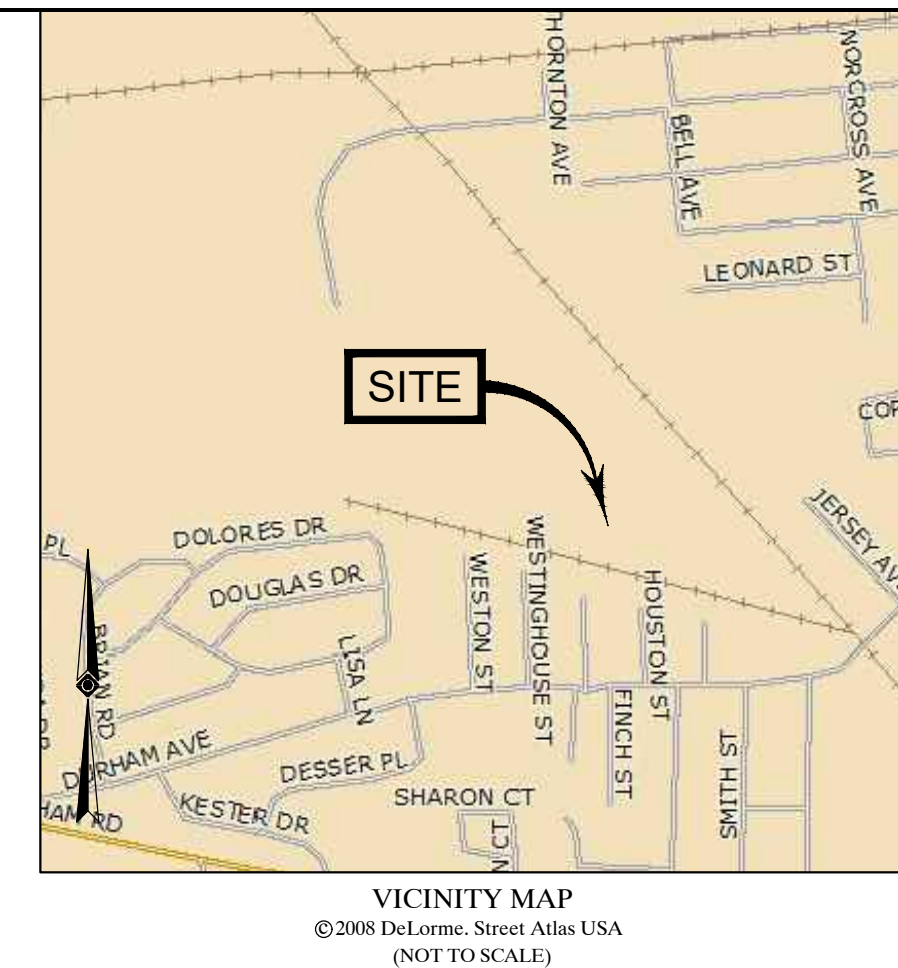
**JAMES D. SENS**  
NEW JERSEY PROFESSIONAL LAND SURVEYOR #24GS04322600  
NEW JERSEY CERTIFICATE OF AUTHORIZATION #24GA27938600

FIELD DATE	08-31-2020	ALTA/NSPS LAND TITLE SURVEY			
FIELD BOOK NO.	20-22	LOTS 5.05, 5.12, 5.22, 6, 7.01, 7.02, 13, 14, 15.01, 16.02, 16.03, 17.01, 17.02 & 16.03 & 17.01 17.02, BLOCK 37 AND LOTS 1-7, BLOCK 42			
FIELD BOOK PG.	69	212 DURHAM AVENUE BOROUGH OF METUCHEN, MIDDLESEX COUNTY STATE OF NEW JERSEY			
FIELD CREW	S.B./D.O.C.	<b>CONTROL POINT ASSOCIATES, INC.</b> 30 INDEPENDENCE BOULEVARD, SUITE 100 WARREN, NJ 07059 908.668.0999 - 908.668.9595 FAX WWW.CPANSURVEY.COM			
DRAWN	P.R.V.				
REVIEWED	M.W.	APPROVED	J.D.S.	DATE	09-20-2022
SCALE	1"=30'	FILE NO.	01-190505-00	DWG. NO.	5 OF 6

SEE SHEET 1 OF 6 FOR NOTES AND REFERENCES  
SEE SHEET 6 OF 6 FOR EXHIBIT A LEGAL DESCRIPTION

CONTROL POINT ASSOCIATES, INC. - ALL RIGHTS RESERVED. ORIGINAL PROJECT OR THE PURPOSE ORIGINALLY INTENDED, WITHOUT THE WRITTEN PERMISSION OF CONTROL POINT ASSOCIATES, INC. IS PROHIBITED.





REVISED MAP OF METUCHEN INDUSTRIAL PARK  
FILED MAP 3-14-10 FILE 940  
BLOCK 37  
LOT 12

EXHIBIT "A"  
LEGAL DESCRIPTION

BEGINNING AT A POINT LOCATED AT THE INTERSECTION OF THE SOUTHWEST LINE OF THE ABANDONED LEHIGH VALLEY RAILROAD COMPANY RIGHT OF WAY AND THE NORTHWEST LINE OF DURHAM AVENUE, SAID POINT BEING THE TRUE POINT OF BEGINNING FOR TRACT A SITUATED APPROXIMATELY 26.22 FEET NORTHWEST OF THE CENTERLINE OF DURHAM AVENUE AND 43.69 FEET SOUTHWEST OF THE CENTERLINE OF THE EXISTING RAILS; THENCE

- PROCEEDING SOUTH 47 DEGREES 21 MINUTES 11 SECONDS WEST, FOR A DISTANCE OF 112.93 FEET ALONG THE NORTH LINE OF DURHAM AVENUE TO A POINT; THENCE
- PROCEEDING 56.09 FEET ALONG A TANGENT ARC TO THE RIGHT OF RADIUS 150.00 FEET, SUBTENDED BY A CHORD OF 55.77 FEET BEARING SOUTH 58 DEGREES 03 MINUTES 58 SECONDS WEST, ALONG THE NORTH LINE OF DURHAM AVENUE TO A POINT; THENCE
- PROCEEDING SOUTH 83 DEGREES 58 MINUTES 26 SECONDS WEST, FOR A DISTANCE OF 164.64 FEET ALONG THE NORTH LINE OF DURHAM AVENUE; TO A POINT; THENCE
- PROCEEDING SOUTH 85 DEGREES 46 MINUTES 28 SECONDS WEST, FOR A DISTANCE OF 360.30 FEET ALONG THE NORTH LINE OF DURHAM AVENUE TO A PK NAIL FOUND AT THE INTERSECTION OF THE NORTH LINE OF DURHAM AVENUE AND THE EAST LINE OF GULTON STREET; THENCE
- PROCEEDING NORTH 02 DEGREES 01 MINUTES 08 SECONDS WEST, FOR A DISTANCE OF 281.42 FEET ALONG THE EAST LINE OF GULTON STREET TO A POINT; THENCE
- PROCEEDING NORTH 88 DEGREES 12 MINUTES 48 SECONDS WEST, FOR A DISTANCE OF 50.11 FEET TO A POINT; THENCE
- PROCEEDING SOUTH 02 DEGREES 01 MINUTES 08 SECONDS EAST, FOR A DISTANCE OF 184.95 FEET ALONG THE WEST LINE OF GULTON STREET TO AN IRON PIPE FOUND; THENCE
- PROCEEDING SOUTH 88 DEGREES 04 MINUTES 03 SECONDS WEST, FOR A DISTANCE OF 99.92 FEET TO AN IRON PIPE FOUND; THENCE
- PROCEEDING NORTH 02 DEGREES 01 MINUTES 08 SECONDS WEST, FOR A DISTANCE OF 191.44 FEET TO A POINT; THENCE
- PROCEEDING NORTH 88 DEGREES 12 MINUTES 48 SECONDS WEST, FOR A DISTANCE OF 212.14 FEET TO A 1/2 INCH REBAR FOUND; THENCE
- PROCEEDING NORTH 69 DEGREES 22 MINUTES 51 SECONDS WEST, FOR A DISTANCE OF 204.01 FEET TO A 1/4 INCH BOLT FOUND; THENCE
- PROCEEDING NORTH 01 DEGREES 59 MINUTES 52 SECONDS WEST, FOR A DISTANCE OF 311.81 FEET TO A POINT; THENCE
- PROCEEDING SOUTH 88 DEGREES 00 MINUTES 08 SECONDS WEST, FOR A DISTANCE OF 250.00 FEET TO A POINT; THENCE
- PROCEEDING SOUTH 01 DEGREES 59 MINUTES 52 SECONDS EAST, FOR A DISTANCE OF 215.15 FEET TO A POINT; THENCE
- PROCEEDING NORTH 72 DEGREES 49 MINUTES 51 SECONDS WEST, FOR A DISTANCE OF 421.22 FEET TO A 1/2 INCH REBAR FOUND; THENCE
- PROCEEDING NORTH 06 DEGREES 43 MINUTES 59 SECONDS WEST, FOR A DISTANCE OF 215.91 FEET TO A POINT; THENCE
- PROCEEDING 752.78 FEET ALONG A NON-TANGENT ARC TO THE LEFT OF RADIUS 849.93 FEET, SUBTENDED BY A CHORD OF 728.41 FEET BEARING NORTH 38 DEGREES 08 MINUTES 52 SECONDS EAST TO A POINT; THENCE
- PROCEEDING SOUTH 41 DEGREES 57 MINUTES 02 SECONDS EAST, FOR A DISTANCE OF 860.78 FEET TO A POINT; THENCE
- PROCEEDING NORTH 88 DEGREES 19 MINUTES 35 SECONDS EAST, FOR A DISTANCE OF 355.40 FEET TO A POINT ON THE SOUTHWEST LINE OF THE ABANDONED LEHIGH VALLEY RAILROAD COMPANY OF RIGHT OF WAY; THENCE
- PROCEEDING SOUTH 41 DEGREES 30 MINUTES 02 SECONDS EAST, FOR A DISTANCE OF 780.07 FEET TO THE PLACE AND POINT OF BEGINNING.

PARCEL B - LOT 5.05, BLOCK 37  
BEGINNING AT A 5 INCH CONCRETE MONUMENT LOCATED AT THE END OF THE EAST LINE OF FORREST STREET; THENCE

- PROCEEDING NORTH 87 DEGREES 49 MINUTES 22 SECONDS EAST, FOR A DISTANCE OF 382.32 FEET TO A POINT OF BEGINNING FOR TRACT B SITUATED APPROXIMATELY 5.18 FEET FROM THE WALL OF A 2 STORY BLOCK BUILDING; THENCE
- PROCEEDING NORTH 86 DEGREES 58 MINUTES 17 SECONDS EAST, FOR A DISTANCE OF 313.53 FEET TO A 4 INCH CONCRETE MONUMENT FOUND; THENCE
- PROCEEDING SOUTH 15 DEGREES 15 MINUTES 12 SECONDS EAST, FOR A DISTANCE OF 59.62 FEET TO A POINT; THENCE
- PROCEEDING 777.63 FEET ALONG A NON-TANGENT ARC TO THE RIGHT OF RADIUS 789.93 FEET SUBTENDED BY A CHORD OF 746.60 FEET BEARING SOUTH 33 DEGREES 44 MINUTES 39 SECONDS WEST TO A POINT; THENCE
- PROCEEDING NORTH 06 DEGREES 40 MINUTES 22 SECONDS WEST FOR A DISTANCE OF 40.80 FEET TO A CONCRETE MONUMENT FOUND; THENCE
- PROCEEDING NORTH 08 DEGREES 18 MINUTES 19 SECONDS EAST; FOR A DISTANCE OF 627.85 FEET TO THE PLACE AND POINT OF BEGINNING.

PARCEL C - LOTS 1 (2 AND 3), BLOCK 66  
BEGINNING AT A POINT IN THE CORNER FORMED BY THE INTERSECTION OF THE NORTHEAST RIGHT OF WAY LINE OF SMITH STREET, AND THE SOUTHERN RIGHT OF WAY LINE OF DURHAM AVENUE; THENCE

- PROCEEDING NORTH 88 DEGREES 32 MINUTES 50 SECONDS EAST, FOR A DISTANCE OF 75.09 FEET TO A POINT; THENCE
- PROCEEDING SOUTH 01 DEGREES 24 MINUTES 35 SECONDS WEST, A DISTANCE OF 117.50 FEET TO A POINT; THENCE
- PROCEEDING NORTH 88 DEGREES 35 MINUTES 25 SECONDS WEST FOR A DISTANCE OF 75.00 FEET TO A POINT; THENCE
- PROCEEDING NORTH 01 DEGREES 24 MINUTES 35 SECONDS EAST, FOR A DISTANCE OF 113.75 FEET TO THE POINT AND PLACE OF BEGINNING

BEING KNOWN AND DESIGNATED AS 212 DURHAM AVENUE, METUCHEN BOROUGH, MIDDLESEX COUNTY, STATE OF NEW JERSEY, BLOCK 37, LOT 5.05 AND BLOCK 37, LOT 7.01 AND BLOCK 37, LOT 7.02 AND BLOCK 37, LOT 14 AND BLOCK 37, LOT 15.01 AND BLOCK 37, LOT 16.02 AND BLOCK 37, LOT 16.03 AND BLOCK 37, LOT 17.01 AND BLOCK 37, LOT 17.02 ON THE MAP OF METUCHEN BOROUGH.

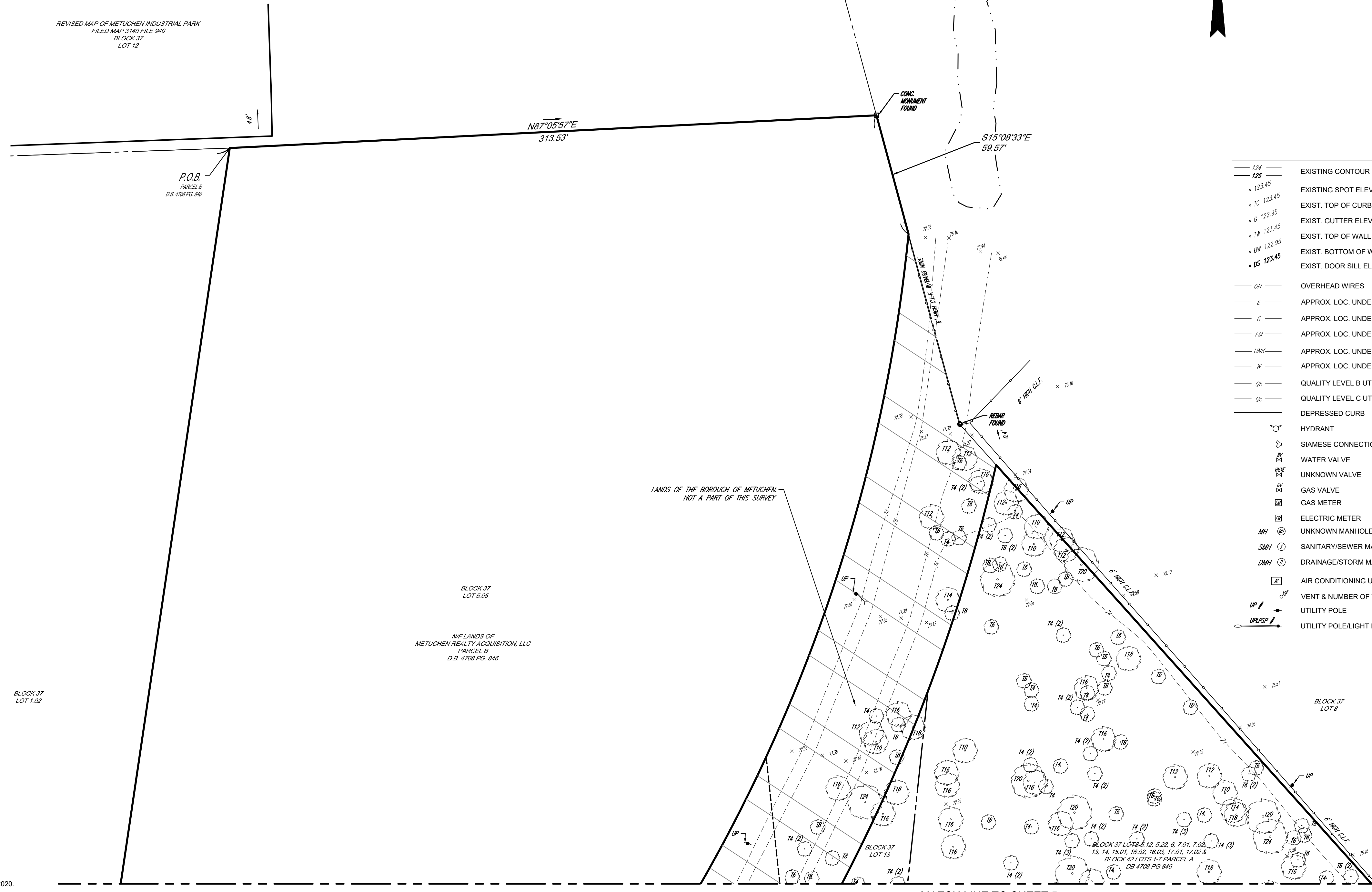
BEING KNOWN AS RIGHT OF WAY, METUCHEN BOROUGH, MIDDLESEX COUNTY, STATE OF NEW JERSEY, BLOCK 37, LOT 5.12 AND BLOCK 37, LOT 5.22 AND BLOCK 37, LOT 6 ON THE TAX MAP OF METUCHEN BOROUGH.

BEING KNOWN AD DURHAM AVENUE, METUCHEN BOROUGH, MIDDLESEX COUNTY, STATE OF NEW JERSEY, BLOCK 37, LOT 13 ON THE TAX MAP OF METUCHEN BOROUGH.

BEING KNOWN AS GULTON STREET, METUCHEN BOROUGH, MIDDLESEX COUNTY, STATE OF NEW JERSEY, BLOCK 42, LOT 1 AND BLOCK 42, LOT 2 AND BLOCK 42, LOT 3, AND BLOCK 42, LOT 4, AND BLOCK 42, LOT 5, AND BLOCK 42, LOT 6 AND BLOCK 42, LOT 7 ON THE MAP OF METUCHEN BOROUGH.

BEING KNOWN AD DURHAM AVENUE, METUCHEN BOROUGH, MIDDLESEX COUNTY, STATE OF NEW JERSEY, BLOCK 66, LOT 1 AND BLOCK 66, LOT 2 AND BLOCK 66, LOT 3 ON THE TAX MAP OF METUCHEN BOROUGH.

NOTE: LOT AND BLOCK SHOWN FOR INFORMATIONAL PURPOSES ONLY  
THE LAND SHOWN ON THIS SURVEY IS THE SAME AS THAT DESCRIBED IN A COMMITMENT FOR TITLE INSURANCE PREPARED BY RESIDENTIAL TITLE & ESCROW COMPANY, AGENT FOR STEWART TITLE GUARANTY COMPANY, COMMITMENT NUMBER: 94335, REVISION NO.: REVISED 12/13/2019 V2, WITH A COMMITMENT DATE OF DECEMBER 24, 2020.



LEGEND		
124	EXISTING CONTOUR	GUY WIRE
125	EXISTING SPOT ELEVATION	STREET LIGHT
123.45	EXIST. TOP OF CURB ELEVATION	SIGN
122.45	EXIST. GUTTER ELEVATION	MAIL BOX
121.45	EXIST. TOP OF WALL ELEVATION	BOLLARD
120.45	EXIST. BOTTOM OF WALL ELEVATION	MONITORING WELL
119.45	EXIST. DOOR SILL ELEVATION	AREA LIGHT
OH	OVERHEAD WIRES	CATCH BASIN OR INLET
E	APPROX. LOC. UNDERGROUND ELECTRIC LINE	DECIDUOUS TREE & TRUNK SIZE
G	APPROX. LOC. UNDERGROUND NATURAL GAS LINE	CONIFEROUS TREE & TRUNK SIZE
FM	APPROX. LOC. UNDERGROUND SAN. FORCE MAIN LINE	DETECTABLE WARNING PAD
UNK	APPROX. LOC. UNDERGROUND UNKNOWN UTILITY LINE	STEEL FACED CONC. CURB
W	APPROX. LOC. UNDERGROUND WATER LINE	CHAIN LINK FENCE
QB	QUALITY LEVEL B UTILITY LOCATION	DEPRESSED CURB
QC	QUALITY LEVEL C UTILITY LOCATION	EDGE OF CONC.
DC	DEPRESSED CURB	EDGE OF PAVEMENT
H	HYDRANT	GUTTER LINE
SC	SIAMSESE CONNECTION	M.C.
WV	WATER VALVE	F.D.C.
UV	UNKNOWN VALVE	FIRE DEPARTMENT CONNECTION
GV	GAS VALVE	TYPICAL
GM	GAS METER	S.W.L.
EM	ELECTRIC METER	S.Y.L.
MH	UNKNOWN MANHOLE	D.Y.L.
SMH	SANITARY/SEWER MANHOLE	HT
DMH	DRAINAGE/STORM MANHOLE	S.B.
ACU	AIR CONDITIONING UNIT	BLDG
VN	VENT & NUMBER OF VENTS	B.F.P.A.
UP	UTILITY POLE	TOP OF STRUCTURE
UPSP	UTILITY POLE/LIGHT POLE/SOLAR PANEL	BS
		DLN
		SB
		BLDG
		B.F.P.A.
		TOP OF STRUCTURE
		BS
		DLN
		SB
		BLDG
		B.F.P.A.
		TOP OF STRUCTURE
		BS
		DLN
		SB
		BLDG
		B.F.P.A.
		TOP OF STRUCTURE
		BS
		DLN
		SB
		BLDG
		B.F.P.A.
		TOP OF STRUCTURE
		BS
		DLN
		SB
		BLDG
		B.F.P.A.
		TOP OF STRUCTURE
		BS
		DLN
		SB
		BLDG
		B.F.P.A.
		TOP OF STRUCTURE
		BS
		DLN
		SB
		BLDG
		B.F.P.A.
		TOP OF STRUCTURE
		BS
		DLN
		SB
		BLDG
		B.F.P.A.
		TOP OF STRUCTURE
		BS
		DLN
		SB
		BLDG
		B.F.P.A.
		TOP OF STRUCTURE
		BS
		DLN
		SB
		BLDG
		B.F.P.A.
		TOP OF STRUCTURE
		BS
		DLN
		SB
		BLDG
		B.F.P.A.
		TOP OF STRUCTURE
		BS
		DLN
		SB
		BLDG
		B.F.P.A.
		TOP OF STRUCTURE
		BS
		DLN
		SB
		BLDG
		B.F.P.A.
		TOP OF STRUCTURE
		BS
		DLN
		SB
		BLDG
		B.F.P.A.
		TOP OF STRUCTURE
		BS
		DLN
		SB
		BLDG
		B.F.P.A.
		TOP OF STRUCTURE
		BS
		DLN
		SB
		BLDG
		B.F.P.A.
		TOP OF STRUCTURE
		BS
		DLN
		SB
		BLDG
		B.F.P.A.
		TOP OF STRUCTURE
		BS
		DLN
		SB
		BLDG
		B.F.P.A.
		TOP OF STRUCTURE
		BS
		DLN
		SB
		BLDG
		B.F.P.A.
		TOP OF STRUCTURE
		BS
		DLN
		SB
		BLDG
		B.F.P.A.
		TOP OF STRUCTURE
		BS
		DLN
		SB
		BLDG
		B.F.P.A.
		TOP OF STRUCTURE
		BS
		DLN
		SB
		BLDG
		B.F.P.A.
		TOP OF STRUCTURE
		BS
		DLN
		SB
		BLDG
		B.F.P.A.
		TOP OF STRUCTURE
		BS
		DLN
		SB
		BLDG
		B.F.P.A.
		TOP OF STRUCTURE
		BS
		DLN
		SB
		BLDG
		B.F.P.A.
		TOP OF STRUCTURE
		BS
		DLN
		SB
		BLDG
		B.F.P.A.
		TOP OF STRUCTURE
		BS
		DLN
		SB
		BLDG
		B.F.P.A.
		TOP OF STRUCTURE
		BS
		DLN
		SB
		BLDG
		B.F.P.A.
		TOP OF STRUCTURE
		BS
		DLN
		SB
		BLDG
		B.F.P.A.
		TOP OF STRUCTURE
		BS
		DLN
		SB
		BLDG
		B.F.P.A.
		TOP OF STRUCTURE
		BS
		DLN
		SB
		BLDG
		B.F.P.A.
		TOP OF STRUCTURE
		BS
		DLN
		SB
		BLDG
		B.F.P.A.
		TOP OF STRUCTURE
		BS
		DLN
		SB
		BLDG
		B.F.P.A.
		TOP OF STRUCTURE
		BS
		DLN
		SB
		BLDG
		B.F.P.A.
		TOP OF STRUCTURE
		BS
		DLN
		SB
		BLDG
		B.F.P.A.
		TOP OF STRUCTURE
		BS
		DLN
		SB
		BLDG
		B.F.P.A.
		TOP OF STRUCTURE
		BS
		DLN
		SB
		BLDG
		B.F.P.A.
		TOP OF STRUCTURE
		BS
		DLN
		SB
		BLDG
		B.F.P.A.
		TOP OF STRUCTURE
		BS
		DLN
		SB
		BLDG
		B.F.P.A.
		TOP OF STRUCTURE
		BS
		DLN
		SB
		BLDG
		B.F.P.A.
		TOP OF STRUCTURE
		BS
		DLN
		SB
		BLDG
		B.F.P.A.
		TOP OF STRUCTURE
		BS
		DLN
		SB
		BLDG
		B.F.P.A.
		TOP OF STRUCTURE
		BS
		DLN
		SB
		BLDG
		B.F.P.A.
		TOP OF STRUCTURE
		BS
		DLN
		SB
		BLDG
		B.F.P.A.
		TOP OF STRUCTURE
		BS
		DLN
		SB
		BLDG
		B.F.P.A.
		TOP OF STRUCTURE
		BS
		DLN
		SB
		BLDG
		B.F.P.A.
		TOP OF STRUCTURE
		BS
		DLN
		SB
		BLDG
		B.F.P.A.
		TOP OF STRUCTURE
		BS
		DLN
		SB
		BLDG
		B.F.P.A.
		TOP OF STRUCTURE
		BS
		DLN
		SB
		BLDG
		B.F.P.A.
		TOP OF STRUCTURE
		BS
		DLN
		SB
		BLDG
		B.F.P.A.
		TOP OF STRUCTURE
		BS
		DLN
		SB
		BLDG
		B.F.P.A.
		TOP OF STRUCTURE
		BS
		DLN
		SB
		BLDG
		B.F.P.A.
		TOP OF STRUCTURE
		BS
		DLN
		SB</