

PLANTING SPECIFICATIONS

- SCOPE OF WORK
 - THIS WORK SHALL CONSIST OF PERFORMING, CLEARING AND SOIL PREPARATION, FINISH GRADING, PLANTING AND DRAINAGE, INCLUDING ALL LABOR, MATERIALS, TOOLS, EQUIPMENT, AND ANY OTHER APPURTENANCES NECESSARY FOR THE COMPLETION OF THIS PROJECT.
- MATERIALS
 - GENERAL - ALL MATERIALS SHALL MEET OR EXCEED SPECIFICATIONS AS OUTLINED IN THE STATE DEPARTMENT OF TRANSPORTATION (D.O.T.) MANUAL OF ROADWAY AND BRIDGE CONSTRUCTION (LATEST EDITION) OR APPROVED EQUAL.
 - PLANTS - ALL PLANTS SHALL BE HEALTHY OR NORMAL GROWTH, WELL ROOTED, FREE FROM DISEASE AND INSECTS.
 - TOPSOIL - LOAMY SILT, HAVING AN ORGANIC CONTENT NOT LESS THAN 5%, PH RANGE BETWEEN 4.5 - 7, BE FREE OF DEBRIS, ROCKS LARGER THAN TWO INCHES (2"), WOOD, ROOTS, VEGETABLE MATTER AND CLAY CLODS.
 - MULCH - FOUR (4) INCHES DOUBLE SHREDED HARDWOOD BARK MULCH.
- FERTILIZER AND SOIL CONDITIONER - PLANTED AREAS
 - ORGANIC FERTILIZER SHALL BE PROCESSED SCAPER SLODGE WITH MINIMAL CONTENT OF 1% NITROGEN AND 2% PHOSPHORIC ACID, EQUAL TO "NITROHUMUS".
 - ORGANIC FERTILIZER AND SOIL CONDITIONER - SHALL BE "GRO-POWER" AND ORGANIC BASE MATERIALS COMPRISED OF DECOMPOSED ANIMAL AND VEGETABLE MATTER AND COMPOSTED TO SUPPORT BACTERIAL CULTURES, CONTAINING NO POLYESTER OR HUMAN WASTE, GUARANTEED ANALYSIS (5-3-1): NITROGEN 5%, PHOSPHORUS 3%, POTASH 1%, HUMUS AND HUMIC ACIDS.
- GENERAL WORK PROCEDURES
 - LANDSCAPE WORK SHALL COMMENCE AS SOON AS THOSE PORTIONS OF THE SITE ARE AVAILABLE. CONTRACTOR TO UTILIZE WORKMANLIKE STANDARDS IN PERFORMING ALL LANDSCAPE CONSTRUCTION. THE SITE IS TO BE LEFT IN A CLEAN STATE AT THE END OF EACH DAY'S WORK. ALL DEBRIS, MATERIALS, AND TOOLS SHALL BE PROPERLY STOCKPILED OR DISPOSED OF. ALL PAVED SURFACES SHALL BE SWEEP CLEAN AT THE END OF EACH DAY'S WORK.
 - BEFORE AND DURING PRELIMINARY GRADING AND FINISH GRADING, ALL WEEDS AND GRASSES SHALL BE DUG OUT BY THE ROOTS AND DISPOSED OF AT THE CONTRACTOR'S EXPENSE.
 - TOPSOILING
 - CONTRACTOR TO PROVIDE A 4" THICK TOPSOIL LAYER IN ALL PLANTING AREAS. TOPSOIL SHOULD BE SPREAD OVER A PREPARED SURFACE IN A UNIFORM LAYER TO PRODUCE A 4" UNSETTLED THICKNESS. TOPSOIL PRESENT AT THE SITE, IF ANY, MAY BE USED TO SUPPLEMENT TOTAL AMOUNT REQUIRED. CONTRACTOR TO FURNISH AN ANALYSIS OF ON-SITE TOPSOIL UTILIZED IN ALL PLANTING AREAS. ADJUST PH AND NUTRIENT LEVELS AS REQUIRED TO ENSURE AN ACCEPTABLE GROWING MEDIUM.
 - CULTIVATE ALL AREAS TO BE PLANTED TO A DEPTH OF 6". ALL DEBRIS EXPOSED FROM EXCAVATION AND CULTIVATION SHALL BE DISPOSED OF AT THE CONTRACTOR'S EXPENSE. SPREAD EVENLY IN ALL PLANTING AREAS AND TILL (2 DIRECTIONS) INTO TOP 4" WITH THE FOLLOWING PER 1,000 SQ. FT.:
 - 20 POUNDS "GRO-POWER"
 - 100 POUNDS AGRICULTURAL GYPSUM
 - 20 POUNDS NITROFORM (COURSE) 38-0-0 BLUE CHIP
- SOIL CONDITIONING
 - THOROUGHLY TILL ORGANIC MATTER INTO THE TOP 6 TO 12 IN. OF MOST PLANTING SOILS TO IMPROVE THE SOIL'S ABILITY TO RETAIN WATER AND NUTRIENTS. USE COMPOSTED BARK, RECYCLED YARD WASTE OR PEAT MOSS. ALL PRODUCTS SHOULD BE COMPOSTED TO A DARK COLOR AND BE FREE OF PIECES WITH IDENTIFIABLE LEAF OR WOOD STRUCTURE. AVOID MATERIAL WITH A PH HIGHER THAN 7.0.
 - MODIFY HEAVY CLAY OR SILT (MORE THAN 40% CLAY OR SILT) BY ADDING COMPOSTED PINE BARK (UP TO 30% BY VOLUME) AND/OR GYPSUM. COARSE SAND MAY BE USED IF ENOUGH IS ADDED TO BRING THE SAND CONTENT TO MORE THAN 60% OF THE TOTAL MIX. IMPROVE DRAINAGE IN HEAVY SOILS BY PLANTING ON BASED MOUNDS OR BEES AND INCLUDING SUBSURFACE DRAINAGE LINES.
 - MODIFY EXTREMELY SANDY SOILS (MORE THAN 85% SAND) BY ADDING ORGANIC MATTER AND/OR DRY, SHREDDED CLAY LOAM UP TO 30% OF THE TOTAL MIX.
- PLANTING
 - POSITION TREES AND SHRUBS AT THEIR INTENDED LOCATIONS AS PER THE PLANS AND SECURE THE APPROVAL OF THE LANDSCAPE ARCHITECT BEFORE EXCAVATING PITS, MAKING NECESSARY.
 - PLANTING PITS SHALL BE DUG WITH LEVEL BOTTOMS, WITH THE WIDTH TWICE THE DIAMETER OF ROOT BALL. THE ROOT BALL SHALL REST ON UNDISTURBED GRADE. EACH PLANT SHALL BE BACK FILLED WITH THE FOLLOWING PREPARED SOIL MIXED THOROUGHLY:
 - 1 PART PEAT MOSS BY VOLUME
 - 1 PART COW MANURE BY VOLUME
 - 21 GRAM "AGRIFORM" PLANTING TABLETS AS FOLLOWS:
 - LARGER PLANTS (2) TWO TABLETS PER 1/2" DIAM. OF TRUNK CALIPER
 - SMALLER PLANTS (1) ONE TABLET PER 1/2" DIAM. OF TRUNK CALIPER
 - PREPARED SOIL SHALL BE TAMPED FIRMLY AT BOTTOM OF PIT. FILL PREPARED SOIL AROUND BALL OF PLANT 1/2" WAY, AND INSERT PLANT TABLETS. COMPLETE BACK FILL AND WATER THOROUGHLY. AVOID MATERIAL WITH A PH HIGHER THAN 7.0.
 - ALL PLANTS SHALL BE SET SO THAT THEY BEAR THE SAME RELATION TO THE REQUIRED GRADE AS THEY BORE TO THE NATURAL GRADE BEFORE BEING TRANSPORTED.
 - PREPARE RAISED EARTH BASIN AS WIDE AS PLANTING HOLE OF EACH TREE.
 - WATER IMMEDIATELY AFTER PLANTING. WATER SHALL BE APPLIED TO EACH TREE AND SHRUB IN SUCH MANNER AS NOT TO DISTURB BACK FILL AND TO THE EXTENT THAT ALL MATERIAL IN THE PLANTING HOLE IS THOROUGHLY SATURATED.
 - PRUNE ALL PROPOSED TREES DIRECTLY ADJACENT TO WALKWAYS TO A MIN. OF 7' BRANCHING HEIGHT.
- GROUND COVER
 - ALL GROUND COVER AREAS SHALL RECEIVE A 1/4" LAYER OF HUMUS BAKED INTO THE TOP 1" OF PREPARED SOIL PRIOR TO PLANTING GROUND COVER.
 - SPACING AND VARIETY OF GROUND COVER SHALL BE AS SHOWN ON DRAWINGS.
 - IMMEDIATELY AFTER GROUND COVER IS PLANTED, CONTRACTOR SHALL THOROUGHLY WATER GROUND COVER.
 - ALL GROUND COVER AREAS SHALL BE TREATED WITH A PRE-EMERGENT BEFORE FINAL LANDSCAPE INSPECTION. GROUND COVER AREAS SHALL BE WEEDED PRIOR TO APPLYING PRE-EMERGENT. PRE-EMERGENT TO BE APPLIED AS PER MANUFACTURER'S RECOMMENDATION.
- FINISH GRADING
 - ALL AREAS WILL BE RECEIVED BY THE CONTRACTOR AT SUBSTANTIALLY PLUS/MINUS 1 FOOT OF FINISH GRADE.
 - ALL LAWN AND PLANTING AREAS SHALL BE GRADUALLY SLOPED TO A UNIFORM FINISH GRADE WITH NO ABRUPT CHANGE OF SURFACE, UNLESS OTHERWISE DIRECTED BY LANDSCAPE ARCHITECT. SOIL AREAS ADJACENT TO THE BUILDINGS SHALL SLOPE AWAY.
 - ALL PLANTING AREAS SHALL BE GRADED AND MANICURED TO ALLOW FREE FLOW OF SURFACE WATER.
- GUARANTEE
 - CONTRACTOR SHALL GUARANTEE ALL PLANTS FOR A PERIOD OF ONE (1) YEAR FROM ACCEPTANCE OF JOB. OWNER TO SECURE A MAINTENANCE BOND FROM THE CONTRACTOR FOR TEN PERCENT (10%) OF THE VALUE THE LANDSCAPE INSTALLATION WHICH WILL BE RELEASED AT THE COMPLETION OF THE GUARANTEE PERIOD AND PASSES A FINAL INSPECTION BY THE OWNER OR OWNER'S REPRESENTATIVE.
- CLEANUP
 - UPON THE COMPLETION OF ALL PLANTING WORK AND BEFORE FINAL ACCEPTANCE, THE CONTRACTOR SHALL REMOVE ALL MATERIAL, EQUIPMENT, AND DEBRIS RESULTING FROM WORK. ALL PAVED AREAS SHALL BE BROOM CLEANED AND THE SITE LEFT IN A NEAT AND ACCEPTABLE CONDITION AS APPROVED BY THE OWNER'S AUTHORIZED REPRESENTATIVE.
 - MAINTAIN TREES, SHRUBS AND OTHER PLANTS BY PRUNING, CULTIVATING AND WEEDING AS REQUIRED FOR HEALTHY GROWTH. RESTORE PLANTING SAUCERS, TIGHTEN AND BRUSH STAKE AND GUY WIRE TO PROPER GRADES OR VERTICAL POSITION AS REQUIRED. RESTORE OR REPLACE DAMAGED WRAPPINGS. SPRAY WITH HERBICIDE AS REQUIRED TO KEEP TREES AND SHRUBS FREE OF INSECTS AND DISEASE.
 - MAINTAIN LAWNS BY MOWING, TRIMMING, AND OTHER OPERATIONS SUCH AS FERTILIZING, REGRADING, AND REPLANTING AS REQUIRED TO ESTABLISH A SMOOTH, ACCEPTABLE LAWN, FREE OF ERODED OR BARE AREAS.
- MAINTENANCE (ALTERNATE BID) COST PER MONTH AFTER INITIAL 90-DAY MAINTENANCE PERIOD.

PLANTING NOTES

- PLANT MATERIAL SHALL BE FURNISHED AND INSTALLED AS INDICATED, INCLUDING ALL LABOR, MATERIALS, PLANTS, EQUIPMENT, INCIDENTALS, AND CLEAN-UP.
- THE CONTRACTOR SHALL BE RESPONSIBLE FOR PLANTING AT CORRECT GRADES AND ALIGNMENT. LAYOUT TO BE APPROVED BY LANDSCAPE ARCHITECT PRIOR TO INSTALLATION.
- PLANTS SHALL BE TYPICAL OF THEIR SPECIES AND VARIETY; HAVE NORMAL GROWTH HABITS; WELL DEVELOPED BRANCHES, DENSELY FOLIATED, WOODRUSO ROOT SYSTEMS, AND BE FREE FROM DEFECTS AND INJURIES.
- CONTRACTOR SHALL REPORT ANY SOIL OR DRAINAGE CONDITIONS CONSIDERED DETRIMENTAL TO THE GROWTH OF PLANT MATERIAL.
- ALL PLANT MATERIAL SHALL BE GUARANTEED TO BE IN VIGOROUS GROWING CONDITION. PROVISION SHALL BE MADE FOR A GROWTH GUARANTEE OF AT LEAST ONE (1) YEAR FROM THE DATE OF ACCEPTANCE FOR TREES AND SHRUBS. REPLACEMENTS SHALL BE MADE AT THE BEGINNING OF THE FIRST SUCCESSFUL PLANTING SEASON. GUARANTEE SHALL BE EQUAL TO THAT STATED ABOVE.
- INsofar as it is practicable, PLANT MATERIAL SHALL BE PLANTED ON THE DAY OF DELIVERY. IN THE EVENT THIS IS NOT POSSIBLE, THE CONTRACTOR SHALL PROTECT STOCK NOT PLANTED. PLANTS SHALL NOT REMAIN UNPLANTED FOR LONGER THAN A THREE DAY PERIOD AFTER DELIVERY. ANY PLANTS NOT INSTALLED DURING THIS PERIOD WILL BE REJECTED.
- QUALITY AND SIZE OF PLANTS, SPREAD OF ROOTS, AND SIZE OF BALLS SHALL BE IN ACCORDANCE WITH ANSI Z60.1 (REV. 2001) "AMERICAN STANDARD FOR NURSERY STOCK" AS PUBLISHED BY THE AMERICAN ASSOCIATION OF LANDSCAPE ARCHITECTS.
- ALL PLANTS SHALL BE PLANTED IN AMENDED TOPSOIL THAT IS THOROUGHLY WATERED AND TAMPED AS BACK FILLING PROGRESSES. PLANTING MIX TO BE AS SHOWN ON PLANTING DETAILS. LARGE PLANTING AREAS TO INCORPORATE FERTILIZER AND SOIL CONDITIONERS AS STATED IN PLANTING SPECIFICATIONS.
- PLANTS SHALL NOT BE CUT BACK OR ROPE AT ANY POINT AS TO DAMAGE THE BARK OR BREAK BRANCHES. PLANTS SHALL BE HANDLED FROM THE BOTTOM OF THE BALL ONLY.
- PLANTING OPERATIONS SHALL BE PERFORMED DURING PERIODS WITHIN THE PLANTING SEASON WHEN WEATHER AND SOIL CONDITIONS ARE SUITABLE AND IN ACCORDANCE WITH ACCEPTED LOCAL PRACTICE. PLANTS SHALL NOT BE INSTALLED IN TOPSOIL THAT IS IN A MUDDY OR FROZEN CONDITION. ALL PLANT MATERIAL SHALL BE SPRAYED WITH HERBICIDE AS PER MANUFACTURER'S INSTRUCTIONS.
- NO PLANT, EXCEPT GROUND COVERS, SHALL BE PLANTED LESS THAN TWO FEET FROM EXISTING STRUCTURES AND SIDEWALKS.
- ALL PLANTS PLUMB AND STRAIGHT, SET AT SUCH LEVEL THAT A NORMAL OR NATURAL RELATIONSHIP TO THE CROWN OF THE PLANT WITH THE GROUND SURFACE WILL BE ESTABLISHED. LOCATE PLANT IN THE CENTER OF THE PIT.
- ALL INJURED ROOTS SHALL BE PRUNED TO MAKE CLEAN ENDS BEFORE PLANTING. UTILIZING CLEAN, SHARP TOOLS. IT IS ADVISABLE TO PRUNE APPROXIMATELY 1/3 OF THE GROWTH OF LARGE TREES (1" CALIPER AND OVER) BY THE REMOVAL OF SUPERFLUOUS BRANCHES, THOSE WHICH CROSS, THOSE WHICH RUN PARALLEL, ETC. MAIN LEADER OF TREE SHALL NOT BE CUT BACK. LONG SIDE BRANCHES, HOWEVER, MUST BE SHORTENED.
- EACH TREE AND SHRUB SHALL BE PRUNED IN ACCORDANCE WITH STANDARD HORTICULTURAL PRACTICE TO PRESERVE NATURAL CHARACTER OF PLANT. PRUNING SHALL BE DONE WITH CLEAN SHARP TOOLS.
- ALL EXISTING TREES TO REMAIN SHALL BE PRUNED TO REMOVE ANY DAMAGED BRANCHES AS A RESULT OF CONSTRUCTION OPERATIONS. ALL EXISTING TREES SHALL BE FERTILIZED WITH A REGULAR GRADE FERTILIZER (5-10-5) UPON COMPLETION OF WORK. THE ENTIRE LIMB OF ANY DAMAGED BRANCH SHALL BE CUT OFF AT THE TRUNK. CONTRACTOR TO ENSURE THAT CUTS ARE SMOOTH AND STRAIGHT. ANY EXPOSED ROOTS SHALL BE CUT BACK WITH SHARP TOOLS AND FILLED AROUND WITH TOPSOIL. COMPLETELY SATURATE THESE AREAS WITH WATER. ROOTS SHALL NOT BE LEFT EXPOSED FOR MORE THAN ONE (1) DAY. CONTRACTOR IS TO PROTECT ALL EXISTING TREES TO REMAIN BY ERECTING PROTECTION FENCES AT THE PROPOSED PLANTING LINE. THIS WILL ENSURE NO COMPACTING OF THE ROOT MASS.
- ALL PLANTING BEES SHALL BE MULCHED WITH A LAYER OF DOUBLE SHREDDED HARDWOOD BARK MULCH.
- NEW PLANTING AREAS AND SOIL SHALL BE PROTECTION BRACKETED OR WATERED TO ESTABLISH A PROTECTIVE PLANTING LINE.
- PRIOR TO THE ISSUANCE OF ANY CERTIFICATE OF OCCUPANCY, THE PROPOSED LANDSCAPE AS SHOWN ON THE APPROVED LANDSCAPE PLAN MUST BE INSTALLED, INSPECTED AND APPROVED BY THE MUNICIPAL LANDSCAPE ARCHITECT AND LANDSCAPE ARCHITECT SHALL TAKE INTO ACCOUNT SEASONAL CONSIDERATIONS IN THIS REGARD AS FOLLOWS: THE PLANTING OF TREES, SHRUBS, VINES OR GROUND COVER AS REQUIRED BY OR ASSOCIATED WITH SUBDIVISION OR SITE PLAN APPROVAL BY THE PLANNING BOARD OR ZONING BOARD OF ADJUSTMENT SHALL BE INSTALLED DURING THE FOLLOWING PLANTING SEASONS:

TYPE	DATES
PLANTS	3/15 TO 12/15
LAWN	3/15 TO 6/15 9/15 TO 12/15


FURTHERMORE, THE FOLLOWING TREE VARIETIES SHALL NOT BE PLANTED DURING THE FALL PLANTING SEASON DUE TO THE HAZARDS ASSOCIATED WITH DIGGING THESE TREES IN THIS SEASON:

ACER RUBRUM	POPULUS VARIETIES
BETULA VARIETIES	PRUNUS VARIETIES
CORYLUS VARIETIES	QUERCUS VARIETIES
FRAXINUS VARIETIES	SALEA WEEPING VARIETIES
KOELBUERIA	TELA TORRENTOSA
LEUCODENDRON STYACIFLUA	ZELKOVA VARIETIES
LIPODENDRON TULIPIFERA	
PLATANUS ACERIFOLIA	

ANY PLANTINGS INSTALLED IN CONFLICT WITH THIS REQUIREMENT MUST RECEIVE THE WRITTEN APPROVAL BY THE MUNICIPAL ENGINEER OR LANDSCAPE ARCHITECT, PRIOR TO PLANTING. FAILURE TO COMPLY WITH THESE REQUIREMENTS WILL REQUIRE THE REMOVAL OF THE PLANTING IN QUESTION. THIS REQUIREMENT DOES NOT APPLY TO SEEDING OR SOODING OR PLANTINGS SPECIFICALLY FOR SOIL STABILIZATION PURPOSES. THE PLANTING ASSOCIATED WITH ANY LOT GIVEN A CERTIFICATE OF OCCUPANCY OUTSIDE THESE PERIODS SHALL BE PROVIDED DURING THE PREVIOUS OR NEXT APPROPRIATE SEASON.

19. ALL DISTURBED AREAS TO BE TREATED WITH TOPSOIL SEED SOD STABILIZATION METHOD.

THIS PLAN SET IS FOR PERMITTING PURPOSES ONLY AND MAY NOT BE USED FOR CONSTRUCTION

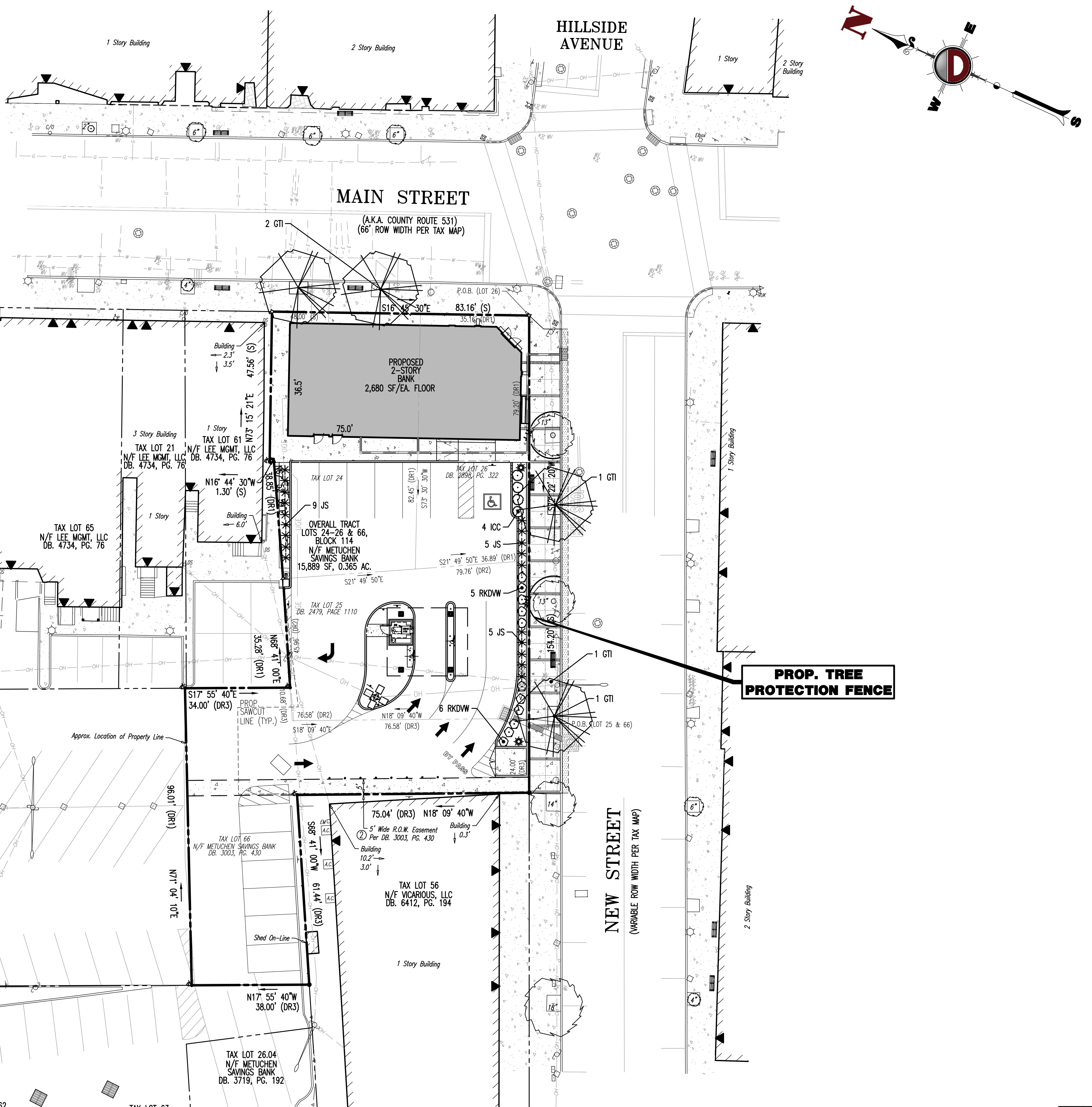


DYNAMIC ENGINEERING
LAND DEVELOPMENT CONSULTING • PERMITTING • GEOTECHNICAL • ENVIRONMENTAL • SURVEY • PLANNING & ZONING

Little Combs, New Jersey 1: 732.974.0198 | Chester, New Jersey 1: 908.879.9229 | Newark, New Jersey 1: 973.253.2200 | Toms River, New Jersey 1: 732.974.0198
Allen, Texas 1: 972.324.2100 | Houston, Texas 1: 281.789.6400
Newtown, Pennsylvania 1: 281.665.0276 | Oakley, Florida 1: 351.921.8570

<p>TITLE: LANDSCAPING PLAN</p>	
<p>PROJECT: MANASQUAN BANK PROPOSED BANK W/ DRIVE-THRU BLOCK 114, LOTS 24, 25, 26, & 66 429 MAIN STREET BOROUGH OF METUCHEN, MIDDLESEX COUNTY, NEW JERSEY</p>	<p>JOB No: 0036-99-007 DATE: 12/05/2019 DRAWN BY: KJH DESIGNED BY: KCK CHECKED BY: JAP SCALE: (H) 1"=20' (V) SHEET No: 7</p>
<p>KYLE C. KAVINSKI PROFESSIONAL ENGINEER NEW JERSEY LICENSE No. 52985</p>	<p>JOHN A. PALUS PROFESSIONAL ENGINEER NEW JERSEY LICENSE No. 41975</p>

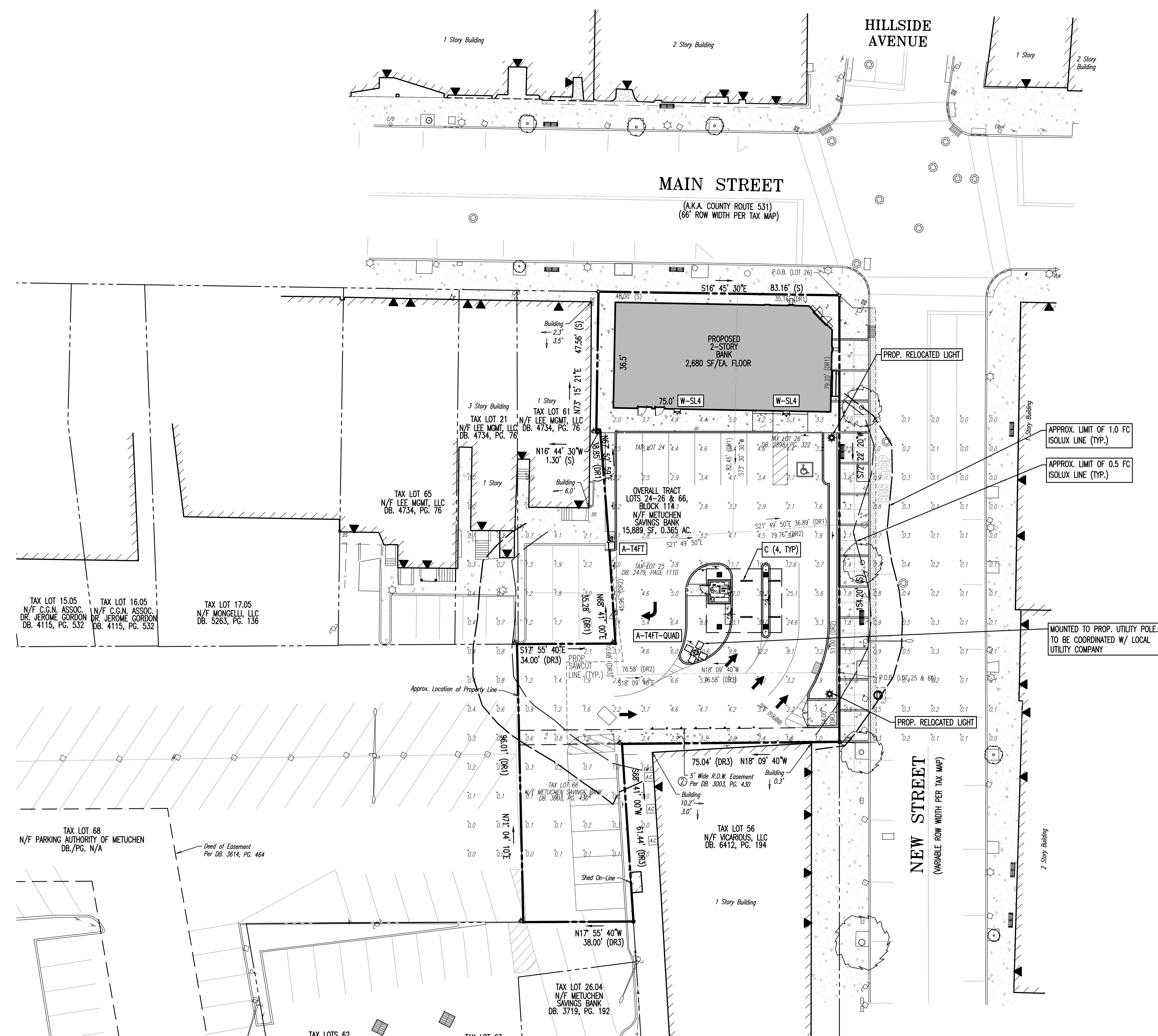
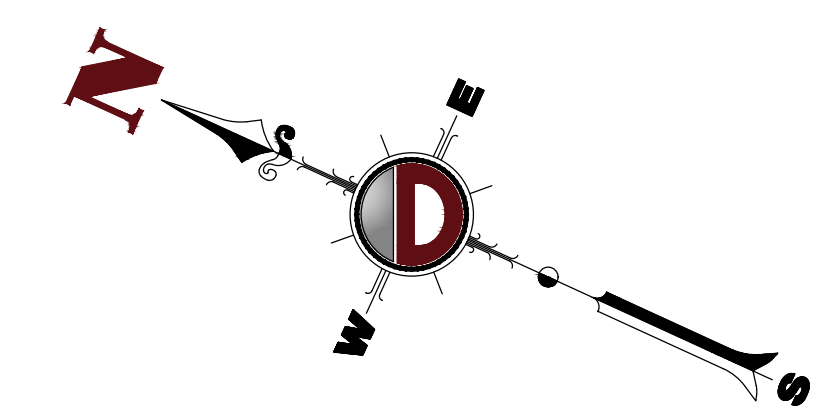
8 Robbins Street - Suite 102
Toms River, NJ 08753
T: 732.974.0198
F: 732.974.3521
www.dynancc.com



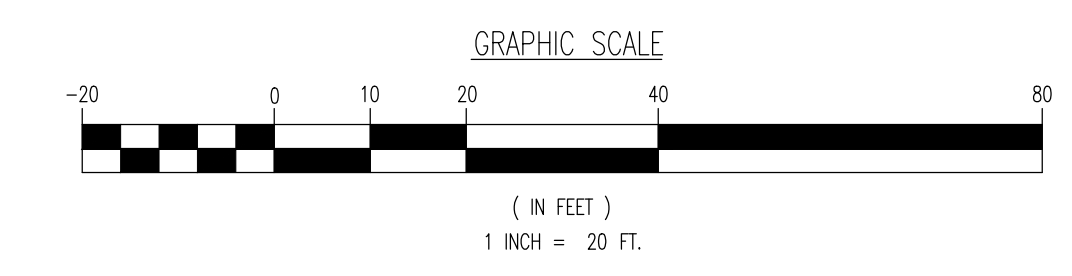
KEY	QTY	BOTANICAL NAME	COMMON NAME	SIZE	REMARKS
SHADE TREES (S)	4	OLEDTISA TRACANTHOS NERIMS	THORNLESS HONEYLOCUST	MIN. 3" CAL.	B+B
EVERGREEN SHRUBS (S)	11	LEX CRENATA 'COMPACT'	COMPACT JAPANESE HOLLY	24-30"	#3 CAN
RKOVW	75	RHOCHODENDRON X KURUME 'DELAWARE VALLEY WHITE'	'DELAWARE VALLEY WHITE' AZALEA	18-24"	#3 CAN
GROUND COVER	19	JUNIPERUS CHINENSIS VAR. SARGENTI	SARGENT JUNIPER	15-18" SPRD.	#3 CAN

NOTE: IF ANY DISCREPANCIES OCCUR BETWEEN AMOUNTS SHOWN IN THE PLAN AND THE PLANT LIST, THE PLAN SHALL DICTATE.

SEE SHEET 10 OF 12 FOR LANDSCAPING PLAN DETAILS



- GENERAL NOTES**
- THIS LIGHTING PLAN ILLUSTRATES ILLUMINATION LEVELS CALCULATED FROM LABORATORY DATA TAKEN UNDER CONTROLLED CONDITIONS IN ACCORDANCE WITH ILLUMINATING ENGINEERING SOCIETY OF NORTH AMERICA (IESNA) APPROVED METHODS. ACTUAL SITE ILLUMINATION LEVELS AND PERFORMANCE OF LUMINAIRES MAY VARY DUE TO VARIATIONS IN WEATHER, ELECTRICAL VOLTAGE, TOLERANCE IN LAMPS, AND OTHER RELATED VARIABLE FIELD CONDITIONS.
 - ALL EXISTING CONDITIONS LIGHTING LEVELS ARE REPRESENTATIVE OF AN APPROXIMATION UTILIZING LABORATORY DATA FOR SIMILAR FIXTURES AND/OR ACTUAL FIELD MEASUREMENTS TAKEN WITH A LIGHT METER. DUE TO FACTORS SUCH AS FIXTURE MAINTENANCE, EQUIPMENT TOLERANCES, WEATHER CONDITIONS, ETC., ACTUAL LIGHTING LEVELS MAY DIFFER AND THE LIGHTING LEVELS DEPICTED ON THIS PLAN SHOULD BE CONSIDERED AS APPROXIMATE.
 - CONDUITS SHALL BE INSTALLED A MINIMUM OF 2 FEET BEHIND GUIDERAIL POSTS.
 - ALL WIRING METHODS AND EQUIPMENT CONSTRUCTION SHALL CONFORM TO THE CURRENT NATIONAL ELECTRICAL CODE.
 - REFER TO ARCHITECTURAL PLANS FOR LIGHTING DIAGRAM.



SEE SHEET 12 OF 12 FOR LIGHTING PLAN DETAILS

SYMBOL	QUANTITY	LABEL	WATTAGE	MOUNTING HEIGHT	ARRANGEMENT	LIGHT LOSS FACTOR	MANUFACTURER	DESCRIPTION	IES FILE
	2	W-SL4	59	13.5'	SINGLE	1.000	GALLEON	GALLEON WALL TYPE 4 W/ SPILL CONTROL	CWC-AF-01-LED-E1-SL4-7030.ies
	4	C	73	11.5'	SINGLE	1.000	SELUX	SELUX M125 LED DIRECT	L125-2835-40-SD-3-04-LMN.ies
	1	A-14FT	59	20'	SINGLE	1.000	GALLEON	GALLEON AREA LIGHT TYPE 4 FORWARD THROW	GLEON-AF-01-LED-E1-14FT-7030.ies
	1	A-14FT-QUAD	59	20'	4 @ 90 DEGREES	1.000	GALLEON	GALLEON AREA LIGHT TYPE 4 FORWARD THROW	GLEON-AF-01-LED-E1-14FT-7030.ies

NOTE: ALL LIGHT FIXTURES SHALL BE LED, NON-GLARE, FULL CUT OFF AND SHALL NOT EXCEED A COLOR TEMPERATURE OF 5,000K.
ISO CURVES ARE MAINTAINED AND SHOWN AT 0.5 AND 0.1 FC.
(FM) - FLUSH MOUNT FOUNDATION (PED) - PEDESTAL FOUNDATION
THE CALCULATIONS SHOWN WERE MADE UTILIZING ACCEPTED PROCEDURES OF THE ILLUMINATING ENGINEERING SOCIETY OF NORTH AMERICA. VARIATIONS IN LAMP OUTPUT, BALLAST OUTPUT, LINE VOLTAGE, DIRT DEPRECIATION, AND OTHER FACTORS MAY AFFECT ACTUAL RESULTS. UNLESS OTHERWISE STATED, ALL RESULTS ARE MAINTAINED VALUES, UTILIZING ACCEPTED LIGHT LOSS FACTORS (LLF).

STATISTICAL AREA SUMMARY					
LABEL	AVERAGE	MAXIMUM	MINIMUM	AVG./MIN.	DESCRIPTION
CANOPY	30.95	39.7	22.0	1.41	LIGHT LEVELS TAKEN BENEATH CANOPY
PARKING	3.65	5.4	2.1	1.74	LIGHT LEVELS TAKEN WITHIN PARKING AREAS
PAVEMENT	4.70	25.1	0.6	7.83	LIGHT LEVELS TAKEN WITHIN DRIVE AISLES
SIDEWALK	3.61	5.3	2.0	1.81	LIGHT LEVELS TAKEN WITHIN SIDEWALK

THIS PLAN SET IS FOR PERMITTING PURPOSES ONLY AND MAY NOT BE USED FOR CONSTRUCTION

DYNAMIC ENGINEERING
LAND DEVELOPMENT CONSULTING • PERMITTING • GEOTECHNICAL • ENVIRONMENTAL • SURVEY • PLANNING & ZONING

8 Robbins Street - Suite 102
Toms River, NJ 08753
T: 732.974.0198
F: 732.974.3521
www.dynamiceng.com

TITLE: **LIGHTING PLAN**

PROJECT: **MANASQUAN BANK PROPOSED BANK W/ DRIVE-THRU**
BLOCK 114, LOTS 24, 25, 26, & 66
429 MAIN STREET
BOROUGH OF METUCHEN, MIDDLESEX COUNTY, NEW JERSEY

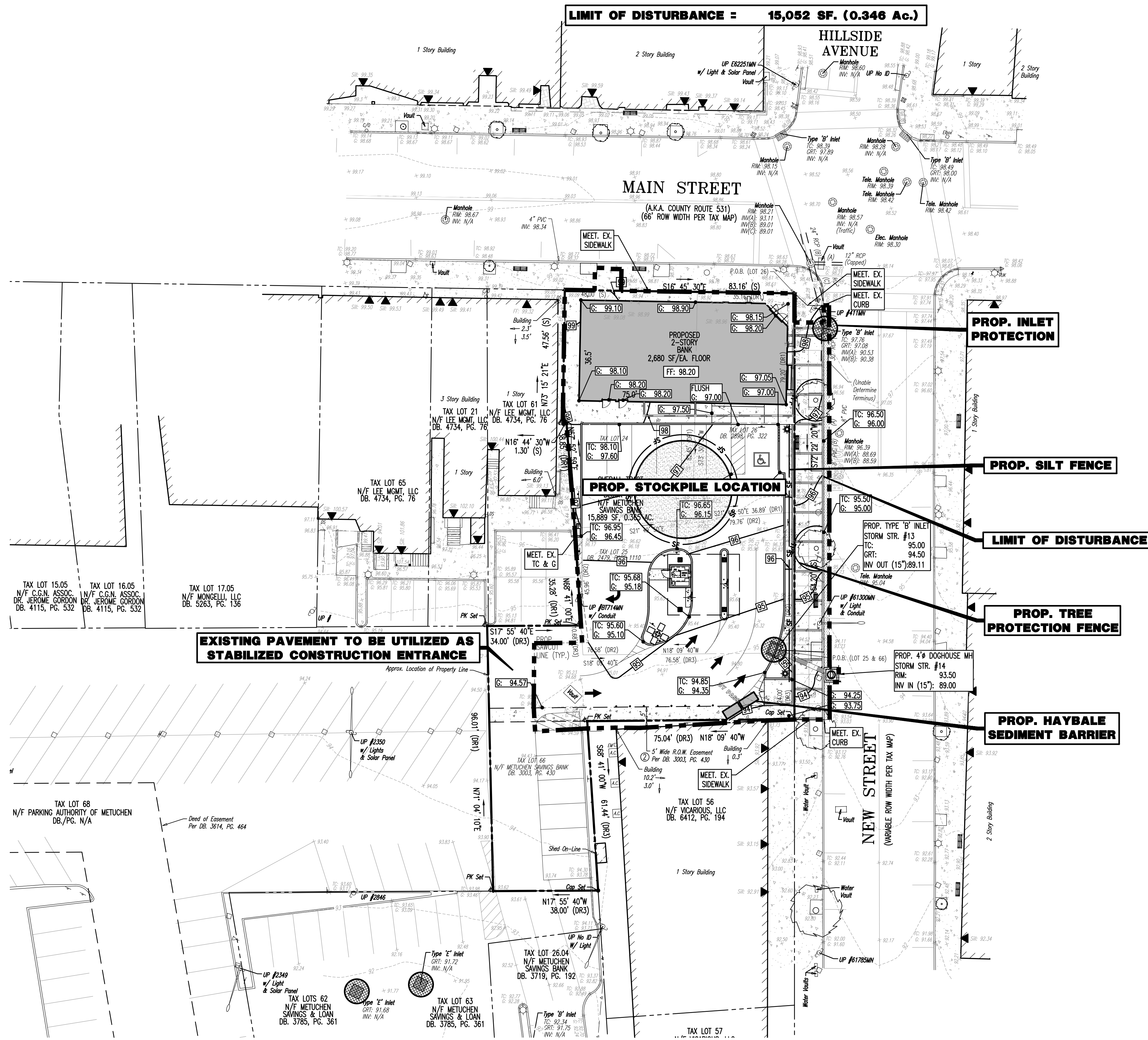
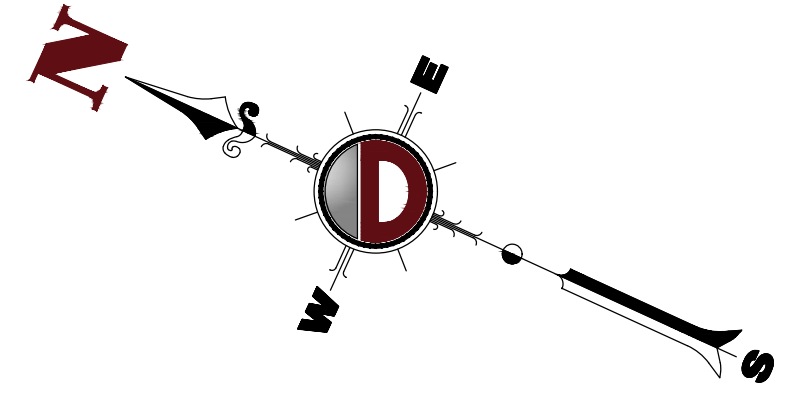
JOB No: 0036-99-007 DATE: 12/05/2019
DRAWN BY: KJH SCALE: (H) 1"=20' (V)
DESIGNED BY: KCK SHEET No:
CHECKED BY: JAP
CHECKED BY: -

KYLE C. KAVINSKI PROFESSIONAL ENGINEER
NEW JERSEY LICENSE No. 52985

JOHN A. PALUS PROFESSIONAL ENGINEER
NEW JERSEY LICENSE No. 41975

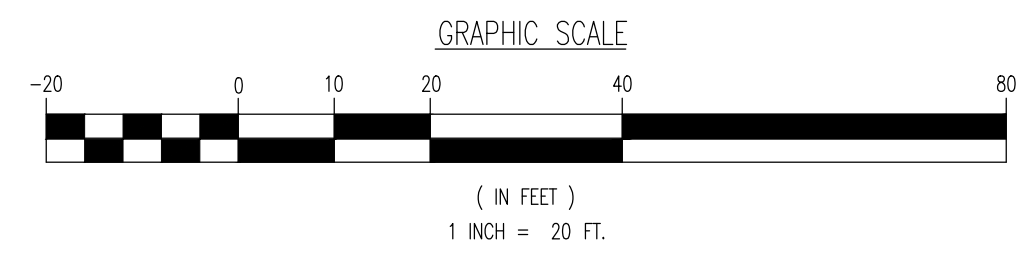
811 PROTECT YOURSELF
ALL UTILITIES REQUIRE VERIFICATION BY A QUALIFIED PERSONNEL. IF ANY UTILITY PRESENCE IS SUSPECTED THE USER'S SERVICE PROVIDER IS TO BE NOTIFIED FOR STATE-SPECIFIC DIRECT PHONE NUMBERS VISIT WWW.CALL811.COM

Rev. # 2



EROSION CONTROL LEGEND

- PROP. LIMIT OF DISTURBANCE LINE
- PROP. SILT FENCE LINE
- PROP. TREE PROTECTION FENCE LINE
- PROP. INLET FILTER
- PROP. HAYBALE SEDIMENT BARRIER



THIS PLAN SET IS FOR PERMITTING PURPOSES ONLY AND MAY NOT BE USED FOR CONSTRUCTION

DYNAMIC ENGINEERING
 LAND DEVELOPMENT CONSULTING • PERMITTING • GEOTECHNICAL • ENVIRONMENTAL • SURVEY • PLANNING & ZONING

8 Robbins Street - Suite 102
 Toms River, NJ 08753
 T: 732.974.0198
 F: 732.974.3521
 www.dynamicoc.com

TITLE: SOIL EROSION & SEDIMENT CONTROL PLAN	
PROJECT: MANASQUAN BANK PROPOSED BANK W/ DRIVE-THRU BLOCK 114, LOTS 24, 25, 26, & 66 429 MAIN STREET BOROUGH OF METUCHEN, MIDDLESEX COUNTY, NEW JERSEY	JOB No: 0036-99-007 DATE: 12/05/2019 DRAWN BY: KJH DESIGNED BY: KCK CHECKED BY: JAP
KYLE C. KAVINSKI PROFESSIONAL ENGINEER NEW JERSEY LICENSE No. 52985	JOHN A. PALUS PROFESSIONAL ENGINEER NEW JERSEY LICENSE No. 41975
9 OF 12 Rev. # 2	

SEE SHEET 10 OF 12 FOR SOIL EROSION & SEDIMENT CONTROL PLAN DETAILS & NOTES

Product Ver: 24.0s (LMS Tech) - 10:19 AM, By: kheego, File: P:\BECPC PROJECTS\0036 Longo Architects\0036907\02.dwg, 09 SOIL EROSION & SEDIMENT CONTROL PLAN