

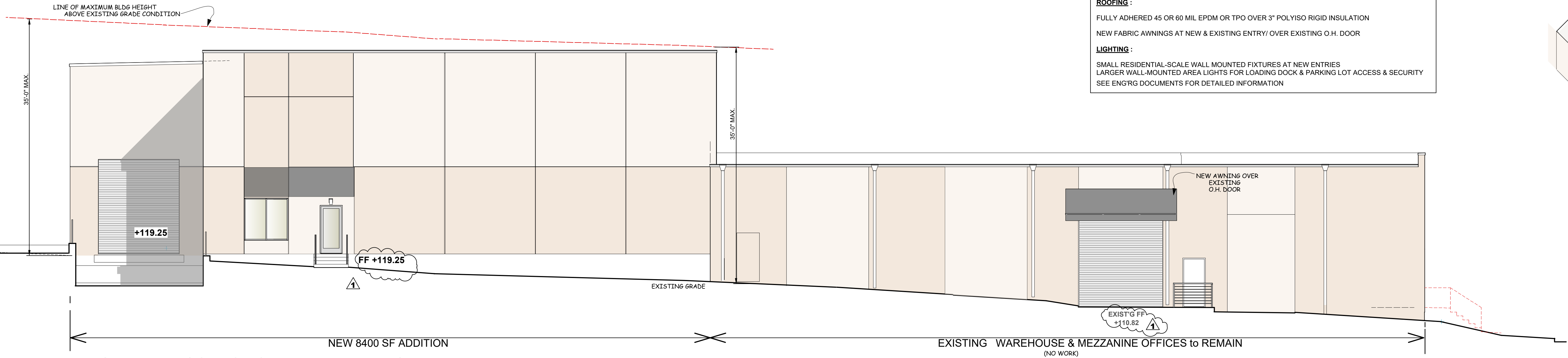
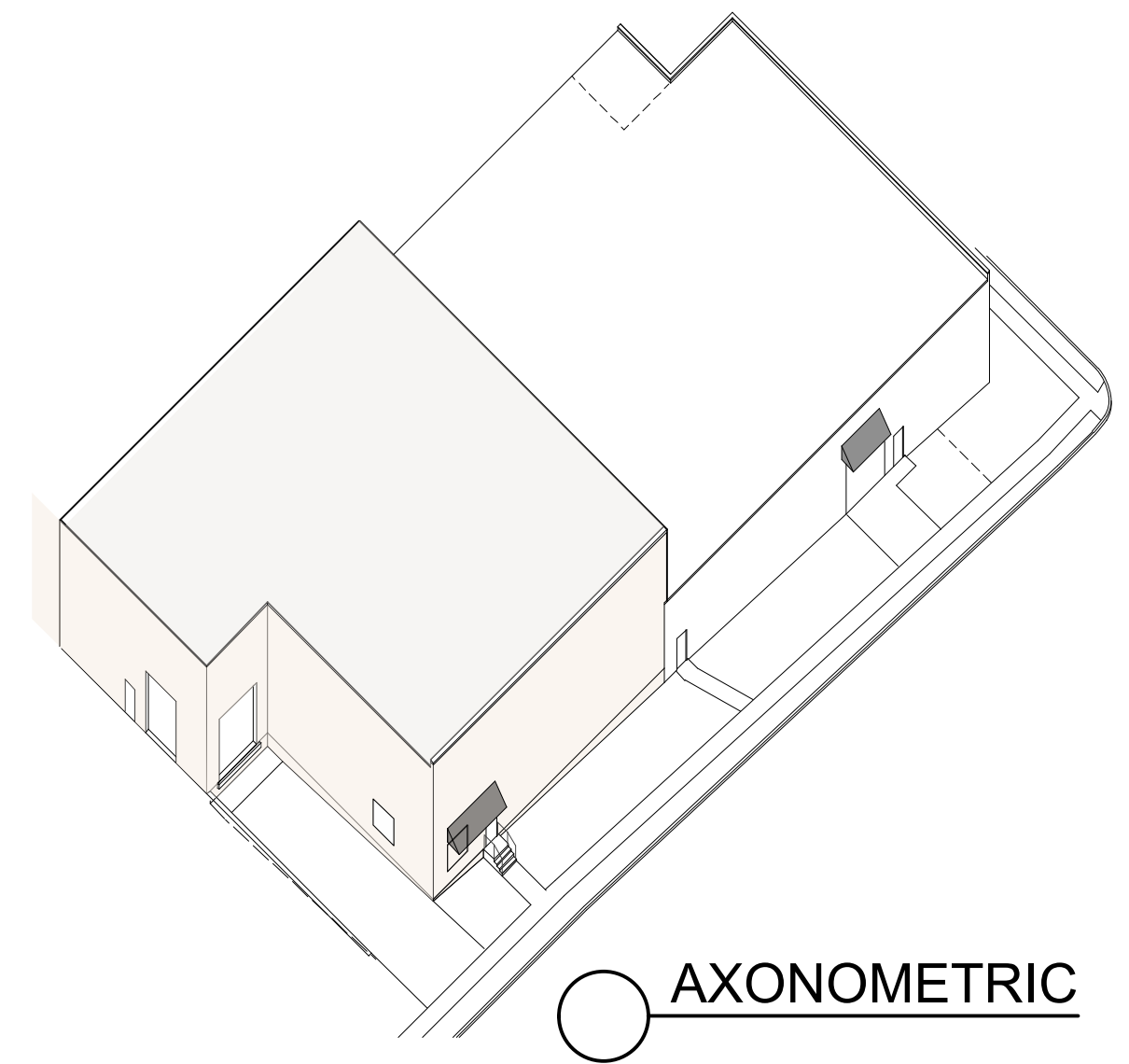
**EXTERIOR FINISH KEY**

**WALL FINISHES :**  
 MASONRY CMU WALLS w/ MODIFIED STUCCO w/ EIFS FINISH OVER AT FRONT AND SIDES  
 MASONRY CMU WALLS - PAINTED AT REAR WALL ONLY  
 ROOF COPING GUTTERS & LEADERS WILL BE COATED OR ANODIZED ALUMINUM

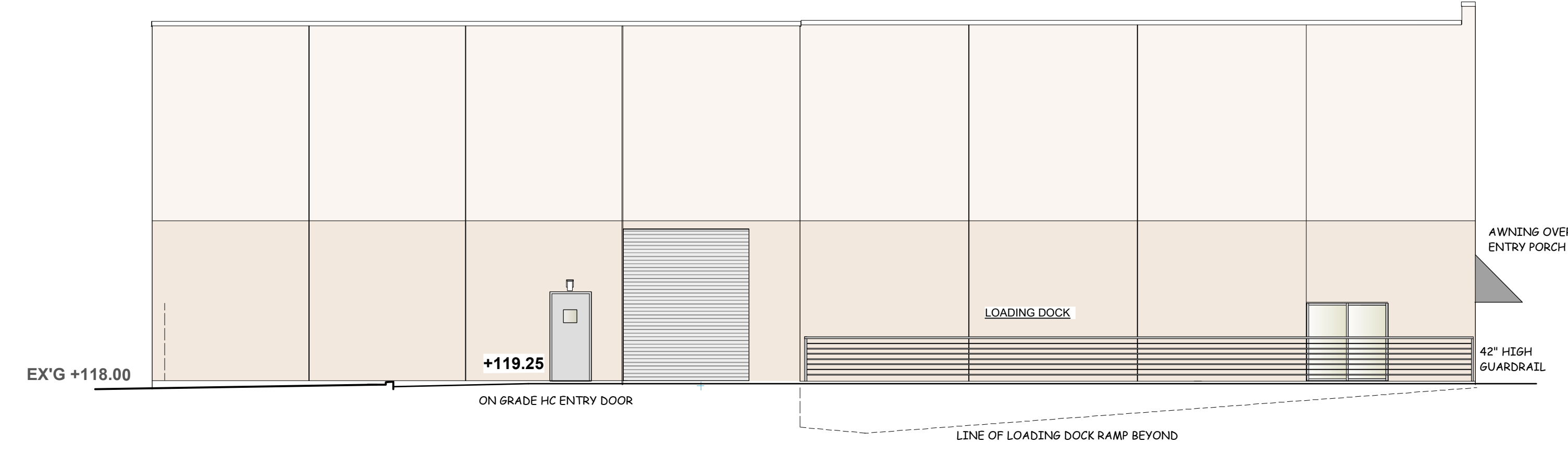
**WINDOWS & DOORS :**  
 INSULATED ALUMINUM STOREFRONT UNITS - ANODIZED TEMPERED AS REQUIRED

**ROOFING :**  
 FULLY ADHERED 45 OR 60 MIL EPDM OR TPO OVER 3" POLYISO RIGID INSULATION  
 NEW FABRIC AWNINGS AT NEW & EXISTING ENTRY/ OVER EXISTING O.H. DOOR

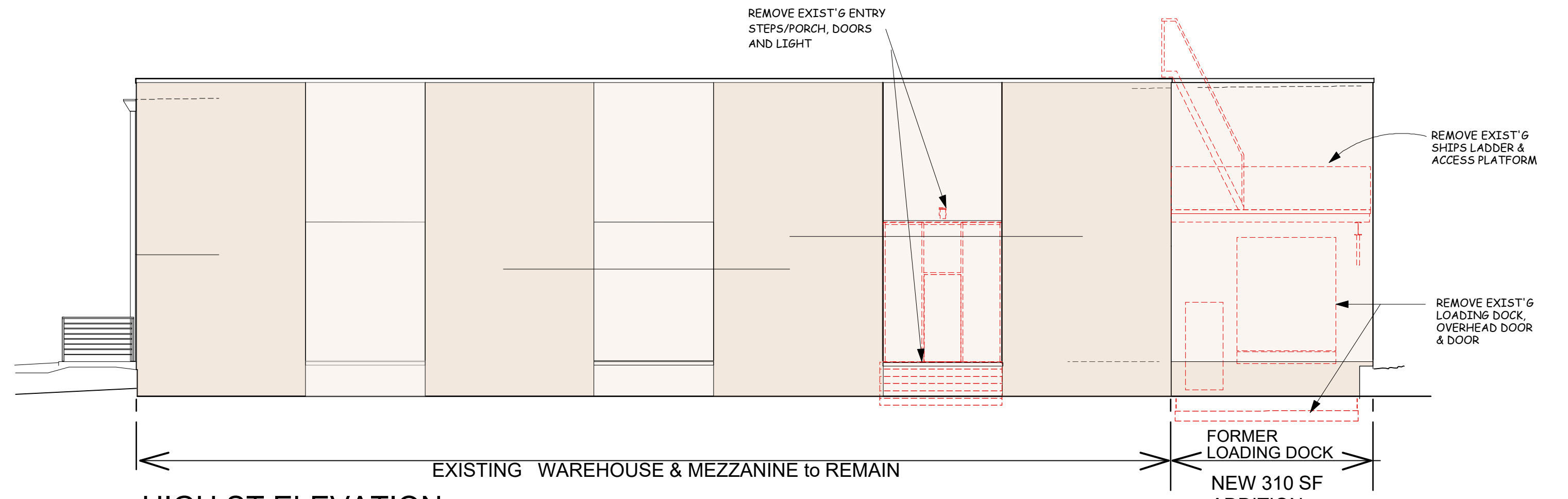
**LIGHTING :**  
 SMALL RESIDENTIAL-SCALE WALL MOUNTED FIXTURES AT NEW ENTRIES  
 LARGER WALL-MOUNTED AREA LIGHTS FOR LOADING DOCK & PARKING LOT ACCESS & SECURITY  
 SEE ENGRG DOCUMENTS FOR DETAILED INFORMATION



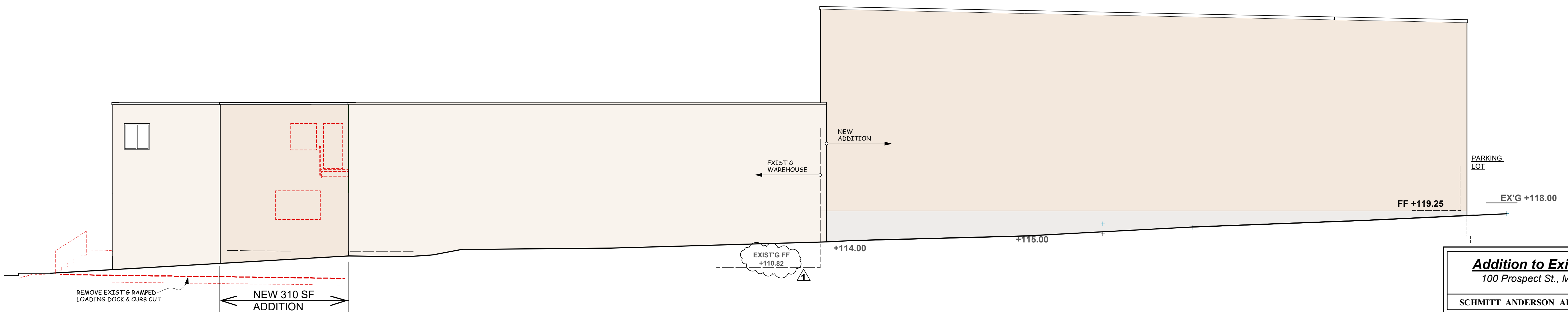
1 NORTH - PROSPECT STREET ELEVATION  
 1/8" = 1'-0"



2 SOUTH - PARKING LOT ELEVATION  
 1/8" = 1'-0"



3 HIGH ST ELEVATION  
 1/8" = 1'-0"



4 WEST - REAR ELEVATION  
 1/8" = 1'-0"

**Addition to Existing Warehouse**  
 100 Prospect St., Metuchen, New Jersey

**A-2**  
 March 25, 2022

SCHMITT ANDERSON ARCHITECTS 10 Hillside Avenue Metuchen NJ 08840

REVISED August 2, 2022  
 REVISED October 23, 2022  
 REVISED March 29, 2023